

# COMMONWEALTH OF PENNSYLVANIA

## Board of Probation and Parole

### MONTHLY STATISTICAL REPORT

December 1999



**Tom Ridge**  
Governor

William F. Ward  
Chairman

Allen Castor  
Member

Benjamin Martinez  
Member

Barbara K. Descher  
Member

Nicholas P. Muller  
Member

Richard A. Kipp  
Member

Sean R. Ryan  
Member

Gary R. Lucht  
Member

Michael M. Webster  
Member

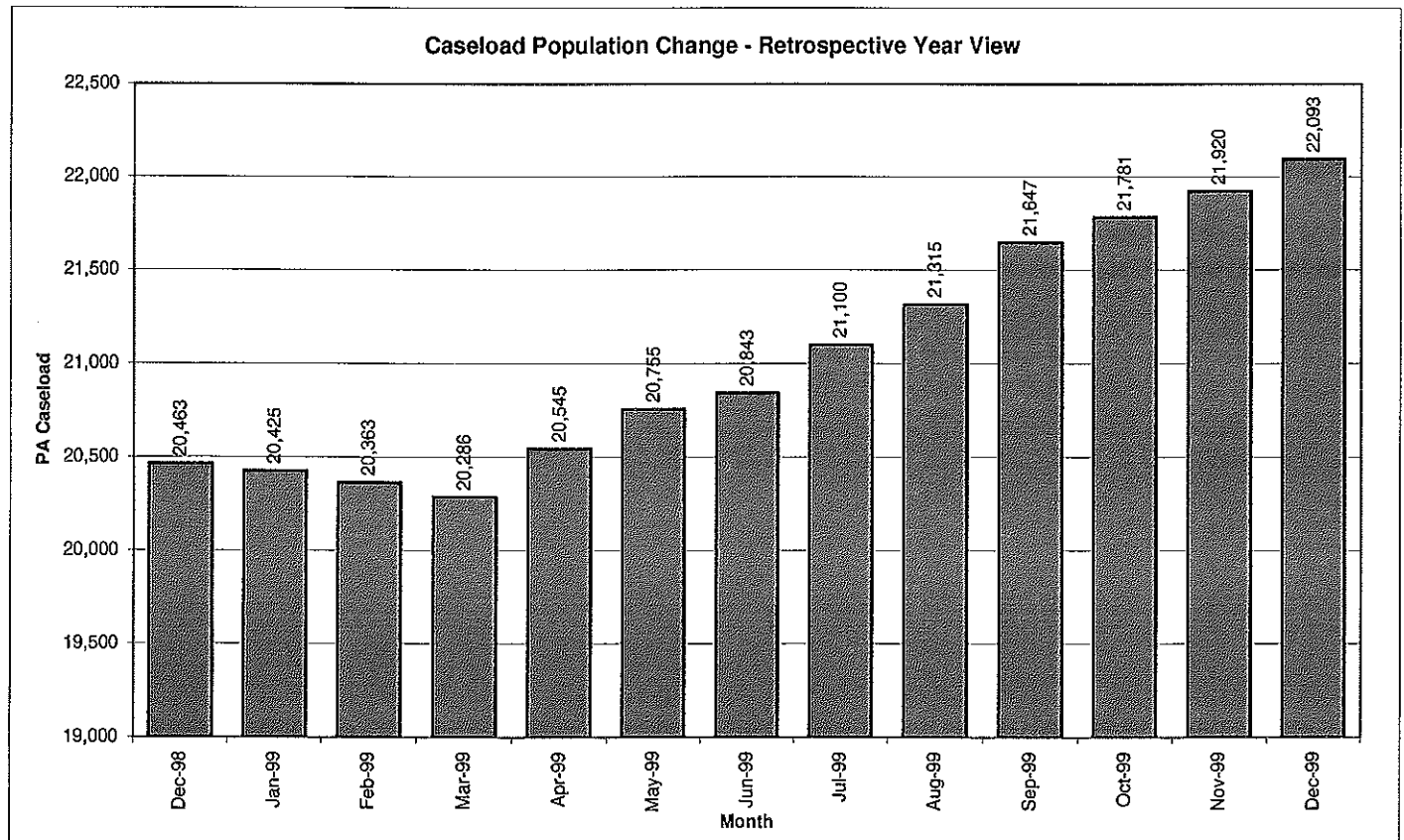
Mary A. Achilles  
Victim Advocate

pbpp  
AN EQUAL OPPORTUNITY EMPLOYER

**Table 1**  
**CASELOAD, WORKLOAD, AND POPULATION CHANGES BY DISTRICT**  
**December 1999**

Type of Cases	Beginning FY Cases 7/1/99	Current Month Cases	Fiscal YTD Index	Additions	Deletions		Number of Agents <sup>1</sup>	Average Caseload	Average Workload	Total Workload <sup>2</sup>
					Recommits/ Revocations	Other Deletions				
CHESTER	1,766	1,838	104	90	33	38	31	59	121	3,745
PHILADELPHIA	6,102	6,485	106	284	115	78	102	64	127	12,962
<b>EASTERN REGION</b>	<b>7,868</b>	<b>8,323</b>	<b>106</b>	<b>374</b>	<b>148</b>	<b>116</b>	<b>133</b>	<b>63</b>	<b>126</b>	<b>16,707</b>
ALLENTOWN	2,036	2,101	103	110	49	44	36	58	116	4,179
HARRISBURG	2,227	2,439	110	102	43	60	33	74	195	6,443
SCRANTON	913	1,005	110	37	14	17	14	72	167	2,345
WILLIAMSPORT	602	630	105	21	8	12	12	53	158	1,893
<b>CENTRAL REGION</b>	<b>5,778</b>	<b>6,175</b>	<b>107</b>	<b>270</b>	<b>114</b>	<b>133</b>	<b>95</b>	<b>65</b>	<b>156</b>	<b>14,860</b>
ALTOONA	686	776	113	28	11	23	14	55	153	2,140
MERCER	707	2,104	298	97	35	92	23	91	247	5,689
ERIE	2,244	829	37	52	11	26	15	55	115	1,721
PITTSBURGH	3,560	3,886	109	137	61	50	58	67	144	8,366
<b>WESTERN REGION</b>	<b>7,197</b>	<b>7,595</b>	<b>106</b>	<b>314</b>	<b>118</b>	<b>191</b>	<b>110</b>	<b>69</b>	<b>163</b>	<b>17,915</b>
<b>TOTAL CASES SUPERVISED</b>	<b>20,843</b>	<b>22,093</b>	<b>106</b>	<b>958</b>	<b>380</b>	<b>440</b>	<b>338</b>	<b>65</b>	<b>146</b>	<b>49,481</b>

Pa Cases in Other States	2,367	2,291	97	47	7	31
--------------------------	-------	-------	----	----	---	----



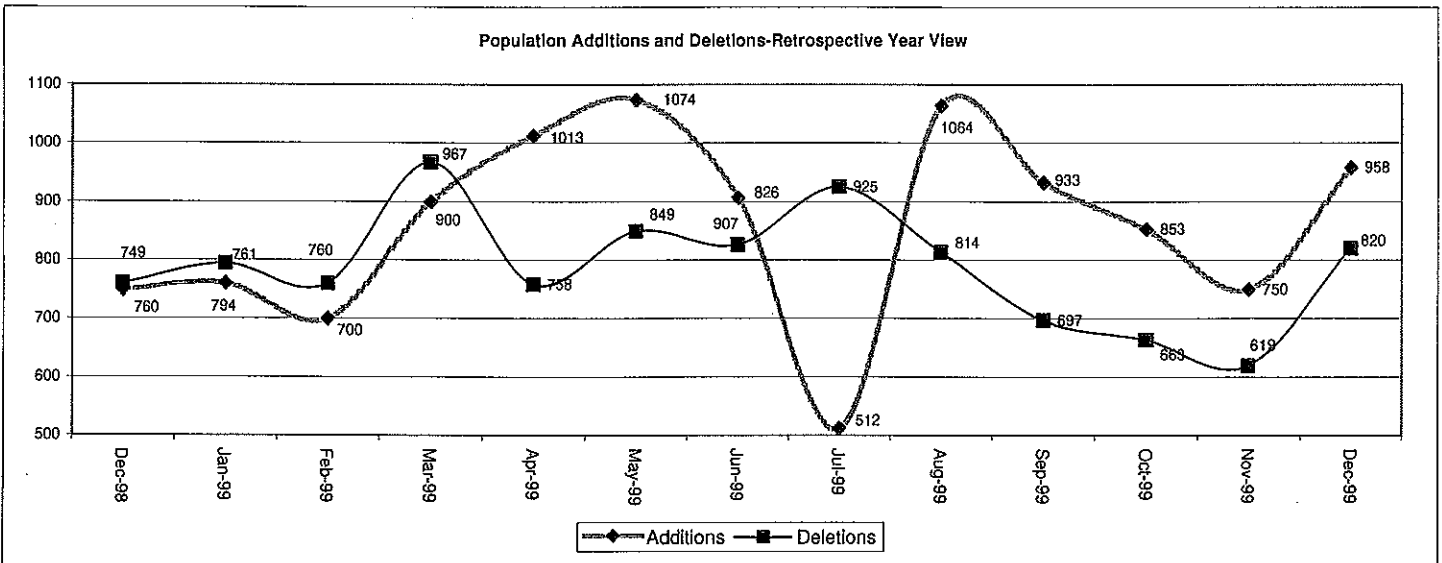
<sup>1</sup> Based upon filled positions

<sup>2</sup> Includes casework and investigation reports using geographic based workload formula

Table 2  
CASE ADDITIONS AND DELETIONS FOR SUPERVISED CASELOAD IN PENNSYLVANIA  
December 1999

Case Additions and Deletions	PAROLE*	REPAROLE	SPECIAL COUNTY PROBATION	SPECIAL COUNTY PAROLE	OTHER STATES' PAROLE	OTHER STATES' PROBATION	MONTHLY TOTAL	FISCAL YTD TOTAL
<b>ADDITIONS</b>	570	174	80	56	14	64	958	5,070
<b>DELETIONS-RECOMMITMENTS</b>								
<b>Convicted Parole Violator</b>								
State Corrections	58	21	0	0	0	0	79	374
County Corrections	8	2	5	2	0	0	17	109
Other States Cases	0	0	0	0	0	2	2	5
<b>Total Convicted Parole Violator</b>	66	23	5	2	0	2	98	488
<b>Technical Parole Violator</b>								
State Corrections	174	52	4	0	0	0	230	1,133
County Corrections	16	3	16	15	0	0	50	270
Other States Cases	0	0	0	0	0	2	2	10
<b>Total Technical Parole Violator</b>	190	55	20	15	0	2	282	1,413
<b>TOTAL RECOMMITMENTS</b>	256	78	25	17	0	4	380	1,901
Deletion Maximum Discharge	185	32	64	38	6	35	360	2,088
Deletion Death	8	1	0	1	1	0	11	72
Deletion Other	16	1	14	5	7	26	69	477
<b>TOTAL DELETIONS</b>	465	112	103	61	14	65	820	4,538

\*2 cases unclassified



**Table 3**  
**CASES BY ORIGINATING JURISDICTION**  
**BY REGION AND DISTRICT**  
**December 1999**

Region/District	PA Parole State Sentence				County		Other States		Total Cases
	from DOC	Boot Camp	Cnty Prisons	Subtotal	Spec Prob	Spec Parole	Parole	Probation	
Chester	1,203	40	183	1,426	114	7	33	258	1,838
Philadelphia	5,581	66	240	5,887	177	33	98	290	6,485
<b>Eastern Region</b>	<b>6,784</b>	<b>106</b>	<b>423</b>	<b>7,313</b>	<b>291</b>	<b>40</b>	<b>131</b>	<b>548</b>	<b>8,323</b>
Allentown	1,339	26	379	1,744	123	7	45	182	2,101
Harrisburg	1,779	97	201	2,077	82	13	58	209	2,439
Scranton	397	13	289	699	73	5	33	195	1,005
Williamsport	425	7	85	517	32	6	14	61	630
<b>Central Region</b>	<b>3,940</b>	<b>143</b>	<b>954</b>	<b>5,037</b>	<b>310</b>	<b>31</b>	<b>150</b>	<b>647</b>	<b>6,175</b>
Altoona	405	13	71	489	127	78	18	64	776
Mercer	430	5	31	466	837	741	17	43	2,104
Erie	552	15	52	619	98	43	15	54	829
Pittsburgh	2,468	74	106	2,648	848	111	60	219	3,886
<b>Western Region</b>	<b>3,855</b>	<b>107</b>	<b>260</b>	<b>4,222</b>	<b>1,910</b>	<b>973</b>	<b>110</b>	<b>380</b>	<b>7,595</b>
<b>Total Cases</b>	<b>14,579</b>	<b>356</b>	<b>1,637</b>	<b>16,572</b>	<b>2,511</b>	<b>1,044</b>	<b>391</b>	<b>1,575</b>	<b>22,093</b>
<b>Percent of Total</b>	<b>66%</b>	<b>2%</b>	<b>7%</b>	<b>75%</b>	<b>11%</b>	<b>5%</b>	<b>2%</b>	<b>7%</b>	<b>100%</b>

**Table 4**  
**CASES BY GRADE OF SUPERVISION**  
**BY REGION AND DISTRICT**  
**December 1999**

District/Region	Reporting						Non-Reporting		TOTAL CASES
	Enhanced	Maximum	Medium	Minimum	Not Classified	Subtotal	Absconder	Detainees	
Chester	161	497	394	294	29	1,375	100	363	1,838
Philadelphia	464	1,951	1,383	662	139	4,599	682	1204	6,485
<b>Eastern Region</b>	<b>625</b>	<b>2,448</b>	<b>1,777</b>	<b>956</b>	<b>168</b>	<b>5,974</b>	<b>782</b>	<b>1567</b>	<b>8,323</b>
Allentown	25	557	538	379	28	1,527	159	415	2,101
Harrisburg	54	777	601	440	49	1,921	103	415	2,439
Scranton	32	224	320	185	30	791	20	194	1,005
Williamsport	6	141	224	161	6	538	4	88	630
<b>Central Region</b>	<b>117</b>	<b>1,699</b>	<b>1,683</b>	<b>1,165</b>	<b>113</b>	<b>4,777</b>	<b>286</b>	<b>1112</b>	<b>6,175</b>
Altoona	24	210	252	130	15	631	22	123	776
Mercer	5	300	514	856	137	1,812	71	221	2,104
Erie	7	219	245	179	29	679	32	118	829
Pittsburgh	164	1,156	1,005	409	33	2,767	236	883	3,886
<b>Western Region</b>	<b>200</b>	<b>1,885</b>	<b>2,016</b>	<b>1,574</b>	<b>214</b>	<b>5,889</b>	<b>361</b>	<b>1345</b>	<b>7,595</b>
<b>Total Cases</b>	<b>942</b>	<b>6,032</b>	<b>5,476</b>	<b>3,695</b>	<b>495</b>	<b>16,640</b>	<b>1,429</b>	<b>4024</b>	<b>22,093</b>
<b>Percent of Total</b>	<b>4%</b>	<b>27%</b>	<b>25%</b>	<b>17%</b>	<b>2%</b>	<b>75%</b>	<b>6%</b>	<b>18%</b>	<b>100%</b>

**TABLE 5**  
**CASES BY SEX AND RACE**  
**BY REGION AND DISTRICT**  
**DECEMBER 1999**

District/Region	Male			Female			Percent Male	Percent Female	TOTAL CASES
	White	Non-White	Total	White	Non-White	Total			
CHESTER	728	986	1,714	69	55	124	93%	7%	1,838
PHILADELPHIA	909	5,172	6,081	70	334	404	94%	6%	6,485
<b>EASTERN REGION</b>	<b>1,637</b>	<b>6,158</b>	<b>7,795</b>	<b>139</b>	<b>389</b>	<b>528</b>	<b>94%</b>	<b>6%</b>	<b>8,323</b>
ALLENTOWN	969	916	1,885	117	99	216	90%	10%	2,101
HARRISBURG	1,112	1,092	2,204	129	106	235	90%	10%	2,439
SCRANTON	748	131	879	108	18	126	87%	13%	1,005
WILLIAMSPORT	461	52	513	95	22	117	81%	19%	630
<b>CENTRAL REGION</b>	<b>3,290</b>	<b>2,191</b>	<b>5,481</b>	<b>449</b>	<b>245</b>	<b>694</b>	<b>89%</b>	<b>11%</b>	<b>6,175</b>
ALTOONA	617	70	687	81	8	89	89%	11%	776
MERCER	1,450	292	1,742	289	73	362	83%	17%	2,104
ERIE	496	239	735	59	35	94	89%	11%	829
PITTSBURGH	1,596	1,885	3,481	186	219	405	90%	10%	3,886
<b>WESTERN REGION</b>	<b>4,159</b>	<b>2,486</b>	<b>6,645</b>	<b>615</b>	<b>335</b>	<b>950</b>	<b>87%</b>	<b>13%</b>	<b>7,595</b>
<b>TOTAL CASES</b>	<b>9,086</b>	<b>10,835</b>	<b>19,921</b>	<b>1,203</b>	<b>969</b>	<b>2,172</b>	<b>90%</b>	<b>10%</b>	<b>22,093</b>

**TABLE 6**  
**CASES BY EMPLOYMENT STATUS**  
**BY REGION AND DISTRICT**  
**DECEMBER 1999**

District/Region	Employed	Unemployed	Unemployment Rate	Unable to Work	Unknown	Non-Reporting	Total
CHESTER	733	400	35%	78	162	465	1,838
PHILADELPHIA	2,183	1,690	35%	243	438	1,931	6,485
<b>EASTERN REGION</b>	<b>2,916</b>	<b>2,090</b>	<b>35%</b>	<b>321</b>	<b>600</b>	<b>2,396</b>	<b>8,323</b>
ALLENTOWN	740	313	35%	243	217	588	2,101
HARRISBURG	1,160	481	35%	172	87	539	2,439
SCRANTON	471	212	35%	83	20	219	1,005
WILLIAMSPORT	324	90	35%	63	59	94	630
<b>CENTRAL REGION</b>	<b>2,695</b>	<b>1,096</b>	<b>35%</b>	<b>561</b>	<b>383</b>	<b>1,440</b>	<b>6,175</b>
ALTOONA	314	81	35%	78	155	148	776
MERCER	856	520	35%	174	241	313	2,104
ERIE	334	135	35%	63	135	162	829
PITTSBURGH	1,415	1,052	35%	284	9	1,126	3,886
<b>WESTERN REGION</b>	<b>2,919</b>	<b>1,788</b>	<b>35%</b>	<b>599</b>	<b>540</b>	<b>1,749</b>	<b>7,595</b>
<b>TOTAL CASES</b>	<b>8,530</b>	<b>4,974</b>	<b>35%</b>	<b>1,481</b>	<b>1,523</b>	<b>5,585</b>	<b>22,093</b>

Table 7  
**BOARD DECISIONS**  
 December 1999

Type of Decision	Total
Parole to Street	518
Parole to Detainer	56
Parole Refused	684
Total Considered	1,258
Percent Granted	46%
Recommitments	156
Refer to Prior Action	43
Assigned by Courts	340
Other Decisions	557
<b>Total Decisions</b>	<b>2,354</b>

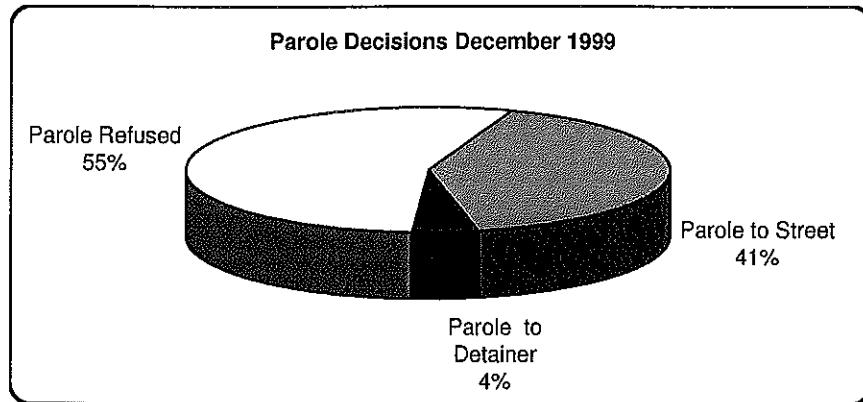


Table 8  
**HEARINGS AND INTERVIEWS**  
 December 1999

Type	Board Members	Hearing Examiners	Total
<b>HEARINGS</b>			
Preliminary	0	34	34
Preliminary/Detention	0	24	24
Violation	0	208	208
Violation/Detention	0	41	41
Detention	0	27	27
Revocation	0	52	52
Revocation/Violation	0	8	8
Probable Cause Out-of State	0	14	14
Panel	32	0	32
<b>Total Hearings</b>	<b>32</b>	<b>408</b>	<b>440</b>
<b>INTERVIEWS</b>			
Parole/Minimum	313	645	958
Reparole/Review	523	734	1257
Victim Input	0	25	25
<b>Total Interviews</b>	<b>836</b>	<b>1,404</b>	<b>2,240</b>

Table 9  
**MONTHLY PAROLING DECISIONS**  
 December 1999

MONTH/YEAR	PAROLE GRANTED	PAROLE REFUSED	TOTAL CONSIDERED	% GRANTED
Dec-98	697	787	1,484	47%
Jan-99	406	647	1,053	39%
Feb-99	878	1,007	1,885	47%
Mar-99	1,366	1,221	2,587	53%
Apr-99	703	736	1,439	49%
May-99	851	780	1,631	52%
Jun-99	583	616	1,199	49%
Jul-99	610	699	1,309	47%
Aug-99	808	781	1,589	51%
Sep-99	625	774	1,399	45%
Oct-99	811	864	1,675	48%
Nov-99	778	818	1,596	49%
Dec-99	574	684	1,258	46%
Monthly Avg Prior 12 Mo	749	802	1,552	48%

