

COMMONWEALTH OF PENNSYLVANIA

Board of Probation and Parole

MONTHLY PROGRAM REPORT

September 2006



Edward G. Rendell
Governor

Catherine C. McVey
Chairman

Michael L. Green
Member

Jeffrey R. Imboden
Member

Matthew T. Mangino, Esq
Member

Benjamin A. Martinez
Member

Gerard N. Massaro, Ph.D.
Member

Michael M. Webster
Member

Lloyd A. White
Member

Carol Lavery
Victim Advocate

PBPP
AN EQUAL OPPORTUNITY EMPLOYER

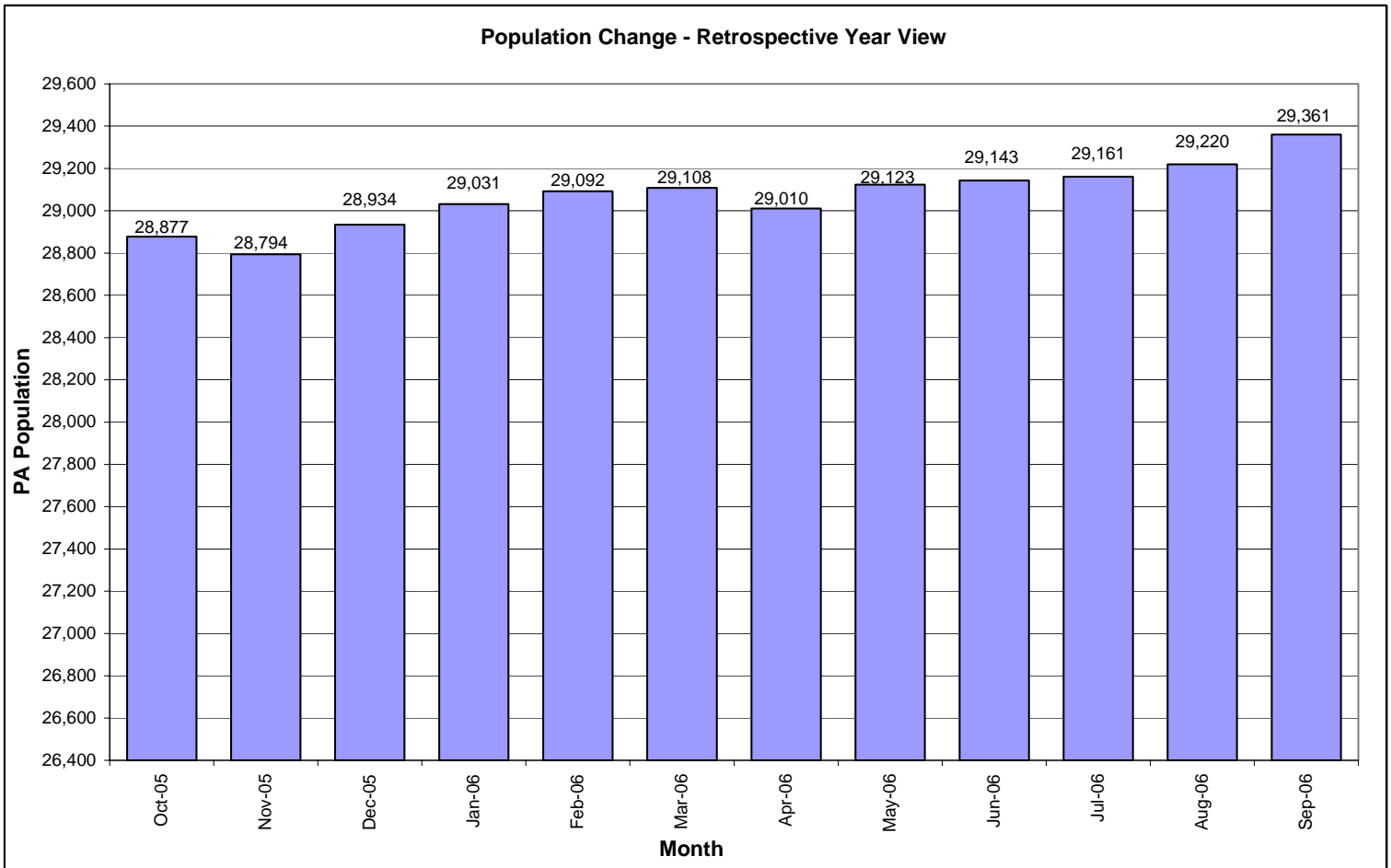
**Table 1
WORKLOAD AND POPULATION CHANGES BY REGION / DISTRICT
September 2006**

REGION / DISTRICT	Beginning Fiscal Yr ¹ July 2006	Current Month Population	Fiscal YTD Index	Additions	Deletions		Number of Agents ²	Average Workload	Total Workload
					Recommits/ Revocations	Other Deletions			
CHESTER	2,303	2,302	100	76	27	59	32	130	4,144
PHILADELPHIA	8,845	8,826	100	265	92	189	114	134	15,268
EASTERN REGION	11,148	11,128	100	341	119	248	146	133	19,412
ALLENTOWN	3,265	3,307	101	116	25	85	40	145	5,796
HARRISBURG	3,737	3,809	102	165	42	93	49	143	6,984
SCRANTON	1,558	1,574	101	68	19	30	22	134	2,945
WILLIAMSPORT	827	813	98	35	6	24	14	116	1,618
CENTRAL REGION	9,387	9,503	101	384	92	232	125	139	17,343
ALTOONA	1,075	1,109	103	39	11	15	16	139	2,230
MERCER	2,446	2,469	101	140	31	73	37	131	4,842
ERIE	1,246	1,263	101	55	18	19	17	140	2,384
PITTSBURGH	3,859	3,889	101	127	35	60	59	120	7,107
WESTERN REGION	8,626	8,730	101	361	95	167	129	128	16,563
TOTAL Supervised	29,161	29,361	101	1,086	306	647	400	133	53,319

¹ effective June 30

² Filled agent positions

PA Offenders in Other States	2,723	2,753	101	37	33	5
-------------------------------------	--------------	--------------	------------	-----------	-----------	----------



**Table 2
SUPERVISED POPULATION ADDITIONS AND DELETIONS
September 2006**

Population Additions and Deletions	Parole	ReParole	Special County Probation	Special County Parole	Other States' Parole	Other States' Probation	Monthly Total	Fiscal YTD Total
ADDITIONS	538	186	158	67	21	116	1,086	3,418
DELETIONS-RECOMMITMENTS								
<i>Convicted Parole Violator</i>								
State Corrections	57	15	4	0	0	0	76	319
County Corrections	10	2	13	4	0	0	29	85
Other States	0	0	0	0	0	1	1	8
Total Convicted Parole Violator	67	17	17	4	0	1	106	412
<i>Technical Parole Violator</i>								
State Corrections	117	34	1	0	0	0	152	577
County Corrections	6	4	23	13	0	0	46	162
Other States	0	0	0	0	0	2	2	7
Total Technical Parole Violator	123	38	24	13	0	2	200	746
TOTAL RECOMMITMENTS	190	55	41	17	0	3	306	1,158
Deletion Maximum Discharge	260	74	68	24	13	58	497	1,541
Deletion Death	13	2	1	0	0	2	18	69
Deletion Other	9	4	32	6	12	69	132	424
TOTAL DELETIONS	472	135	142	47	25	132	953	3,192

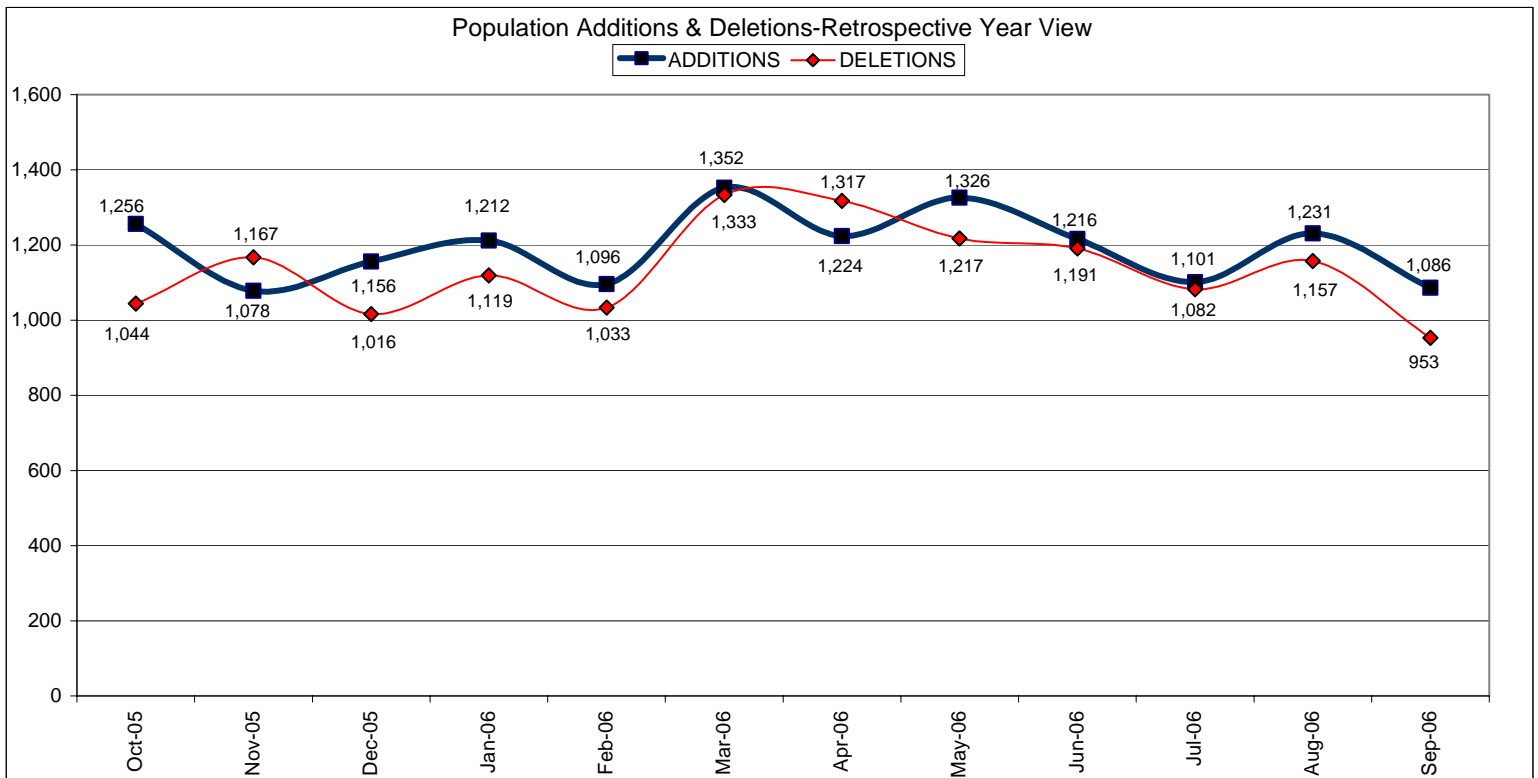


Table 3
SUPERVISED POPULATION BY ORIGINATING JURISDICTION and REGION / DISTRICT
September 2006

Region / District	PA Parole State Sentence				County		Other States		Total Population
	State Prisons	Boot Camp	County Prisons	Subtotal	Special Probation	Special Parole	Parole	Probation	
Chester	1,394	90	231	1,715	247	2	52	286	2,302
Philadelphia	6,831	228	359	7,418	703	3	114	588	8,826
Eastern Region	8,225	318	590	9,133	950	5	166	874	11,128
Allentown	2,111	121	366	2,598	248	6	66	389	3,307
Harrisburg	2,707	202	201	3,110	297	3	60	339	3,809
Scranton	834	32	234	1,100	84	4	65	321	1,574
Williamsport	508	24	63	595	102	10	15	91	813
Central Region	6,160	379	864	7,403	731	23	206	1,140	9,503
Altoona	686	29	83	798	187	20	17	87	1,109
Mercer	545	13	19	577	1,157	664	9	62	2,469
Erie	870	30	48	948	192	40	23	60	1,263
Pittsburgh	2,628	198	75	2,901	638	52	64	234	3,889
Western Region	4,729	270	225	5,224	2,174	776	113	443	8,730
Total	19,114	967	1,679	21,760	3,855	804	485	2,457	29,361
Percent of Total	65%	3%	6%	74%	13%	3%	2%	8%	100%

Table 4
SUPERVISED POPULATION BY GRADE OF SUPERVISION and REGION / DISTRICT
September 2006

Region / District	Reporting						Non-Reporting		Total Population
	Enhanced	Maximum	Medium	Minimum	Not Classified	Subtotal	Absconder	Detainees	
Chester	12	568	519	589	13	1,701	76	525	2,302
Philadelphia	49	2,530	1,443	1,895	33	5,950	753	2,123	8,826
Eastern Region	61	3,098	1,962	2,484	46	7,651	829	2,648	11,128
Allentown	11	689	629	952	2	2,283	233	791	3,307
Harrisburg	23	815	612	1,340	9	2,799	179	831	3,809
Scranton	12	219	331	688	1	1,251	36	287	1,574
Williamsport	2	73	158	464	1	698	5	110	813
Central Region	48	1,796	1,730	3,444	13	7,031	453	2,019	9,503
Altoona	20	195	278	393	0	886	32	191	1,109
Mercer	5	251	605	1,188	2	2,051	94	324	2,469
Erie	8	216	262	468	2	956	37	270	1,263
Pittsburgh	55	882	832	1,046	16	2,831	146	912	3,889
Western Region	88	1,544	1,977	3,095	20	6,724	309	1,697	8,730
Total	197	6,438	5,669	9,023	79	21,406	1,591	6,364	29,361
Percent of Total	1%	22%	19%	31%	0%	73%	5%	22%	100%

Table 5
SUPERVISED POPULATION BY GENDER, RACE and REGION / DISTRICT
September 2006

Region / District	Male			Female			Percent Male	Percent Female	Total Population
	White	Non White	Total	White	Non White	Total			
Chester	868	1,273	2,141	101	60	161	93%	7%	2,302
Philadelphia	995	7,277	8,272	114	440	554	94%	6%	8,826
EASTERN REGION	1,863	8,550	10,413	215	500	715	94%	6%	11,128
Allentown	1,332	1,628	2,960	206	141	347	90%	10%	3,307
Harrisburg	1,672	1,704	3,376	266	167	433	89%	11%	3,809
Scranton	1,082	301	1,383	167	24	191	88%	12%	1,574
Williamsport	589	74	663	130	20	150	82%	18%	813
CENTRAL REGION	4,675	3,707	8,382	769	352	1,121	88%	12%	9,503
Altoona	855	127	982	113	14	127	89%	11%	1,109
Mercer	1,601	355	1,956	432	81	513	79%	21%	2,469
Erie	694	389	1,083	133	47	180	86%	14%	1,263
Pittsburgh	1,619	1,906	3,525	228	136	364	91%	9%	3,889
WESTERN REGION	4,769	2,777	7,546	906	278	1,184	86%	14%	8,730
TOTAL	11,307	15,034	26,341	1,890	1,130	3,020	90%	10%	29,361

Table 6
SUPERVISED POPULATION BY EMPLOYMENT STATUS and REGION / DISTRICT
September 2006

Region / District	Employed	Unemployed	Unemployment Rate	Unable to Work	Unknown	Non Reporting	Total Population
Chester	962	490	34%	241	8	601	2,302
Philadelphia	3,046	2,016	40%	875	13	2,876	8,826
EASTERN REGION	4,008	2,506	38%	1,116	21	3,477	11,128
Allentown	1,129	734	39%	420	0	1,024	3,307
Harrisburg	1,733	750	30%	313	3	1,010	3,809
Scranton	701	352	33%	194	4	323	1,574
Williamsport	440	181	29%	77	0	115	813
CENTRAL REGION	4,003	2,017	34%	1,004	7	2,472	9,503
Altoona	554	152	22%	180	0	223	1,109
Mercer	1,064	557	34%	430	0	418	2,469
Erie	558	223	29%	174	1	307	1,263
Pittsburgh	1,636	470	22%	723	2	1,058	3,889
WESTERN REGION	3,812	1,402	27%	1,507	3	2,006	8,730
TOTAL	11,823	5,925	33%	3,627	31	7,955	29,361

**Table 7
BOARD DECISIONS
September 2006**

Type of Decision		Total
Parole / Reparole to Street		898
Parole / Reparole to Detainer		97
Refused		718
Total Considered		1,713
Percent Granted		58%
Recommitments		539
Refer to Prior Action		157
Assigned by Courts		458
Other Decisions		728
Total Decisions		3,595

Parole / Reparole Decisions September 2006

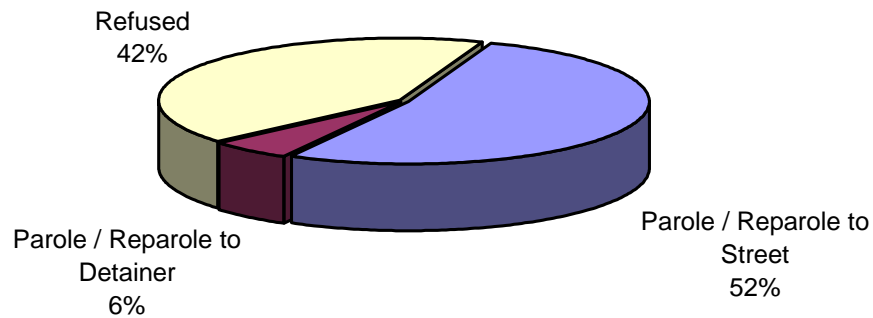
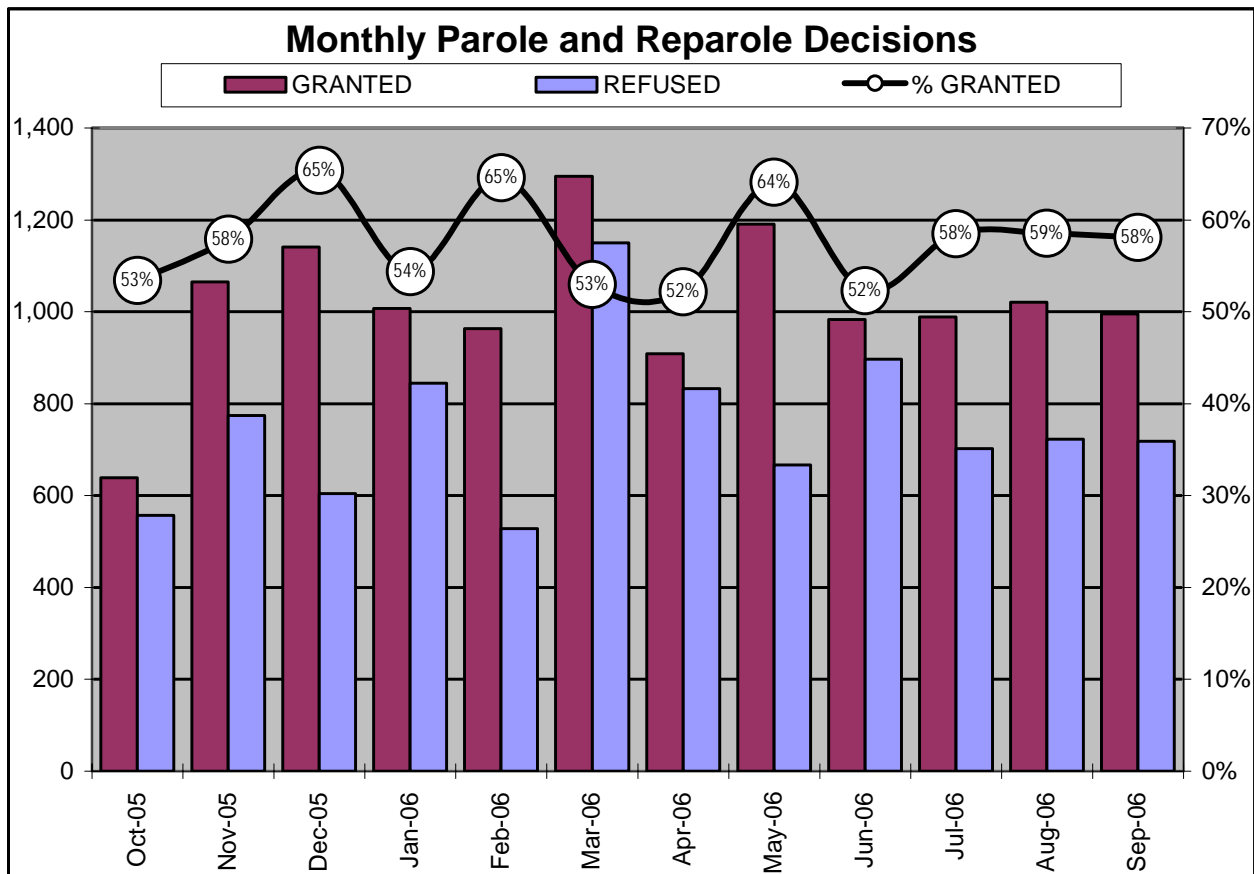


Table 8
MONTHLY PAROLE and REPAROLE DECISIONS
September 2006

MONTH/YEAR	GRANTED	REFUSED	CONSIDERED	% GRANTED
Oct-05	639	557	1,196	53%
Nov-05	1,065	774	1,839	58%
Dec-05	1,141	604	1,745	65%
Jan-06	1,007	845	1,852	54%
Feb-06	963	528	1,491	65%
Mar-06	1,295	1,150	2,445	53%
Apr-06	909	833	1,742	52%
May-06	1,191	667	1,858	64%
Jun-06	983	897	1,880	52%
Jul-06	989	702	1,691	58%
Aug-06	1,021	723	1,744	59%
Sep-06	995	718	1,713	58%
Monthly Avg Prior 12 Mo	1,017	750	1,766	58%



PBPP Population Breakdown By Place of Incarceration/Jurisdiction – September 2006

Monthly Count of Board Actions							
Type of Decision	Non-SCI			SCI			Total Board Actions
	Parole	Refuse	Total	Parole	Refuse	Total	
January 2006	78	44	122	929	801	1,730	1,852
February 2006	76	34	110	887	494	1,381	1,491
March 2006	98	62	160	1,197	1,088	2,285	2,445
April 2006	88	51	139	822	781	1,603	1,742
May 2006	102	42	144	1,089	625	1,714	1,858
June 2006	81	56	137	902	841	1,743	1,880
July 2006	73	24	97	916	678	1,594	1,691
August 2006	86	44	130	935	679	1,614	1,744
September 2006	84	38	122	911	680	1,591	1,713
2006 Total	766	395	1,161	8,588	6,667	15,255	16,416

Offender Status - September 2006					
Status	State Prison	County Prison	County Sentence	Other States Cases	Total
Supervision	13,792	1,229	3,660	2,725	21,406
Absconder	1,298	74	217	2	1,591
Detention	4,991	376	782	215	6,364
Total	20,081	1,679	4,659	2,942	29,361

PBPP Monthly Population Profile							
Offender Status	Apr 06	May 06	Jun 06	Jul 06	Aug 06	Sep 06	
State sentence from state institution	19,903	19,950	19,898	19,950	20,002	20,081	
<i>Supervision</i>	14,002	14,003	13,977	13,934	13,844	13,792	
<i>Absconder</i>	1,316	1,315	1,311	1,342	1,326	1,298	
<i>Detention</i>	4,585	4,632	4,610	4,674	4,832	4,991	
State sentence from County Prison	1,656	1,673	1,679	1,673	1,674	1,679	
<i>Supervision</i>	1,240	1,244	1,246	1,224	1,219	1,229	
<i>Absconder</i>	78	75	76	81	76	74	
<i>Detention</i>	338	354	357	368	379	376	
County sentence Prob & Parole	4,521	4,562	4,577	4,565	4,586	4,659	
<i>Supervision</i>	3,599	3,616	3,638	3,613	3,602	3,660	
<i>Absconder</i>	210	210	203	204	205	217	
<i>Detention</i>	712	736	736	748	779	782	
Other state's sentence Prob & Parole	2,930	2,938	2,989	2,973	2,958	2,942	
<i>Supervision</i>	2,745	2,751	2,789	2,767	2,741	2,725	
<i>Absconder</i>	1	1	2	2	2	2	
<i>Detention</i>	184	186	198	204	215	215	
PBPP Population end of month	29,010	29,123	29,143	29,161	29,220	29,361	

PBPP Population Breakdown By Place of Incarceration/Jurisdiction – September 2006

Additions and Deletions						
	Apr 05	May 06	Jun 06	Jul 06	Aug 06	Sep 06
Total Additions	1,224	1,326	1,216	1,101	1,231	1,086
State sentence - SCI	762	866	759	727	751	651
State sentence - Cnty Prison	75	90	81	57	82	73
County sentence Prob & Parole	202	213	191	196	238	225
Other state's sentence	185	157	185	121	160	137
Total Deletions	1,317	1,217	1,191	1,082	1,157	953
State sentence - SCI	879	760	750	648	652	539
<i>Technical Violator</i>	408	284	314	206	210	149
<i>Convicted Violator</i>	208	153	137	129	110	72
<i>Maximum Expiration</i>	242	288	266	287	299	291
<i>Other Case Closure</i>	21	35	33	26	33	27
State sentence - Cnty Prison	58	73	59	54	74	68
<i>Technical Violator</i>	20	18	19	11	13	12
<i>Convicted Violator</i>	10	13	10	6	6	12
<i>Maximum Expiration</i>	26	37	29	35	51	43
<i>Other Case Closure</i>	2	5	1	2	4	1
County sentence Prob & Parole	221	226	237	242	256	189
<i>Technical Violator</i>	38	38	43	52	50	37
<i>Convicted Violator</i>	28	20	18	22	27	21
<i>Maximum Expiration</i>	103	116	127	122	129	92
<i>Other Case Closure</i>	52	52	49	46	50	39
Other state's sentence	159	158	145	148	175	157
<i>Technical Violator</i>	1	2	0	3	1	2
<i>Convicted Violator</i>	6	5	1	2	5	1
<i>Maximum Expiration</i>	60	66	59	57	64	71
<i>Other Case Closure</i>	92	85	85	76	105	83
PBPP Population end of month	29,010	29,123	29,143	29,161	29,220	29,361