

# COMMONWEALTH OF PENNSYLVANIA

## Board of Probation and Parole

### MONTHLY PROGRAM REPORT

September 2005



**Edward G. Rendell**  
Governor

Catherine C. McVey  
Chairman

Allen Castor  
Member

Michael L. Green  
Member

Jeffrey R. Imboden  
Member

Benjamin Martinez  
Member

Gerard N. Massaro, Ph.D.  
Member

Sean R. Ryan  
Member

Michael M. Webster  
Member

Lloyd A. White  
Member

Victim Advocate

pbpp  
AN EQUAL OPPORTUNITY EMPLOYER

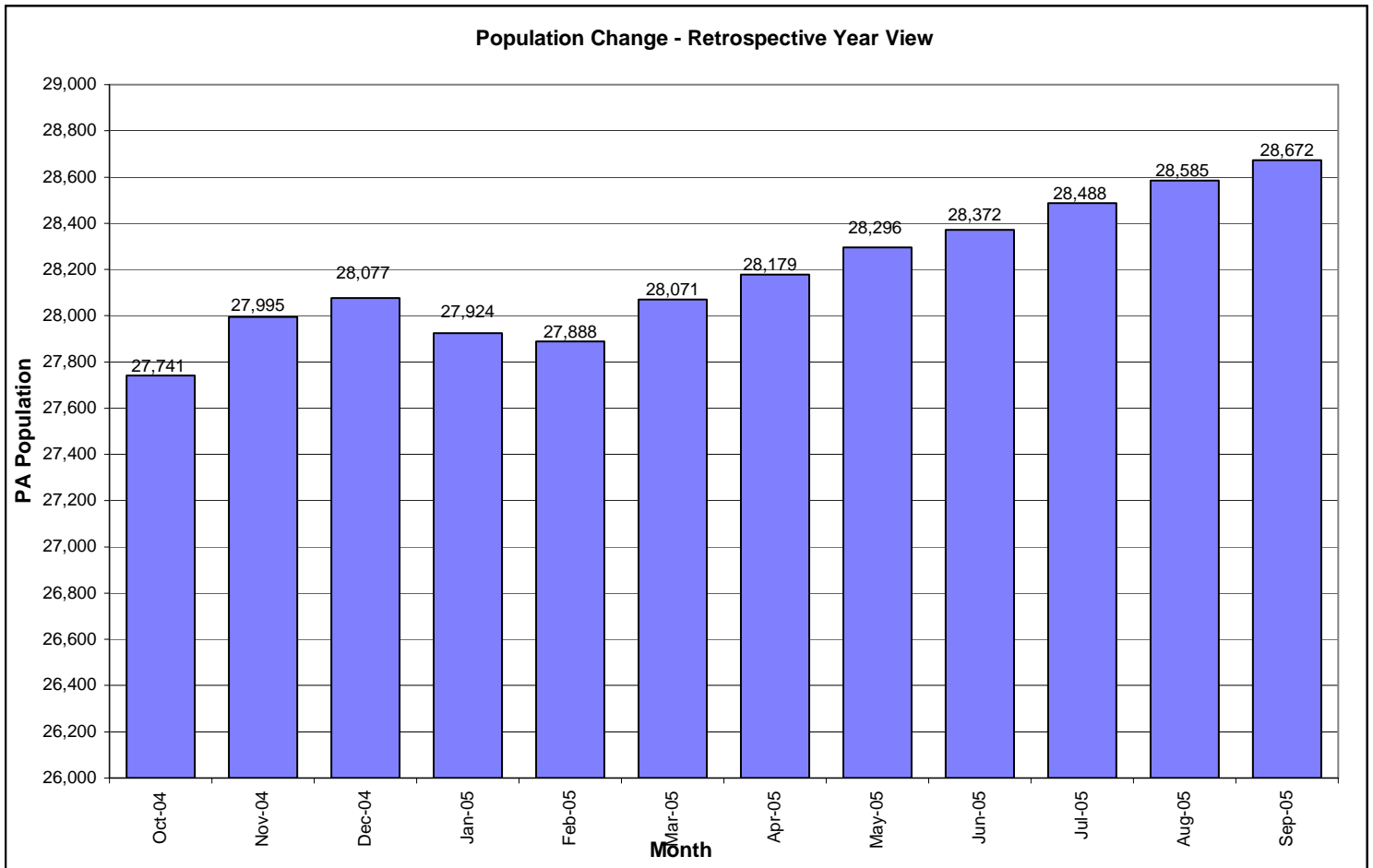
**Table 1  
WORKLOAD AND POPULATION CHANGES BY REGION / DISTRICT  
September 2005**

REGION / DISTRICT	Beginning Fiscal Yr <sup>1</sup> July 2005	Current Month Population	Fiscal YTD Index	Additions	Deletions		Number of Agents <sup>2</sup>	Average Workload	Total Workload
					Recommits/ Revocations	Other Deletions			
CHESTER	2,366	2,341	99	72	61	59	33	135	4,459
PHILADELPHIA	8,674	8,784	101	324	147	138	109	141	15,369
<b>EASTERN REGION</b>	<b>11,040</b>	<b>11,125</b>	<b>101</b>	<b>396</b>	<b>208</b>	<b>197</b>	<b>142</b>	<b>140</b>	<b>19,828</b>
ALLENTOWN	3,017	3,075	102	140	76	75	40	134	5,343
HARRISBURG	3,669	3,718	101	188	47	67	48	136	6,519
SCRANTON	1,444	1,474	102	81	25	39	22	128	2,805
WILLIAMSPORT	830	830	100	21	15	19	14	112	1,569
<b>CENTRAL REGION</b>	<b>8,960</b>	<b>9,097</b>	<b>102</b>	<b>430</b>	<b>163</b>	<b>200</b>	<b>124</b>	<b>131</b>	<b>16,236</b>
ALTOONA	1,044	1,027	98	30	24	22	16	139	2,229
MERCER	2,369	2,411	102	166	53	97	36	128	4,596
ERIE	1,135	1,152	101	52	23	21	18	115	2,061
PITTSBURGH	3,824	3,860	101	166	62	81	60	122	7,298
<b>WESTERN REGION</b>	<b>8,372</b>	<b>8,450</b>	<b>101</b>	<b>414</b>	<b>162</b>	<b>221</b>	<b>130</b>	<b>124</b>	<b>16,183</b>
<b>TOTAL Supervised</b>	<b>28,372</b>	<b>28,672</b>	<b>101</b>	<b>1,240</b>	<b>533</b>	<b>618</b>	<b>396</b>	<b>132</b>	<b>52,247</b>

<sup>1</sup> effective June 30

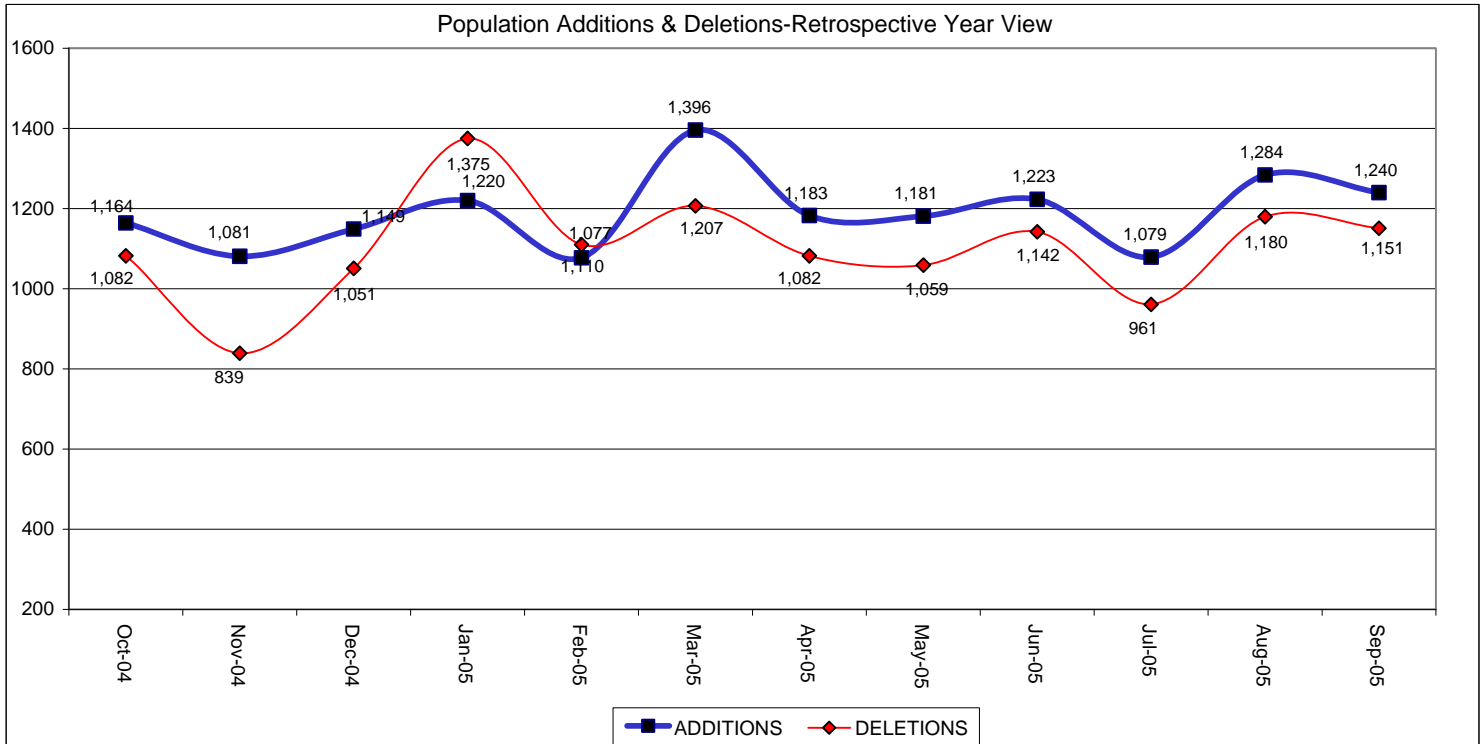
<sup>2</sup> Filled agent positions

PA Offenders in Other States	<b>2,659</b>	<b>2,707</b>	<b>102</b>	<b>48</b>	<b>6</b>	<b>16</b>
------------------------------	--------------	--------------	------------	-----------	----------	-----------



**Table 2  
SUPERVISED POPULATION ADDITIONS AND DELETIONS  
September 2005**

Population Additions and Deletions	Parole	ReParole	Special County Probation	Special County Parole	Other States' Parole	Other States' Probation	Monthly Total	Fiscal YTD Total
<b>ADDITIONS</b>	642	196	167	70	29	136	1,240	3,603
<b>DELETIONS-RECOMMITMENTS</b>								
<i>Convicted Parole Violator</i>								
State Corrections	106	29	9	0	0	0	144	354
County Corrections	8	1	13	7	0	0	29	67
Other States	0	0	0	0	0	2	2	4
<b>Total Convicted Parole Violator</b>	114	30	22	7	0	2	175	425
<i>Technical Parole Violator</i>								0
State Corrections	204	85	6	0	0	0	295	819
County Corrections	14	5	28	15	0	0	62	174
Other States	0	0	0	0	0	1	1	6
<b>Total Technical Parole Violator</b>	218	90	34	15	0	1	358	999
<b>TOTAL RECOMMITMENTS</b>	332	120	56	22	0	3	533	1,424
Deletion Maximum Discharge	214	59	72	36	9	48	438	1,323
Deletion Death	20	5	6	0	1	1	33	68
Deletion Other	8	5	34	5	15	80	147	477
<b>TOTAL DELETIONS</b>	574	189	168	63	25	132	1,151	3,292



**Table 3**  
**SUPERVISED POPULATION BY ORIGINATING JURISDICTION and REGION / DISTRICT**  
**September 2005**

Region / District	PA Parole State Sentence				County		Other States		Total Population
	State Prisons	Boot Camp	County Prisons	Subtotal	Special Probation	Special Parole	Parole	Probation	
Chester	1,396	101	226	1,723	250	5	51	312	2,341
Philadelphia	6,913	263	372	7,548	610	3	126	497	8,784
<b>Eastern Region</b>	<b>8,309</b>	<b>364</b>	<b>598</b>	<b>9,271</b>	<b>860</b>	<b>8</b>	<b>177</b>	<b>809</b>	<b>11,125</b>
Allentown	1,964	122	335	2,421	220	7	55	372	3,075
Harrisburg	2,643	225	222	3,090	262	8	62	296	3,718
Scranton	773	26	219	1,018	86	2	54	314	1,474
Williamsport	541	27	60	628	86	5	19	92	830
<b>Central Region</b>	<b>5,921</b>	<b>400</b>	<b>836</b>	<b>7,157</b>	<b>654</b>	<b>22</b>	<b>190</b>	<b>1,074</b>	<b>9,097</b>
Altoona	633	22	78	733	150	28	19	97	1,027
Mercer	502	7	21	530	1,145	659	12	65	2,411
Erie	786	37	40	863	166	44	19	60	1,152
Pittsburgh	2,613	203	53	2,869	647	42	70	232	3,860
<b>Western Region</b>	<b>4,534</b>	<b>269</b>	<b>192</b>	<b>4,995</b>	<b>2,108</b>	<b>773</b>	<b>120</b>	<b>454</b>	<b>8,450</b>
<b>Total</b>	<b>18,764</b>	<b>1,033</b>	<b>1,626</b>	<b>21,423</b>	<b>3,622</b>	<b>803</b>	<b>487</b>	<b>2,337</b>	<b>28,672</b>
<b>Percent of Total</b>	<b>65%</b>	<b>4%</b>	<b>6%</b>	<b>75%</b>	<b>13%</b>	<b>3%</b>	<b>2%</b>	<b>8%</b>	<b>100%</b>

**Table 4**  
**SUPERVISED POPULATION BY GRADE OF SUPERVISION and REGION / DISTRICT**  
**September 2005**

Region / District	Reporting						Non-Reporting		Total Population
	Enhanced	Maximum	Medium	Minimum	Not Classified	Subtotal	Absconder	Detainees	
Chester	79	753	491	368	17	1,708	113	520	2,341
Philadelphia	82	2,739	1,712	1,252	127	5,912	811	2,061	8,784
<b>Eastern Region</b>	<b>161</b>	<b>3,492</b>	<b>2,203</b>	<b>1,620</b>	<b>144</b>	<b>7,620</b>	<b>924</b>	<b>2,581</b>	<b>11,125</b>
Allentown	2	631	724	861	0	2,218	205	652	3,075
Harrisburg	13	704	672	1,241	47	2,677	191	850	3,718
Scranton	13	217	346	589	4	1,169	35	270	1,474
Williamsport	1	85	177	442	6	711	9	110	830
<b>Central Region</b>	<b>29</b>	<b>1,637</b>	<b>1,919</b>	<b>3,133</b>	<b>57</b>	<b>6,775</b>	<b>440</b>	<b>1,882</b>	<b>9,097</b>
Altoona	0	176	257	374	0	807	38	182	1,027
Mercer	3	260	664	1,107	5	2,039	89	283	2,411
Erie	8	192	209	434	23	866	34	252	1,152
Pittsburgh	32	1,037	812	946	17	2,844	179	837	3,860
<b>Western Region</b>	<b>43</b>	<b>1,665</b>	<b>1,942</b>	<b>2,861</b>	<b>45</b>	<b>6,556</b>	<b>340</b>	<b>1,554</b>	<b>8,450</b>
<b>Total</b>	<b>233</b>	<b>6,794</b>	<b>6,064</b>	<b>7,614</b>	<b>246</b>	<b>20,951</b>	<b>1,704</b>	<b>6,017</b>	<b>28,672</b>
<b>Percent of Total</b>	<b>1%</b>	<b>24%</b>	<b>21%</b>	<b>27%</b>	<b>1%</b>	<b>73%</b>	<b>6%</b>	<b>21%</b>	<b>100%</b>

**Table 5**  
**SUPERVISED POPULATION BY GENDER, RACE and REGION / DISTRICT**  
**September 2005**

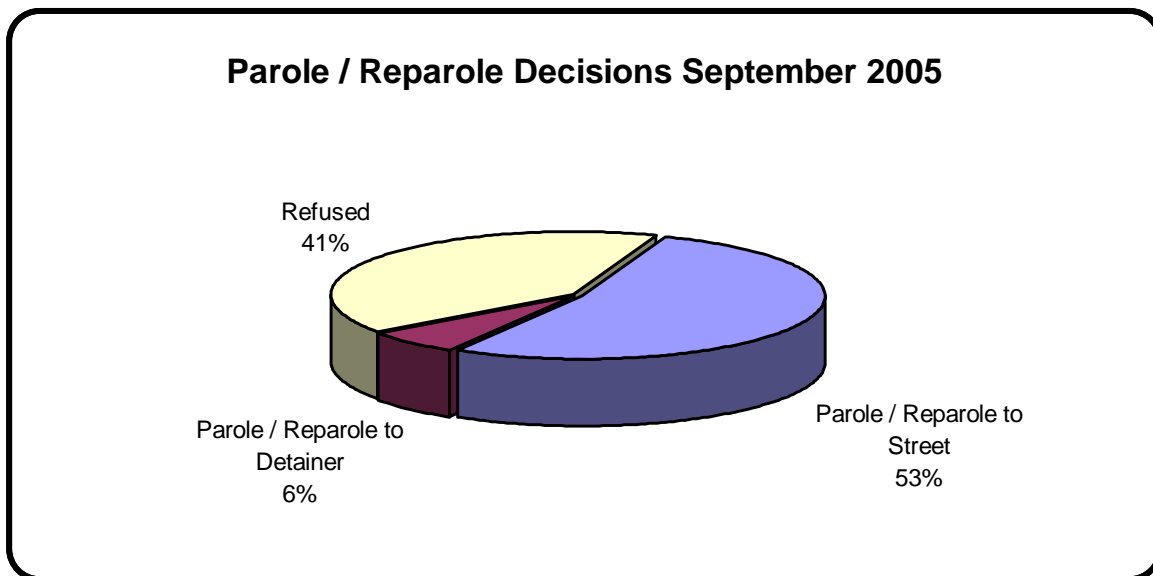
Region / District	Male			Female			Percent Male	Percent Female	Total Population
	White	Non White	Total	White	Non White	Total			
Chester	863	1,309	2,172	111	58	169	93%	7%	2,341
Philadelphia	1,014	7,206	8,220	126	438	564	94%	6%	8,784
<b>EASTERN REGION</b>	<b>1,877</b>	<b>8,515</b>	<b>10,392</b>	<b>237</b>	<b>496</b>	<b>733</b>	<b>93%</b>	<b>7%</b>	<b>11,125</b>
Allentown	1,216	1,531	2,747	189	139	328	89%	11%	3,075
Harrisburg	1,626	1,706	3,332	230	156	386	90%	10%	3,718
Scranton	1,003	296	1,299	152	23	175	88%	12%	1,474
Williamsport	591	76	667	141	22	163	80%	20%	830
<b>CENTRAL REGION</b>	<b>4,436</b>	<b>3,609</b>	<b>8,045</b>	<b>712</b>	<b>340</b>	<b>1,052</b>	<b>88%</b>	<b>12%</b>	<b>9,097</b>
Altoona	789	120	909	107	11	118	89%	11%	1,027
Mercer	1,603	322	1,925	408	78	486	80%	20%	2,411
Erie	674	334	1,008	103	41	144	88%	13%	1,152
Pittsburgh	1,631	1,881	3,512	206	142	348	91%	9%	3,860
<b>WESTERN REGION</b>	<b>4,697</b>	<b>2,657</b>	<b>7,354</b>	<b>824</b>	<b>272</b>	<b>1,096</b>	<b>87%</b>	<b>13%</b>	<b>8,450</b>
<b>TOTAL</b>	<b>11,010</b>	<b>14,781</b>	<b>25,791</b>	<b>1,773</b>	<b>1,108</b>	<b>2,881</b>	<b>90%</b>	<b>10%</b>	<b>28,672</b>

**Table 6**  
**SUPERVISED POPULATION BY EMPLOYMENT STATUS and REGION / DISTRICT**  
**September 2005**

Region / District	Employed	Unemployed	Unemployment Rate	Unable to Work	Unknown	Non Reporting	Total Population
Chester	938	501	35%	266	3	633	2,341
Philadelphia	3,231	1,773	35%	900	8	2,872	8,784
<b>EASTERN REGION</b>	<b>4,169</b>	<b>2,274</b>	<b>35%</b>	<b>1,166</b>	<b>11</b>	<b>3,505</b>	<b>11,125</b>
Allentown	1,289	557	30%	372	0	857	3,075
Harrisburg	1,764	635	26%	273	5	1,041	3,718
Scranton	711	306	30%	142	10	305	1,474
Williamsport	477	134	22%	99	1	119	830
<b>CENTRAL REGION</b>	<b>4,241</b>	<b>1,632</b>	<b>28%</b>	<b>886</b>	<b>16</b>	<b>2,322</b>	<b>9,097</b>
Altoona	513	129	20%	165	0	220	1,027
Mercer	1,015	618	38%	405	1	372	2,411
Erie	483	205	30%	176	2	286	1,152
Pittsburgh	1,651	363	18%	826	4	1,016	3,860
<b>WESTERN REGION</b>	<b>3,662</b>	<b>1,315</b>	<b>26%</b>	<b>1,572</b>	<b>7</b>	<b>1,894</b>	<b>8,450</b>
<b>TOTAL</b>	<b>12,072</b>	<b>5,221</b>	<b>30%</b>	<b>3,624</b>	<b>34</b>	<b>7,721</b>	<b>28,672</b>

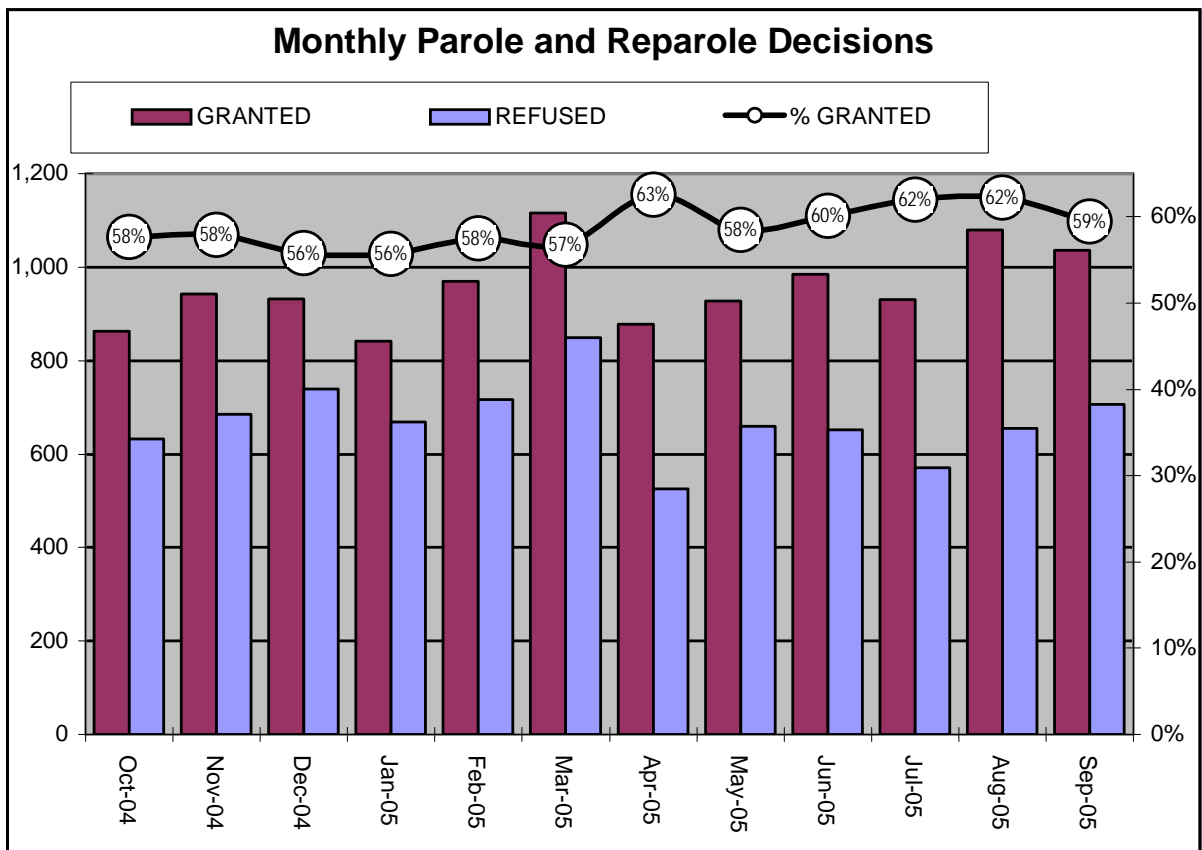
**Table 7  
BOARD DECISIONS  
September 2005**

<b>Type of Decision</b>		<b>Total</b>
Parole / Reparole to Street		924
Parole / Reparole to Detainer		112
Refused		706
Total Considered		1,742
Percent Granted		59%
Recommitments		570
Refer to Prior Action		130
Assigned by Courts		309
Other Decisions		742
<b>Total Decisions</b>		<b>3,493</b>



**Table 8**  
**MONTHLY PAROLE and REPAROLE DECISIONS**  
**September 2005**

MONTH/YEAR	GRANTED	REFUSED	CONSIDERED	% GRANTED
Oct-04	862	633	1,495	58%
Nov-04	942	685	1,627	58%
Dec-04	932	739	1,671	56%
Jan-05	841	668	1,509	56%
Feb-05	970	716	1,686	58%
Mar-05	1,116	849	1,965	57%
Apr-05	878	526	1,404	63%
May-05	927	659	1,586	58%
Jun-05	984	652	1,636	60%
Jul-05	931	571	1,502	62%
Aug-05	1,080	655	1,735	62%
Sep-05	1,036	706	1,742	59%
<b>Monthly Avg Prior 12 Mo</b>	958	672	1,630	59%



## PBPP Population Breakdown By Place of Incarceration/Jurisdiction – September 2005

Monthly Count of Board Actions							
Type of Decision	Non-SCI			SCI			Total Board Actions
	Parole	Refuse	Total	Parole	Refuse	Total	
January 2005	79	48	127	762	620	1,382	1,509
February 2005	78	54	132	892	662	1,554	1,686
March 2005	109	51	160	1,007	798	1,805	1,965
April 2005	66	16	82	812	510	1,322	1,404
May 2005	78	46	124	852	610	1,462	1,586
June 2005	71	34	105	913	618	1,531	1,636
July 2005	59	35	94	873	535	1,408	1,502
August 2005	98	30	128	982	625	1,607	1,735
September 2005	95	36	131	941	670	1,611	1,742
<b>2005 Total</b>	<b>733</b>	<b>350</b>	<b>1,083</b>	<b>8,034</b>	<b>5,648</b>	<b>13,682</b>	<b>14,765</b>

Offender Status- September 2005					
Status	State Prison	County Prison	County Sentence	Other States Cases	Total
Supervision	13,701	1,174	3,479	2,597	20,951
Absconder	1,393	87	208	16	1,704
Detention	4,703	365	738	211	6,017
<b>Total</b>	<b>19,797</b>	<b>1,626</b>	<b>4,425</b>	<b>2,824</b>	<b>28,672</b>

PBPP Monthly Population Profile						
Offender Status	Apr 05	May 05	Jun 05	Jul 05	Aug 05	Sep 05
<b>State sentence from state institution</b>	<b>19,428</b>	<b>19,511</b>	<b>19,564</b>	<b>19,682</b>	<b>19,750</b>	<b>19,797</b>
<i>Supervision</i>	13,873	13,824	13,811	13,789	13,734	13,701
<i>Absconder</i>	1,348	1,347	1,386	1,398	1,392	1,393
<i>Detention</i>	4,207	4,340	4,367	4,495	4,624	4,703
<b>State sentence from County Prison</b>	<b>1,638</b>	<b>1,624</b>	<b>1,640</b>	<b>1,638</b>	<b>1,632</b>	<b>1,626</b>
<i>Supervision</i>	1,180	1,165	1,177	1,187	1,189	1,174
<i>Absconder</i>	94	96	94	81	84	87
<i>Detention</i>	364	363	369	370	359	365
<b>County sentence Prob &amp; Parole</b>	<b>4,310</b>	<b>4,319</b>	<b>4,343</b>	<b>4,369</b>	<b>4,391</b>	<b>4,425</b>
<i>Supervision</i>	3,430	3,419	3,443	3,456	3,443	3,479
<i>Absconder</i>	225	233	223	217	210	208
<i>Detention</i>	655	667	677	696	738	738
<b>Other state's sentence Prob &amp; Parole</b>	<b>2,803</b>	<b>2,842</b>	<b>2,825</b>	<b>2,799</b>	<b>2,812</b>	<b>2,824</b>
<i>Supervision</i>	2,555	2,597	2,601	2,571	2,597	2,597
<i>Absconder</i>	28	32	24	24	17	16
<i>Detention</i>	220	213	200	204	198	211
<b>PBPP Population end of month</b>	<b>28,179</b>	<b>28,296</b>	<b>28,372</b>	<b>28,488</b>	<b>28,585</b>	<b>28,672</b>



**PBPP Population Breakdown By Place of Incarceration/Jurisdiction – September 2005**

<b>Additions and Deletions</b>						
	<b>Apr 05</b>	<b>May 05</b>	<b>Jun 05</b>	<b>Jul 05</b>	<b>Aug 05</b>	<b>Sep 05</b>
<b>Total Additions</b>	<b>1,183</b>	<b>1,181</b>	<b>1,223</b>	<b>1,079</b>	<b>1,284</b>	<b>1,240</b>
State sentence - SCI	739	733	804	724	815	764
State sentence - Cnty Prison	78	68	85	38	73	74
County sentence Prob & Parole	194	206	196	201	221	237
Other state's sentence	172	174	138	116	175	165
<b>Total Deletions</b>	<b>1,082</b>	<b>1,059</b>	<b>1,142</b>	<b>961</b>	<b>1,180</b>	<b>1,151</b>
<b>State sentence - SCI</b>	<b>683</b>	<b>626</b>	<b>709</b>	<b>580</b>	<b>717</b>	<b>683</b>
<i>Technical Violator</i>	317	222	285	247	260	284
<i>Convicted Violator</i>	118	100	123	75	131	134
<i>Maximum Expiration</i>	225	259	272	230	291	230
<i>Other Case Closure</i>	23	45	29	28	35	35
<b>State sentence - Cnty Prison</b>	<b>70</b>	<b>61</b>	<b>69</b>	<b>39</b>	<b>73</b>	<b>80</b>
<i>Technical Violator</i>	17	13	24	16	27	24
<i>Convicted Violator</i>	10	8	9	3	6	10
<i>Maximum Expiration</i>	39	39	33	15	34	43
<i>Other Case Closure</i>	4	1	3	5	6	3
<b>County sentence Prob &amp; Parole</b>	<b>199</b>	<b>236</b>	<b>205</b>	<b>203</b>	<b>225</b>	<b>231</b>
<i>Technical Violator</i>	54	33	48	39	45	49
<i>Convicted Violator</i>	21	20	14	17	17	29
<i>Maximum Expiration</i>	77	131	104	102	110	108
<i>Other Case Closure</i>	47	52	39	45	53	45
<b>Other state's sentence</b>	<b>130</b>	<b>136</b>	<b>159</b>	<b>139</b>	<b>165</b>	<b>157</b>
<i>Technical Violator</i>	1	2	5	3	2	1
<i>Convicted Violator</i>	1	3	3	0	2	2
<i>Maximum Expiration</i>	71	56	75	48	54	57
<i>Other Case Closure</i>	57	75	76	88	107	97
<b>PBPP Population end of month</b>	<b>28,179</b>	<b>28,296</b>	<b>28,372</b>	<b>28,488</b>	<b>28,585</b>	<b>28,672</b>