

# COMMONWEALTH OF PENNSYLVANIA

## Board of Probation and Parole

### MONTHLY PROGRAM REPORT

January 2006



**Edward G. Rendell**  
Governor

Catherine C. McVey  
Chairman

Michael L. Green  
Member

Jeffrey R. Imboden  
Member

Benjamin Martinez  
Member

Gerard N. Massaro, Ph.D.  
Member

Sean R. Ryan  
Member

Michael M. Webster  
Member

Lloyd A. White  
Member

Victim Advocate

pbpp  
AN EQUAL OPPORTUNITY EMPLOYER

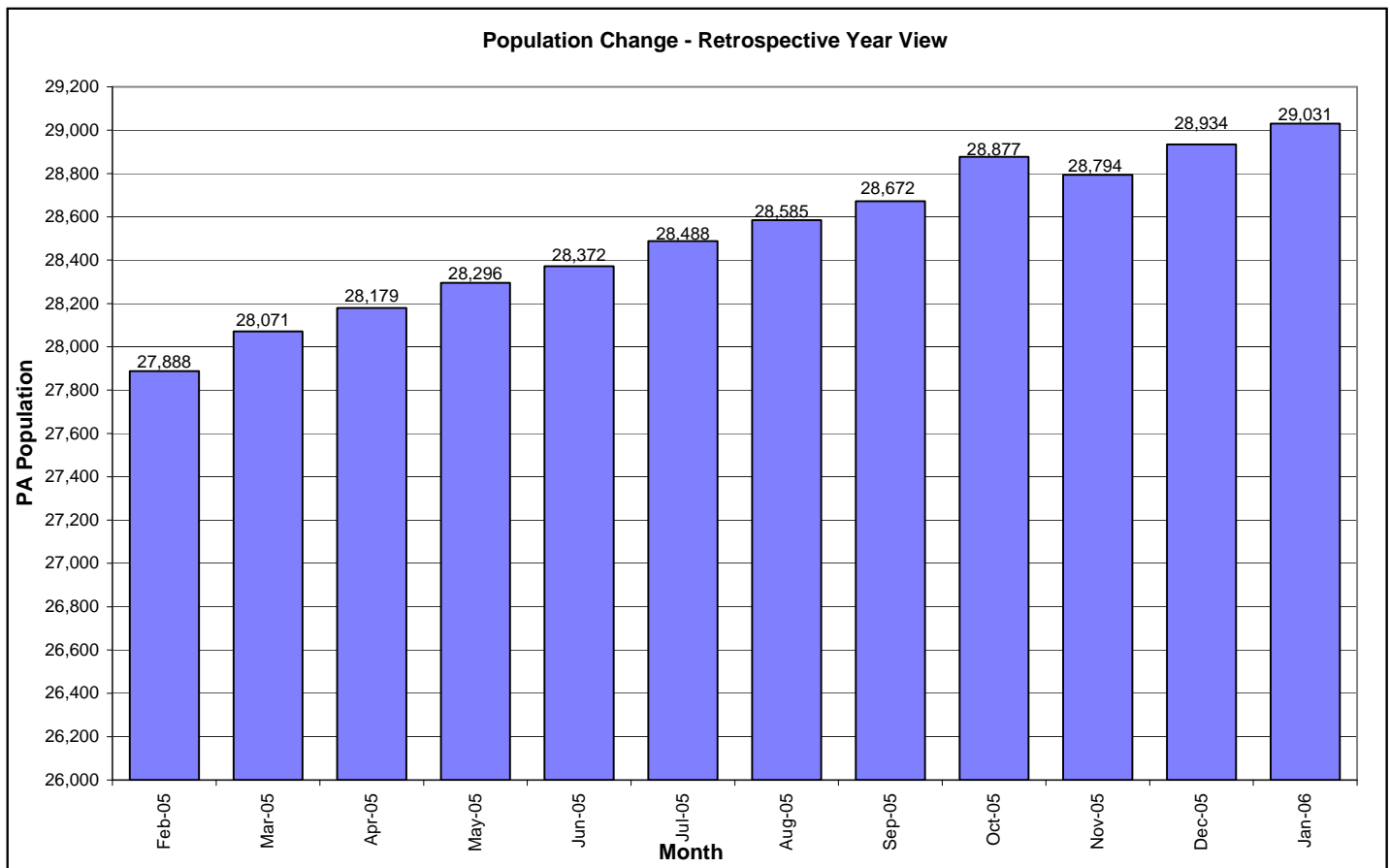
**Table 1  
WORKLOAD AND POPULATION CHANGES BY REGION / DISTRICT  
January 2006**

REGION / DISTRICT	Beginning Fiscal Yr <sup>1</sup> July 2005	Current Month Population	Fiscal YTD Index	Additions	Deletions		Number of Agents <sup>2</sup>	Average Workload	Total Workload
					Recommits/ Revocations	Other Deletions			
CHESTER	2,366	2,308	98	87	29	42	33	126	4,143
PHILADELPHIA	8,674	8,954	103	352	132	124	113	139	15,670
<b>EASTERN REGION</b>	<b>11,040</b>	<b>11,262</b>	<b>102</b>	<b>439</b>	<b>161</b>	<b>166</b>	<b>146</b>	<b>136</b>	<b>19,813</b>
ALLENTOWN	3,017	3,121	103	152	47	89	40	134	5,366
HARRISBURG	3,669	3,760	102	118	98	84	53	126	6,665
SCRANTON	1,444	1,526	106	82	23	58	22	135	2,965
WILLIAMSPORT	830	822	99	36	20	27	14	116	1,629
<b>CENTRAL REGION</b>	<b>8,960</b>	<b>9,229</b>	<b>103</b>	<b>388</b>	<b>188</b>	<b>258</b>	<b>129</b>	<b>129</b>	<b>16,624</b>
ALTOONA	1,044	1,043	100	38	14	15	16	132	2,105
MERCER	2,369	2,464	104	142	41	95	37	127	4,698
ERIE	1,135	1,193	105	53	15	19	17	129	2,193
PITTSBURGH	3,824	3,840	100	152	67	80	61	116	7,106
<b>WESTERN REGION</b>	<b>8,372</b>	<b>8,540</b>	<b>102</b>	<b>385</b>	<b>137</b>	<b>209</b>	<b>131</b>	<b>123</b>	<b>16,101</b>
<b>TOTAL Supervised</b>	<b>28,372</b>	<b>29,031</b>	<b>102</b>	<b>1,212</b>	<b>486</b>	<b>633</b>	<b>406</b>	<b>129</b>	<b>52,539</b>

<sup>1</sup> effective June 30

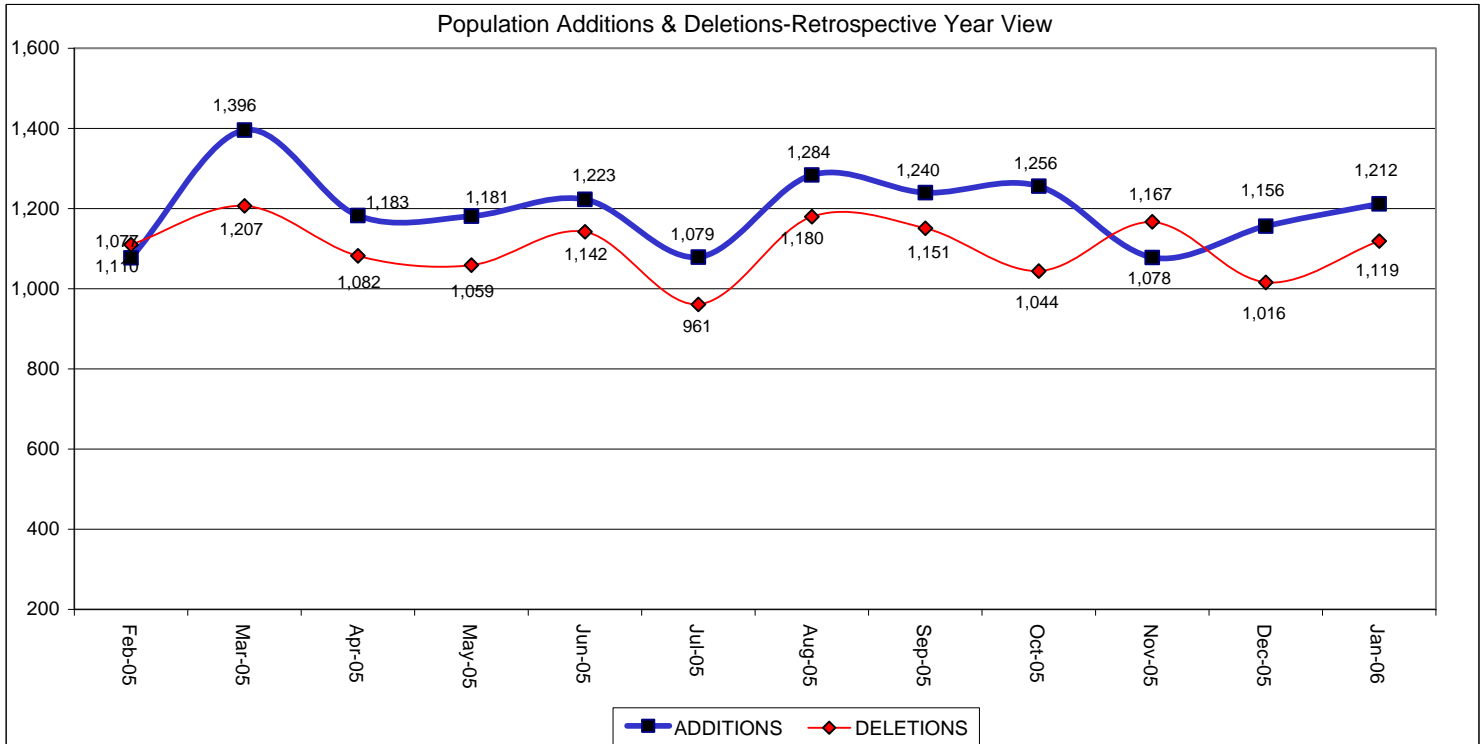
<sup>2</sup> Filled agent positions

PA Offenders in Other States	<b>2,659</b>	<b>2,724</b>	<b>102</b>	<b>40</b>	<b>12</b>	<b>17</b>
------------------------------	--------------	--------------	------------	-----------	-----------	-----------



**Table 2  
SUPERVISED POPULATION ADDITIONS AND DELETIONS  
January 2006**

Population Additions and Deletions	Parole	ReParole	Special County Probation	Special County Parole	Other States' Parole	Other States' Probation	Monthly Total	Fiscal YTD Total
<b>ADDITIONS</b>	631	207	155	63	19	137	1,212	8,305
<b>DELETIONS-RECOMMITMENTS</b>								
<i>Convicted Parole Violator</i>								
State Corrections	85	15	3	0	0	0	103	785
County Corrections	8	0	19	7	0	0	34	191
Other States	0	0	0	0	0	0	0	8
<b>Total Convicted Parole Violator</b>	93	15	22	7	0	0	137	984
<i>Technical Parole Violator</i>								
State Corrections	212	76	3	0	0	0	291	1,952
County Corrections	14	3	26	11	0	0	54	377
Other States	1	0	0	0	1	2	4	11
<b>Total Technical Parole Violator</b>	227	79	29	11	1	2	349	2,340
<b>TOTAL RECOMMITMENTS</b>	320	94	51	18	1	2	486	3,324
Deletion Maximum Discharge	250	58	75	35	14	41	473	3,135
Deletion Death	13	3	3	1	0	1	21	134
Deletion Other	14	5	31	7	7	75	139	1,045
<b>TOTAL DELETIONS</b>	597	160	160	61	22	119	1,119	7,638



**Table 3**  
**SUPERVISED POPULATION BY ORIGINATING JURISDICTION and REGION / DISTRICT**  
**January 2006**

Region / District	PA Parole State Sentence				County		Other States		Total Population
	State Prisons	Boot Camp	County Prisons	Subtotal	Special Probation	Special Parole	Parole	Probation	
Chester	1,399	100	224	1,723	238	4	59	284	2,308
Philadelphia	7,010	255	390	7,655	637	4	118	540	8,954
<b>Eastern Region</b>	<b>8,409</b>	<b>355</b>	<b>614</b>	<b>9,378</b>	<b>875</b>	<b>8</b>	<b>177</b>	<b>824</b>	<b>11,262</b>
Allentown	1,981	120	347	2,448	231	5	59	378	3,121
Harrisburg	2,677	230	206	3,113	259	6	55	327	3,760
Scranton	809	30	225	1,064	82	4	55	321	1,526
Williamsport	521	31	61	613	87	7	19	96	822
<b>Central Region</b>	<b>5,988</b>	<b>411</b>	<b>839</b>	<b>7,238</b>	<b>659</b>	<b>22</b>	<b>188</b>	<b>1,122</b>	<b>9,229</b>
Altoona	638	24	80	742	167	28	15	91	1,043
Mercer	520	11	20	551	1,170	666	10	67	2,464
Erie	821	34	43	898	169	46	20	60	1,193
Pittsburgh	2,608	212	51	2,871	627	48	63	231	3,840
<b>Western Region</b>	<b>4,587</b>	<b>281</b>	<b>194</b>	<b>5,062</b>	<b>2,133</b>	<b>788</b>	<b>108</b>	<b>449</b>	<b>8,540</b>
<b>Total</b>	<b>18,984</b>	<b>1,047</b>	<b>1,647</b>	<b>21,678</b>	<b>3,667</b>	<b>818</b>	<b>473</b>	<b>2,395</b>	<b>29,031</b>
<b>Percent of Total</b>	<b>65%</b>	<b>4%</b>	<b>6%</b>	<b>75%</b>	<b>13%</b>	<b>3%</b>	<b>2%</b>	<b>8%</b>	<b>100%</b>

**Table 4**  
**SUPERVISED POPULATION BY GRADE OF SUPERVISION and REGION / DISTRICT**  
**January 2006**

Region / District	Reporting						Non-Reporting		Total Population
	Enhanced	Maximum	Medium	Minimum	Not Classified	Subtotal	Absconder	Detainees	
Chester	28	574	511	527	27	1,667	111	530	2,308
Philadelphia	72	2,625	1,713	1,601	33	6,044	769	2,141	8,954
<b>Eastern Region</b>	<b>100</b>	<b>3,199</b>	<b>2,224</b>	<b>2,128</b>	<b>60</b>	<b>7,711</b>	<b>880</b>	<b>2,671</b>	<b>11,262</b>
Allentown	3	681	686	891	2	2,263	202	656	3,121
Harrisburg	12	705	650	1,334	10	2,711	205	844	3,760
Scranton	15	224	330	656	2	1,227	27	272	1,526
Williamsport	2	94	146	468	3	713	7	102	822
<b>Central Region</b>	<b>32</b>	<b>1,704</b>	<b>1,812</b>	<b>3,349</b>	<b>17</b>	<b>6,914</b>	<b>441</b>	<b>1,874</b>	<b>9,229</b>
Altoona	3	169	260	388	0	820	38	185	1,043
Mercer	6	256	653	1,157	1	2,073	96	295	2,464
Erie	9	194	223	445	15	886	43	264	1,193
Pittsburgh	50	951	834	964	6	2,805	156	879	3,840
<b>Western Region</b>	<b>68</b>	<b>1,570</b>	<b>1,970</b>	<b>2,954</b>	<b>22</b>	<b>6,584</b>	<b>333</b>	<b>1,623</b>	<b>8,540</b>
<b>Total</b>	<b>200</b>	<b>6,473</b>	<b>6,006</b>	<b>8,431</b>	<b>99</b>	<b>21,209</b>	<b>1,654</b>	<b>6,168</b>	<b>29,031</b>
<b>Percent of Total</b>	<b>1%</b>	<b>22%</b>	<b>21%</b>	<b>29%</b>	<b>0%</b>	<b>73%</b>	<b>6%</b>	<b>21%</b>	<b>100%</b>

**Table 5**  
**SUPERVISED POPULATION BY GENDER, RACE and REGION / DISTRICT**  
**January 2006**

Region / District	Male			Female			Percent Male	Percent Female	Total Population
	White	Non White	Total	White	Non White	Total			
Chester	848	1,299	2,147	111	50	161	93%	7%	2,308
Philadelphia	1,017	7,368	8,385	124	445	569	94%	6%	8,954
<b>EASTERN REGION</b>	<b>1,865</b>	<b>8,667</b>	<b>10,532</b>	<b>235</b>	<b>495</b>	<b>730</b>	<b>94%</b>	<b>6%</b>	<b>11,262</b>
Allentown	1,238	1,543	2,781	193	147	340	89%	11%	3,121
Harrisburg	1,663	1,713	3,376	227	157	384	90%	10%	3,760
Scranton	1,034	304	1,338	161	27	188	88%	12%	1,526
Williamsport	567	84	651	144	27	171	79%	21%	822
<b>CENTRAL REGION</b>	<b>4,502</b>	<b>3,644</b>	<b>8,146</b>	<b>725</b>	<b>358</b>	<b>1,083</b>	<b>88%</b>	<b>12%</b>	<b>9,229</b>
Altoona	805	124	929	104	10	114	89%	11%	1,043
Mercer	1,635	325	1,960	432	72	504	80%	20%	2,464
Erie	687	357	1,044	104	45	149	88%	12%	1,193
Pittsburgh	1,604	1,883	3,487	212	141	353	91%	9%	3,840
<b>WESTERN REGION</b>	<b>4,731</b>	<b>2,689</b>	<b>7,420</b>	<b>852</b>	<b>268</b>	<b>1,120</b>	<b>87%</b>	<b>13%</b>	<b>8,540</b>
<b>TOTAL</b>	<b>11,098</b>	<b>15,000</b>	<b>26,098</b>	<b>1,812</b>	<b>1,121</b>	<b>2,933</b>	<b>90%</b>	<b>10%</b>	<b>29,031</b>

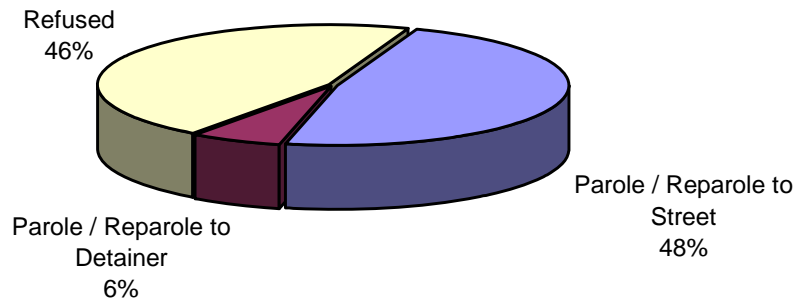
**Table 6**  
**SUPERVISED POPULATION BY EMPLOYMENT STATUS and REGION / DISTRICT**  
**January 2006**

Region / District	Employed	Unemployed	Unemployment Rate	Unable to Work	Unknown	Non Reporting	Total Population
Chester	1,025	431	30%	205	6	641	2,308
Philadelphia	3,190	1,970	38%	879	5	2,910	8,954
<b>EASTERN REGION</b>	<b>4,215</b>	<b>2,401</b>	<b>36%</b>	<b>1,084</b>	<b>11</b>	<b>3,551</b>	<b>11,262</b>
Allentown	1,355	523	28%	385	0	858	3,121
Harrisburg	1,882	559	23%	266	4	1,049	3,760
Scranton	791	287	27%	147	2	299	1,526
Williamsport	455	155	25%	103	0	109	822
<b>CENTRAL REGION</b>	<b>4,483</b>	<b>1,524</b>	<b>25%</b>	<b>901</b>	<b>6</b>	<b>2,315</b>	<b>9,229</b>
Altoona	503	146	22%	170	1	223	1,043
Mercer	1,041	601	37%	429	2	391	2,464
Erie	513	198	28%	173	2	307	1,193
Pittsburgh	1,679	359	18%	760	7	1,035	3,840
<b>WESTERN REGION</b>	<b>3,736</b>	<b>1,304</b>	<b>26%</b>	<b>1,532</b>	<b>12</b>	<b>1,956</b>	<b>8,540</b>
<b>TOTAL</b>	<b>12,434</b>	<b>5,229</b>	<b>30%</b>	<b>3,517</b>	<b>29</b>	<b>7,822</b>	<b>29,031</b>

**Table 7  
BOARD DECISIONS  
January 2006**

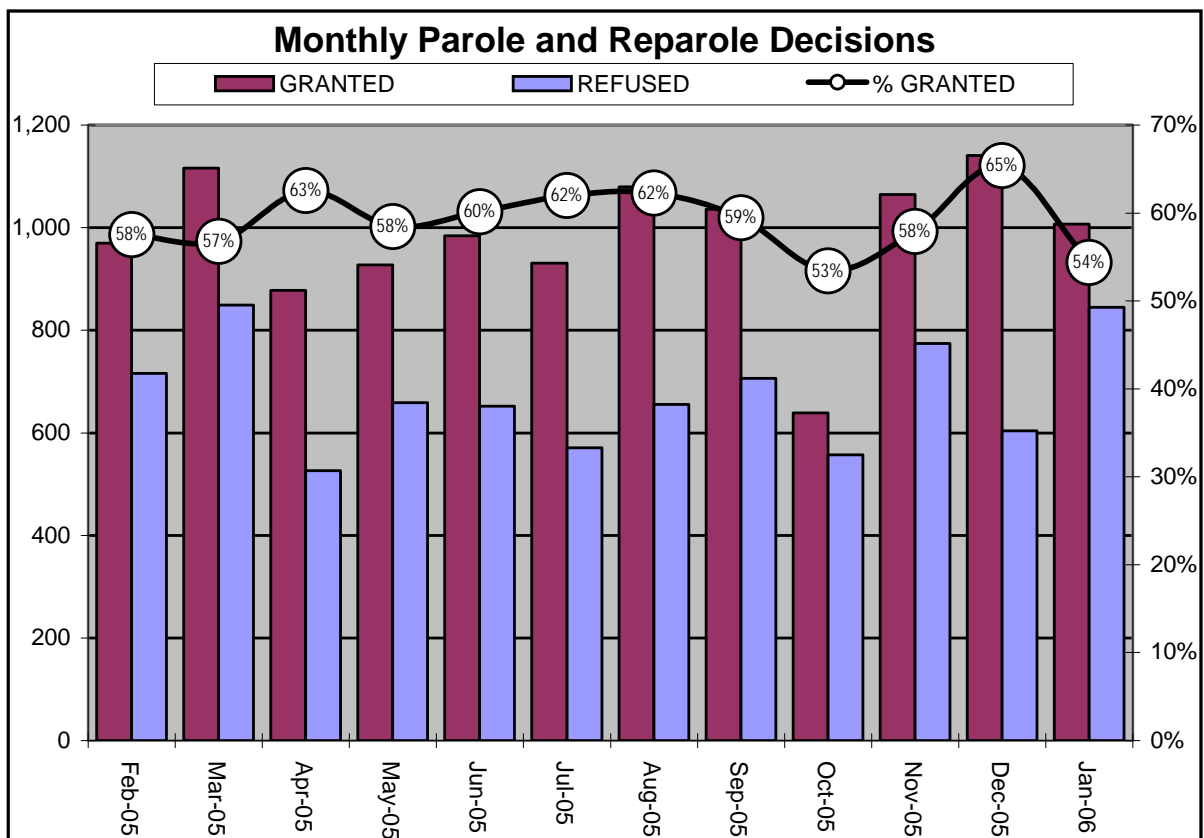
<b>Type of Decision</b>		<b>Total</b>
Parole / Reparole to Street		890
Parole / Reparole to Detainer		117
Refused		845
Total Considered		1,852
Percent Granted		54%
Recommitments		551
Refer to Prior Action		186
Assigned by Courts		342
Other Decisions		743
<b>Total Decisions</b>		<b>3,674</b>

**Parole / Reparole Decisions January 2006**



**Table 8**  
**MONTHLY PAROLE and REPAROLE DECISIONS**  
**January 2006**

MONTH/YEAR	GRANTED	REFUSED	CONSIDERED	% GRANTED
Feb-05	970	716	1,686	58%
Mar-05	1,116	849	1,965	57%
Apr-05	878	526	1,404	63%
May-05	927	659	1,586	58%
Jun-05	984	652	1,636	60%
Jul-05	931	571	1,502	62%
Aug-05	1,080	655	1,735	62%
Sep-05	1,036	706	1,742	59%
Oct-05	639	557	1,196	53%
Nov-05	1,065	774	1,839	58%
Dec-05	1,141	604	1,745	65%
Jan-06	1,007	845	1,852	54%
<b>Monthly Avg Prior 12 Mo</b>	<b>981</b>	<b>676</b>	<b>1,657</b>	<b>59%</b>



## PBPP Population Breakdown By Place of Incarceration/Jurisdiction – January 2006

Monthly Count of Board Actions							
	Non-SCI			SCI			
Type of Decision	Parole	Refuse	Total	Parole	Refuse	Total	Total Board Actions
January 2006	78	44	122	929	801	1,730	<b>1,852</b>
<b>2006 Total</b>	<b>78</b>	<b>44</b>	<b>122</b>	<b>929</b>	<b>801</b>	<b>1,730</b>	<b>1,852</b>

Offender Status- January 2006					
Status	State Prison	County Prison	County Sentence	Other States Cases	Total
Supervision	13,795	1,212	3,549	2,653	21,209
Absconder	1,351	78	221	4	1,654
Detention	4,885	357	715	211	6,168
<b>Total</b>	<b>20,031</b>	<b>1,647</b>	<b>4,485</b>	<b>2,868</b>	<b>29,031</b>

PBPP Monthly Population Profile						
Offender Status	Aug 05	Sep 05	Oct 05	Nov 05	Dec 05	Jan 06
<b>State sentence from state institution</b>	<b>19,750</b>	<b>19,797</b>	<b>19,988</b>	<b>19,906</b>	<b>19,975</b>	<b>20,031</b>
<i>Supervision</i>	13,734	13,701	13,892	13,783	13,754	13,795
<i>Absconder</i>	1,392	1,393	1,410	1,398	1,416	1,351
<i>Detention</i>	4,624	4,703	4,686	4,725	4,805	4,885
<b>State sentence from County Prison</b>	<b>1,632</b>	<b>1,626</b>	<b>1,644</b>	<b>1,639</b>	<b>1,657</b>	<b>1,647</b>
<i>Supervision</i>	1,189	1,174	1,203	1,203	1,217	1,212
<i>Absconder</i>	84	87	79	79	78	78
<i>Detention</i>	359	365	362	357	362	357
<b>County sentence Prob &amp; Parole</b>	<b>4,391</b>	<b>4,425</b>	<b>4,417</b>	<b>4,401</b>	<b>4,454</b>	<b>4,485</b>
<i>Supervision</i>	3,443	3,479	3,463	3,448	3,533	3,549
<i>Absconder</i>	210	208	221	228	212	221
<i>Detention</i>	738	738	733	725	709	715
<b>Other state's sentence Prob &amp; Parole</b>	<b>2,812</b>	<b>2,824</b>	<b>2,828</b>	<b>2,848</b>	<b>2,848</b>	<b>2,868</b>
<i>Supervision</i>	2,597	2,597	2,597	2,633	2,642	2,653
<i>Absconder</i>	17	16	10	9	6	4
<i>Detention</i>	198	211	221	206	200	211
<b>PBPP Population end of month</b>	<b>28,585</b>	<b>28,672</b>	<b>28,877</b>	<b>28,794</b>	<b>28,934</b>	<b>29,031</b>



**PBPP Population Breakdown By Place of Incarceration/Jurisdiction – January 2006**

<b>Additions and Deletions</b>						
	<b>Aug 05</b>	<b>Sep 05</b>	<b>Oct 05</b>	<b>Nov 05</b>	<b>Dec 05</b>	<b>Jan 06</b>
<b>Total Additions</b>	<b>1,284</b>	<b>1,240</b>	<b>1,256</b>	<b>1,078</b>	<b>1,156</b>	<b>1,212</b>
State sentence - SCI	815	764	844	671	684	766
State sentence - Cnty Prison	73	74	77	62	78	73
County sentence Prob & Parole	221	237	184	187	231	218
Other state's sentence	175	165	151	158	163	155
<b>Total Deletions</b>	<b>1,180</b>	<b>1,151</b>	<b>1,044</b>	<b>1,167</b>	<b>1,016</b>	<b>1,119</b>
<b>State sentence - SCI</b>	<b>717</b>	<b>683</b>	<b>617</b>	<b>734</b>	<b>586</b>	<b>673</b>
<i>Technical Violator</i>	260	284	283	304	235	288
<i>Convicted Violator</i>	131	134	102	121	99	100
<i>Maximum Expiration</i>	291	230	208	279	226	254
<i>Other Case Closure</i>	35	35	24	30	26	31
<b>State sentence - Cnty Prison</b>	<b>73</b>	<b>80</b>	<b>60</b>	<b>63</b>	<b>50</b>	<b>84</b>
<i>Technical Violator</i>	27	24	17	15	13	18
<i>Convicted Violator</i>	6	10	9	9	2	8
<i>Maximum Expiration</i>	34	43	32	36	32	54
<i>Other Case Closure</i>	6	3	2	3	3	4
<b>County sentence Prob &amp; Parole</b>	<b>225</b>	<b>231</b>	<b>217</b>	<b>227</b>	<b>212</b>	<b>221</b>
<i>Technical Violator</i>	45	49	46	46	28	40
<i>Convicted Violator</i>	17	29	29	27	22	29
<i>Maximum Expiration</i>	110	108	101	111	110	110
<i>Other Case Closure</i>	53	45	41	43	52	42
<b>Other state's sentence</b>	<b>165</b>	<b>157</b>	<b>150</b>	<b>143</b>	<b>168</b>	<b>141</b>
<i>Technical Violator</i>	2	1	1	0	0	3
<i>Convicted Violator</i>	2	2	1	1	2	0
<i>Maximum Expiration</i>	54	57	71	70	62	55
<i>Other Case Closure</i>	107	97	77	72	104	83
<b>PBPP Population end of month</b>	<b>28,585</b>	<b>28,672</b>	<b>28,877</b>	<b>28,794</b>	<b>28,934</b>	<b>29,031</b>