

# COMMONWEALTH OF PENNSYLVANIA

## Board of Probation and Parole

### MONTHLY PROGRAM REPORT

September 2004



**Edward G. Rendell**  
Governor

Michael L. Green  
Acting Chairman

Allen Castor  
Member

Jeffrey R. Imboden  
Member

Gary R. Lucht  
Member

Gerard N. Massaro, Ph.D.  
Member

Sean R. Ryan  
Member

Michael M. Webster  
Member

Lloyd A. White  
Member

Mary A. Achilles  
Victim Advocate

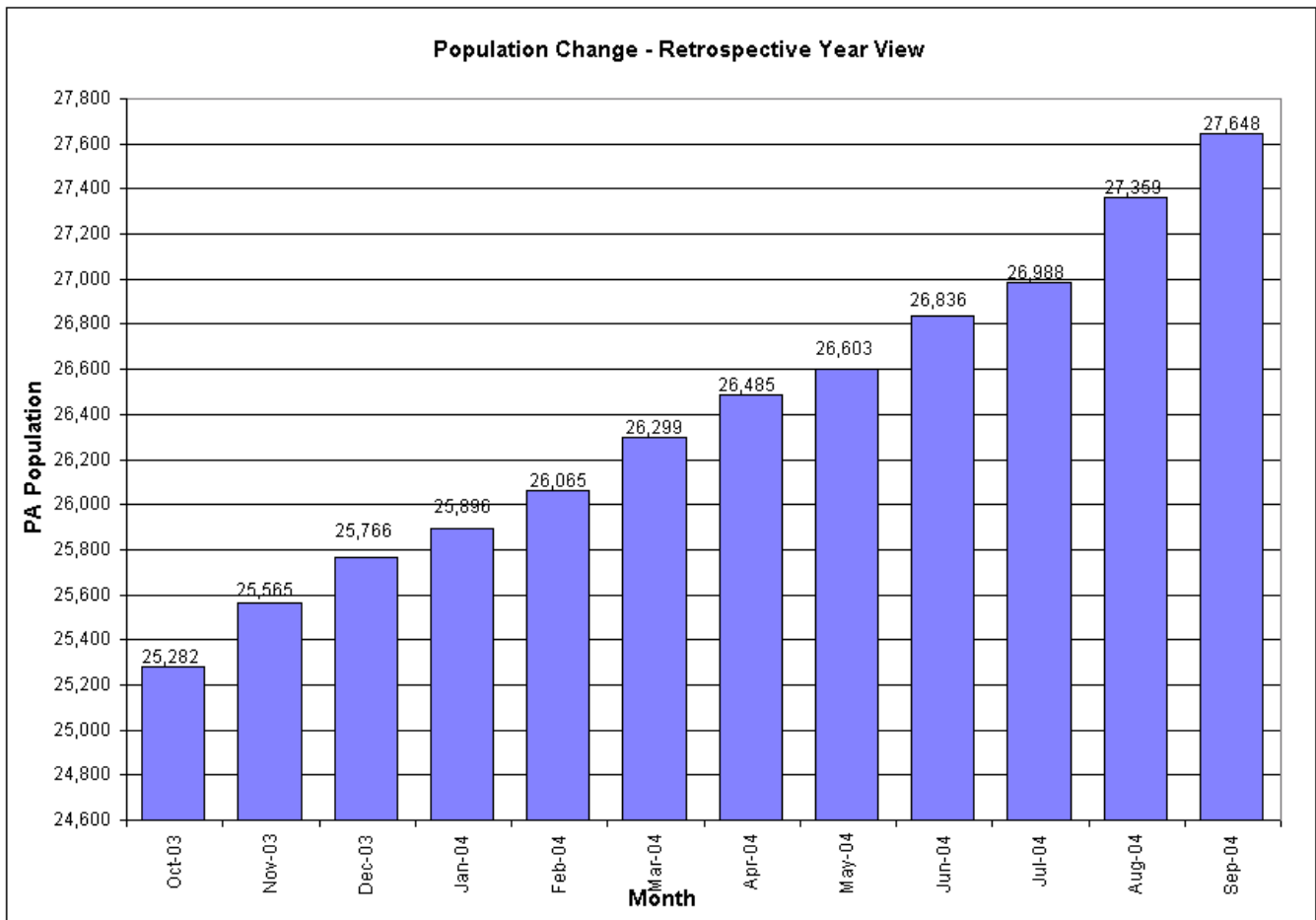
**Table 1**  
**WORKLOAD AND POPULATION CHANGES BY REGION / DISTRICT**  
**September 2004**

REGION / DISTRICT	Beginning Fiscal Yr <sup>1</sup> July 2004	Current Month Population	Fiscal YTD Index	Additions	Deletions		Number of Agents <sup>2</sup>	Average Workload	Total Workload
					Recommits/ Revocations	Other Deletions			
CHESTER	2,119	2,270	107	62	42	38	31	152	4,708
PHILADELPHIA	8,168	8,315	102	327	93	153	106	146	15,518
<b>EASTERN REGION</b>	<b>10,287</b>	<b>10,585</b>	<b>103</b>	<b>389</b>	<b>135</b>	<b>191</b>	<b>137</b>	<b>148</b>	<b>20,226</b>
ALLENTOWN	2,744	2,889	105	164	52	57	38	144	5,475
HARRISBURG	3,509	3,649	104	188	29	43	51	135	6,904
SCRANTON	1,344	1,386	103	76	36	45	21	138	2,902
WILLIAMSPORT	785	789	101	31	10	16	13	129	1,671
<b>CENTRAL REGION</b>	<b>8,382</b>	<b>8,713</b>	<b>104</b>	<b>459</b>	<b>127</b>	<b>161</b>	<b>123</b>	<b>138</b>	<b>16,952</b>
ALTOONA	889	935	105	38	15	5	15	141	2,117
MERCER	2,361	2,381	101	147	38	85	35	147	5,154
ERIE	1,126	1,154	102	58	28	16	17	134	2,279
PITTSBURGH	3,791	3,880	102	151	75	73	59	130	7,686
<b>WESTERN REGION</b>	<b>8,167</b>	<b>8,350</b>	<b>102</b>	<b>394</b>	<b>156</b>	<b>179</b>	<b>126</b>	<b>137</b>	<b>17,236</b>
<b>TOTAL Supervised</b>	<b>26,836</b>	<b>27,648</b>	<b>103</b>	<b>1,242</b>	<b>418</b>	<b>531</b>	<b>386</b>	<b>141</b>	<b>54,414</b>

<sup>1</sup> effective June 30

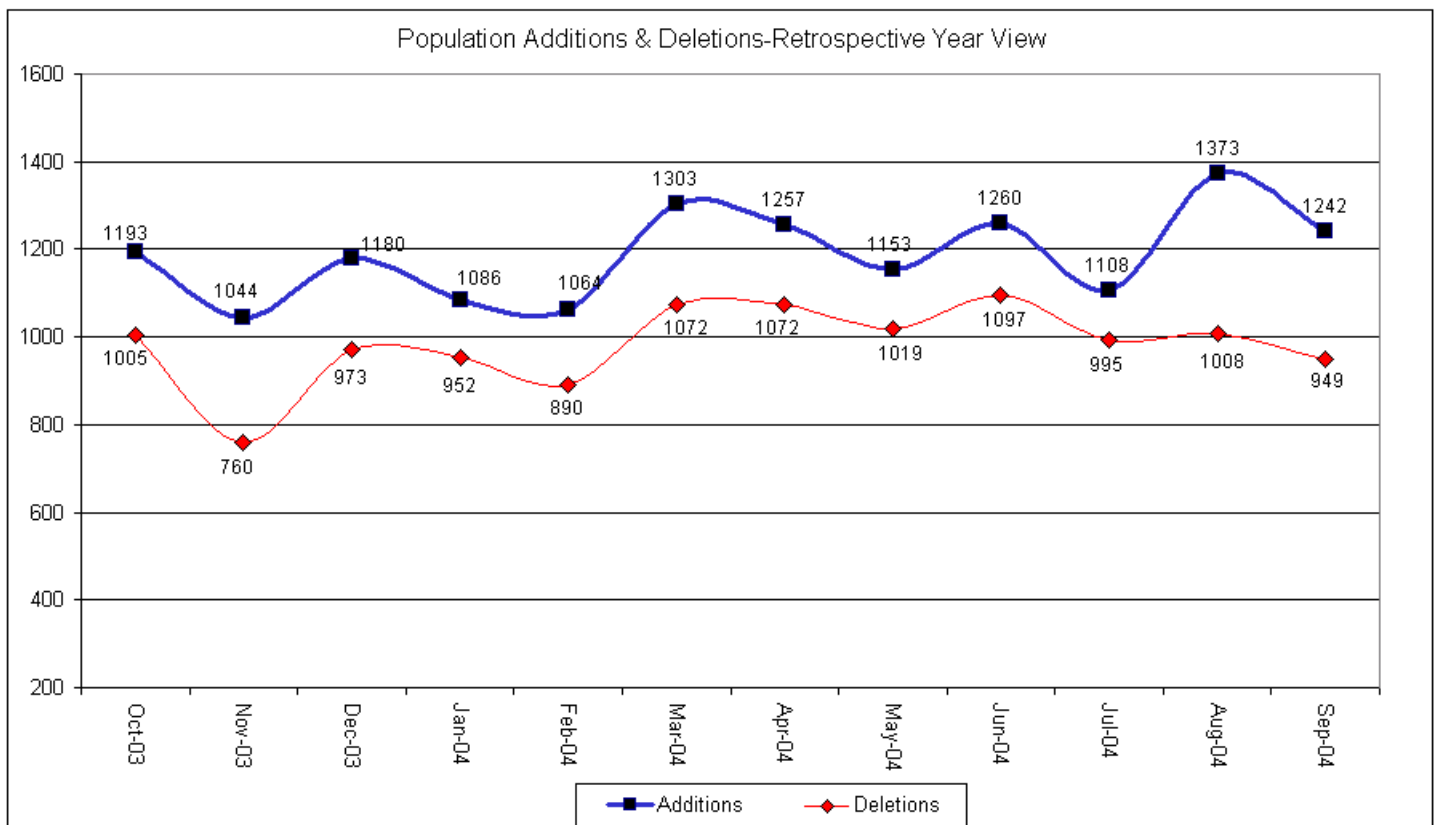
<sup>2</sup> Filled agent positions

PA Offenders in Other States	<b>2,521</b>	<b>2,610</b>	<b>104</b>	<b>61</b>	<b>15</b>	<b>21</b>
------------------------------	--------------	--------------	------------	-----------	-----------	-----------



**Table 2**  
**SUPERVISED POPULATION ADDITIONS AND DELETIONS**  
**September 2004**

Population Additions and Deletions	Parole	ReParole	Special County Probation	Special County Parole	Other States' Parole	Other States' Probation	Monthly Total	Fiscal YTD Total
<b>ADDITIONS</b>	636	235	145	62	12	152	1,242	3,723
<b>DELETIONS-RECOMMITMENTS</b>								
<i>Convicted Parole Violator</i>								
State Corrections	66	17	2	0	0	0	85	275
County Corrections	9	0	18	3	0	0	30	100
Other States	0	0	0	0	0	0	0	7
<b>Total Convicted Parole Violator</b>	75	17	20	3	0	0	115	382
<i>Technical Parole Violator</i>								
State Corrections	181	61	4	1	0	0	247	690
County Corrections	25	3	23	5	0	0	56	155
Other States	0	0	0	0	0	0	0	2
<b>Total Technical Parole Violator</b>	206	64	27	6	0	0	303	847
<b>TOTAL RECOMMITMENTS</b>	281	81	47	9	0	0	418	1,229
Deletion Maximum Discharge	215	54	84	28	6	31	418	1,368
Deletion Death	11	1	1	0	1	2	16	55
Deletion Other	17	1	37	5	6	31	97	300
<b>TOTAL DELETIONS</b>	524	137	169	42	13	64	949	2,952



**Table 3**  
**SUPERVISED POPULATION BY ORIGINATING JURISDICTION and REGION / DISTRICT**  
**September 2004**

Region / District	PA Parole State Sentence				County		Other States		Total Population
	State Prisons	Boot Camp	County Prisons	Subtotal	Special Probation	Special Parole	Parole	Probation	
Chester	1,335	116	209	1,660	248	4	62	296	2,270
Philadelphia	6,781	252	351	7,384	502	4	98	327	8,315
<b>Eastern Region</b>	<b>8,116</b>	<b>368</b>	<b>560</b>	<b>9,044</b>	<b>750</b>	<b>8</b>	<b>160</b>	<b>623</b>	<b>10,585</b>
Allentown	1,874	116	367	2,357	181	5	48	298	2,889
Harrisburg	2,607	212	223	3,042	217	10	65	315	3,649
Scranton	711	36	267	1,014	77	2	45	248	1,386
Williamsport	501	30	59	590	81	2	19	97	789
<b>Central Region</b>	<b>5,693</b>	<b>394</b>	<b>916</b>	<b>7,003</b>	<b>556</b>	<b>19</b>	<b>177</b>	<b>958</b>	<b>8,713</b>
Altoona	577	22	71	670	133	34	18	80	935
Mercer	469	17	24	510	1,147	650	15	59	2,381
Erie	802	44	38	884	159	33	18	60	1,154
Pittsburgh	2,563	185	75	2,823	703	49	56	249	3,880
<b>Western Region</b>	<b>4,411</b>	<b>268</b>	<b>208</b>	<b>4,887</b>	<b>2,142</b>	<b>766</b>	<b>107</b>	<b>448</b>	<b>8,350</b>
<b>Total</b>	<b>18,220</b>	<b>1,030</b>	<b>1,684</b>	<b>20,934</b>	<b>3,448</b>	<b>793</b>	<b>444</b>	<b>2,029</b>	<b>27,648</b>
<b>Percent of Total</b>	<b>66%</b>	<b>4%</b>	<b>6%</b>	<b>76%</b>	<b>12%</b>	<b>3%</b>	<b>2%</b>	<b>7%</b>	<b>100%</b>

**Table 4**  
**SUPERVISED POPULATION BY GRADE OF SUPERVISION and REGION / DISTRICT**  
**September 2004**

Region / District	Reporting						Non-Reporting		Total Population
	Enhanced	Maximum	Medium	Minimum	Not Classified	Subtotal	Absconder	Detainees	
Chester	146	912	495	194	18	1,765	123	382	2,270
Philadelphia	75	3,164	1,822	589	88	5,738	837	1,740	8,315
<b>Eastern Region</b>	<b>221</b>	<b>4,076</b>	<b>2,317</b>	<b>783</b>	<b>106</b>	<b>7,503</b>	<b>960</b>	<b>2,122</b>	<b>10,585</b>
Allentown	32	923	785	430	37	2,207	187	495	2,889
Harrisburg	70	1,099	938	617	43	2,767	198	684	3,649
Scranton	28	396	425	245	2	1,096	43	247	1,386
Williamsport	1	130	247	298	5	681	7	101	789
<b>Central Region</b>	<b>131</b>	<b>2,548</b>	<b>2,395</b>	<b>1,590</b>	<b>87</b>	<b>6,751</b>	<b>435</b>	<b>1,527</b>	<b>8,713</b>
Altoona	12	340	263	115	17	747	36	152	935
Mercer	11	416	1,185	403	11	2,026	113	242	2,381
Erie	7	269	340	248	2	866	38	250	1,154
Pittsburgh	58	1,196	955	647	7	2,863	195	822	3,880
<b>Western Region</b>	<b>88</b>	<b>2,221</b>	<b>2,743</b>	<b>1,413</b>	<b>37</b>	<b>6,502</b>	<b>382</b>	<b>1,466</b>	<b>8,350</b>
<b>Total</b>	<b>440</b>	<b>8,845</b>	<b>7,455</b>	<b>3,786</b>	<b>230</b>	<b>20,756</b>	<b>1,777</b>	<b>5,115</b>	<b>27,648</b>
<b>Percent of Total</b>	<b>1.6%</b>	<b>32.0%</b>	<b>27.0%</b>	<b>13.7%</b>	<b>1.0%</b>	<b>75.1%</b>	<b>6.4%</b>	<b>18.5%</b>	<b>100.0%</b>

**Table 5**  
**SUPERVISED POPULATION BY GENDER, RACE and REGION / DISTRICT**  
**September 2004**

Region / District	Male			Female			Percent Male	Percent Female	Total Population
	White	Non White	Total	White	Non White	Total			
Chester	815	1,274	2,089	117	64	181	92%	8%	2,270
Philadelphia	908	6,882	7,790	102	423	525	94%	6%	8,315
<b>EASTERN REGION</b>	<b>1,723</b>	<b>8,156</b>	<b>9,879</b>	<b>219</b>	<b>487</b>	<b>706</b>	<b>93%</b>	<b>7%</b>	<b>10,585</b>
Allentown	1,153	1,433	2,586	166	137	303	90%	10%	2,889
Harrisburg	1,606	1,628	3,234	246	169	415	89%	11%	3,649
Scranton	951	265	1,216	143	27	170	88%	12%	1,386
Williamsport	567	74	641	127	21	148	81%	19%	789
<b>CENTRAL REGION</b>	<b>4,277</b>	<b>3,400</b>	<b>7,677</b>	<b>682</b>	<b>354</b>	<b>1,036</b>	<b>88%</b>	<b>12%</b>	<b>8,713</b>
Altoona	722	110	832	95	8	103	89%	11%	935
Mercer	1,576	328	1,904	409	68	477	80%	20%	2,381
Erie	668	356	1,024	86	44	130	89%	11%	1,154
Pittsburgh	1,590	1,913	3,503	213	164	377	90%	10%	3,880
<b>WESTERN REGION</b>	<b>4,556</b>	<b>2,707</b>	<b>7,263</b>	<b>803</b>	<b>284</b>	<b>1,087</b>	<b>87%</b>	<b>13%</b>	<b>8,350</b>
<b>TOTAL</b>	<b>10,556</b>	<b>14,263</b>	<b>24,819</b>	<b>1,704</b>	<b>1,125</b>	<b>2,829</b>	<b>90%</b>	<b>10%</b>	<b>27,648</b>

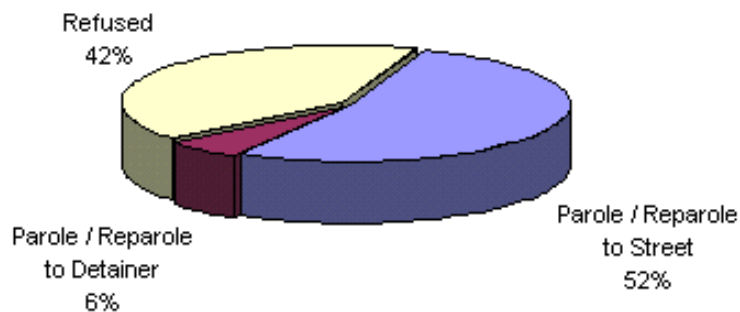
**Table 6**  
**SUPERVISED POPULATION BY EMPLOYMENT STATUS and REGION / DISTRICT**  
**September 2004**

Region / District	Employed	Unemployed	Unemployment Rate	Unable to Work	Unknown	Non Reporting	Total Population
Chester	619	844	58%	280	22	505	2,270
Philadelphia	2,395	2,619	52%	699	25	2,577	8,315
<b>EASTERN REGION</b>	<b>3,014</b>	<b>3,463</b>	<b>53%</b>	<b>979</b>	<b>47</b>	<b>3,082</b>	<b>10,585</b>
Allentown	1,051	817	44%	334	5	682	2,889
Harrisburg	1,635	754	32%	355	23	882	3,649
Scranton	545	412	43%	137	2	290	1,386
Williamsport	477	115	19%	88	1	108	789
<b>CENTRAL REGION</b>	<b>3,708</b>	<b>2,098</b>	<b>36%</b>	<b>914</b>	<b>31</b>	<b>1,962</b>	<b>8,713</b>
Altoona	423	169	29%	147	8	188	935
Mercer	1,051	579	36%	396	0	355	2,381
Erie	388	291	43%	185	2	288	1,154
Pittsburgh	1,803	263	13%	794	3	1,017	3,880
<b>WESTERN REGION</b>	<b>3,665</b>	<b>1,302</b>	<b>26%</b>	<b>1,522</b>	<b>13</b>	<b>1,848</b>	<b>8,350</b>
<b>TOTAL</b>	<b>10,387</b>	<b>6,863</b>	<b>40%</b>	<b>3,415</b>	<b>91</b>	<b>6,892</b>	<b>27,648</b>

**Table 7  
BOARD DECISIONS  
September 2004**

<b>Type of Decision</b>		<b>Total</b>
Parole / Reparole to Street		719
Parole / Reparole to Detainer		75
Refused		566
Total Considered		1,360
Percent Granted		58%
Recommitments		514
Refer to Prior Action		65
Assigned by Courts		565
Other Decisions		722
<b>Total Decisions</b>		<b>3,226</b>

**Parole / Reparole Decisions September 2004**



**Table 8**  
**MONTHLY PAROLE and REPAROLE DECISIONS**  
**September 2004**

MONTH/YEAR	GRANTED	REFUSED	CONSIDERED	% GRANTED
Oct-03	1,219	887	2,106	58%
Nov-03	808	557	1,365	59%
Dec-03	817	608	1,425	57%
Jan-04	960	682	1,642	58%
Feb-04	1,065	630	1,695	63%
Mar-04	1,239	865	2,104	59%
Apr-04	1,171	701	1,872	63%
May-04	935	632	1,567	60%
Jun-04	1,022	634	1,656	62%
Jul-04	925	776	1,701	54%
Aug-04	1,108	822	1,930	57%
Sep-04	794	566	1,360	58%
<b>Monthly Avg Prior 12 Mo</b>	1,005	697	1,702	59%

