

# COMMONWEALTH OF PENNSYLVANIA

## Board of Probation and Parole

### MONTHLY STATISTICAL REPORT

April 2002



**Mark Schweiker**  
Governor

William F. Ward  
Chairman

Allen Castor  
Member

Benjamin Martinez  
Member

Barbara K. Descher  
Member

Sean R. Ryan  
Member

Richard A. Kipp  
Member

Michael M. Webster  
Member

Gary R. Lucht  
Member

Lloyd A. White  
Member

Mary A. Achilles  
Victim Advocate

pbpp  
AN EQUAL OPPORTUNITY EMPLOYER

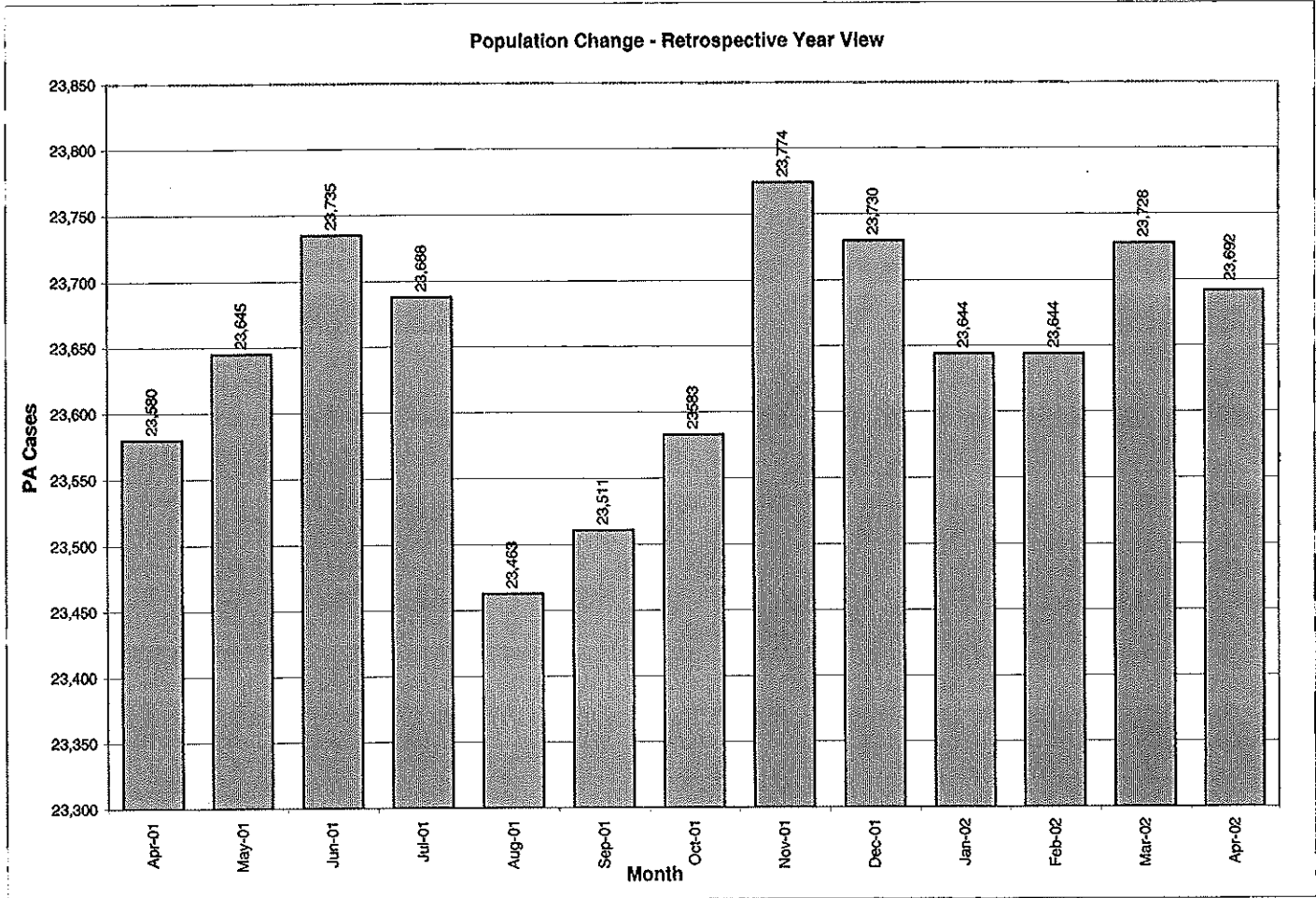


**Table 1**  
**WORKLOAD AND POPULATION CHANGES BY DISTRICT**  
**April 2002**

Type of Cases	Beginning FY Cases Jul-01	Current Month Cases	Fiscal YTD Index	Additions	Deletions		Number of Agents	Average Workload	Total Workload
					Recommits/ Revocations	Other Deletions			
CHESTER	1,975	1,908	97	70	43	35	30	129	3,878
PHILADELPHIA	7,313	7,328	100	230	144	117*	108	130	14,031
<b>EASTERN REGION</b>	<b>9,288</b>	<b>9,236</b>	<b>99</b>	<b>300</b>	<b>187</b>	<b>152</b>	<b>138</b>	<b>130</b>	<b>17,909</b>
ALLENTOWN	2,430	2,422	100	127	57	57	34	141	4,794
HARRISBURG	2,606	2,653	102	108	56	71	45	145	6,509
SCRANTON	1,056	1,021	97	52	29	20	17	148	2,521
WILLIAMSPORT	650	694	107	19	8	12	12	175	2,095
<b>CENTRAL REGION</b>	<b>6,742</b>	<b>6,790</b>	<b>101</b>	<b>306</b>	<b>150</b>	<b>160</b>	<b>108</b>	<b>147</b>	<b>15,919</b>
ALTOONA	772	741	96	25	20	17	14	150	2,103
MERCER	2,195	2,296	105	123	32	100	35	182	6,377
ERIE	949	926	98	40	15	15	16	122	1,956
PITTSBURGH	3,789	3,703	98	173	69	86	58	132	7,637
<b>WESTERN REGION</b>	<b>7,705</b>	<b>7,666</b>	<b>99</b>	<b>361</b>	<b>136</b>	<b>218</b>	<b>123</b>	<b>147</b>	<b>18,073</b>
<b>TOTAL CASES SUPERVISED</b>	<b>23,735</b>	<b>23,692</b>	<b>100</b>	<b>967</b>	<b>473</b>	<b>530</b>	<b>369</b>	<b>141</b>	<b>51,901</b>

\*Select program accounting adjustments were made.

Pa Cases in Other States	2,269	2,213	98	34	13	1
--------------------------	-------	-------	----	----	----	---

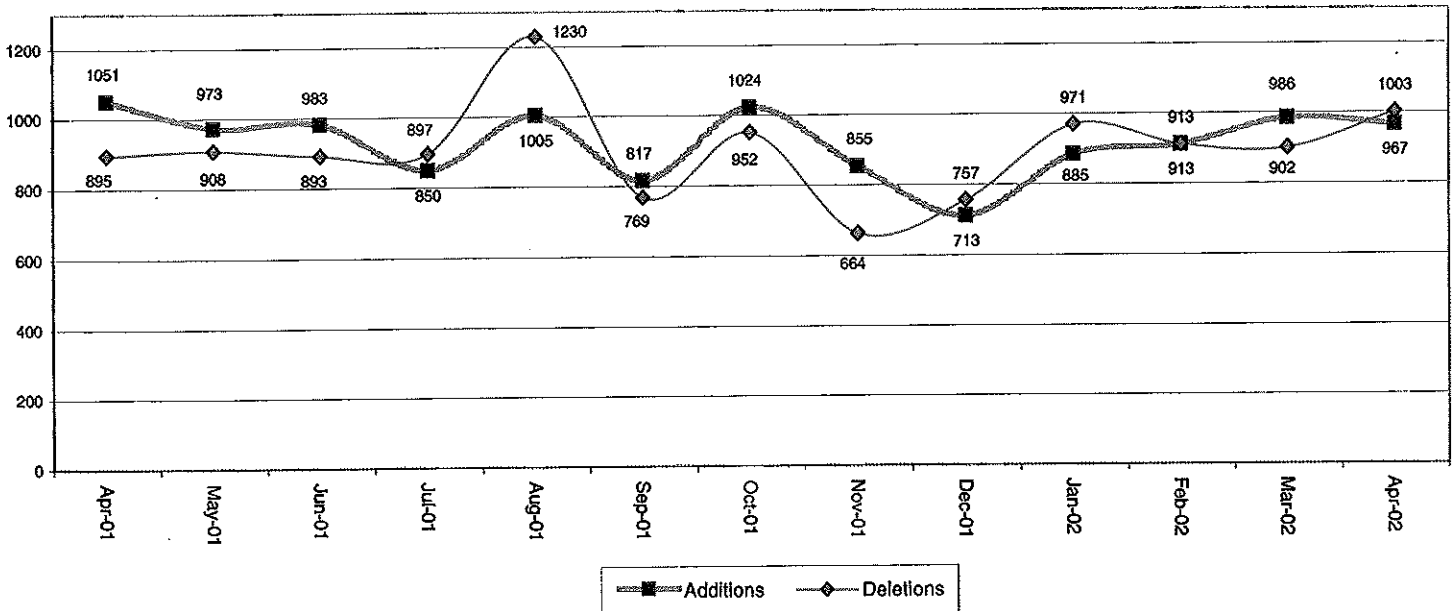


**Table 2**  
**CASE ADDITIONS AND DELETIONS FOR SUPERVISED OFFENDERS IN PENNSYLVANIA**  
**April 2002**

Case Additions and Deletions	PAROLE	REPAROLE	SPECIAL COUNTY PROBATION	SPECIAL COUNTY PAROLE	OTHER STATES' PAROLE	OTHER STATES' PROBATION	MONTHLY TOTAL	FISCAL YTD TOTAL
<b>ADDITIONS</b>	530	145	111	61	15	105	967	9,015
<b>DELETIONS-RECOMMITMENTS</b>								
<b>Convicted Parole Violator</b>								
State Corrections	77	21	1	0	0	0	99	782
County Corrections	15	1	18	4	0	0	38	250
Other States Cases	5	0	0	0	0	0	5	17
<b>Total Convicted Parole Violator</b>	97	22	19	4	0	0	142	1,049
<b>Technical Parole Violator</b>								
State Corrections	220	57	3	0	0	0	280	2,477
County Corrections	20	1	18	8	0	0	47	552
Other States Cases	3	0	0	0	0	1	4	37
<b>Total Technical Parole Violator</b>	243	58	21	8	0	1	331	3,066
<b>TOTAL RECOMMITMENTS</b>	340	80	40	12	0	1	473	4,115
Deletion Maximum Discharge	230	44	62	55	6	46	443	3,960
Deletion Death	13	1	1	0	1	2	18	142
Deletion Other	8*	1	18	5	4	33	69	843
<b>TOTAL DELETIONS</b>	591	126	121	72	11	82	1,003	9,058

\*Select program accounting adjustments were made.

**Population Additions and Deletions-Retrospective Year View**



**Table 3**  
**CASES BY ORIGINATING JURISDICTION**  
**BY REGION AND DISTRICT**  
**April 2002**

District/Region	PA Parole State Sentence				County		Other States		Total Cases
	from DOC	Boot Camp	Cnty Prisons	Subtotal	Spec Prob	Spec Parole	Parole	Probation	
Chester	1152	75	195	1422	178	5	40	263	1,908
Philadelphia	6064	132	385	6581	341	13	94	299	7,328
<b>Eastern Region</b>	<b>7,216</b>	<b>207</b>	<b>580</b>	<b>8,003</b>	<b>519</b>	<b>18</b>	<b>134</b>	<b>562</b>	<b>9,236</b>
Allentown	1498	78	379	1955	134	5	49	279	2,422
Harrisburg	1876	141	222	2239	123	1	70	220	2,653
Scranton	415	17	293	725	83	5	33	175	1,021
Williamsport	441	19	76	536	41	10	13	94	694
<b>Central Region</b>	<b>4,230</b>	<b>255</b>	<b>970</b>	<b>5,455</b>	<b>381</b>	<b>21</b>	<b>165</b>	<b>768</b>	<b>6,790</b>
Altoona	408	20	61	489	122	59	7	64	741
Mercer	408	18	42	468	948	818	24	38	2,296
Erie	634	41	37	712	111	36	15	52	926
Pittsburgh	2404	145	76	2625	764	76	67	171	3,703
<b>Western Region</b>	<b>3,854</b>	<b>224</b>	<b>216</b>	<b>4,294</b>	<b>1,945</b>	<b>989</b>	<b>113</b>	<b>325</b>	<b>7,666</b>
<b>Total Cases</b>	<b>15,300</b>	<b>686</b>	<b>1,766</b>	<b>17,752</b>	<b>2,845</b>	<b>1,028</b>	<b>412</b>	<b>1,655</b>	<b>23,692</b>
<b>Percent of Total</b>	<b>65%</b>	<b>3%</b>	<b>7%</b>	<b>75%</b>	<b>12%</b>	<b>4%</b>	<b>2%</b>	<b>7%</b>	<b>100%</b>

**Table 4**  
**CASES BY GRADE OF SUPERVISION**  
**BY REGION AND DISTRICT**  
**April 2002**

District/Region	Reporting						Non-Reporting		Total Cases
	Enhanced	Maximum	Medium	Minimum	Not Classified	Subtotal	Absconder	Detainees	
Chester	172	672	383	214	7	1,448	100	360	1,908
Philadelphia	429	2256	1641	516	93	4,935	825	1568	7,328
<b>Eastern Region</b>	<b>601</b>	<b>2,928</b>	<b>2,024</b>	<b>730</b>	<b>100</b>	<b>6,383</b>	<b>925</b>	<b>1,928</b>	<b>9,236</b>
Allentown	74	751	645	401	7	1,878	187	357	2,422
Harrisburg	105	934	653	353	26	2,071	144	438	2,653
Scranton	22	252	357	182	1	814	26	181	1,021
Williamsport	15	212	214	141	8	590	8	96	694
<b>Central Region</b>	<b>216</b>	<b>2,149</b>	<b>1,869</b>	<b>1,077</b>	<b>42</b>	<b>5,353</b>	<b>365</b>	<b>1,072</b>	<b>6,790</b>
Altoona	36	213	267	113	5	634	23	84	741
Mercer	13	418	744	716	66	1,957	76	263	2,296
Erie	28	289	272	168	28	785	33	108	926
Pittsburgh	196	1171	1032	354	46	2,799	234	670	3,703
<b>Western Region</b>	<b>273</b>	<b>2,091</b>	<b>2,315</b>	<b>1,351</b>	<b>145</b>	<b>6,175</b>	<b>366</b>	<b>1,125</b>	<b>7,666</b>
<b>Total Cases</b>	<b>1,090</b>	<b>7,168</b>	<b>6,208</b>	<b>3,158</b>	<b>287</b>	<b>17,911</b>	<b>1,656</b>	<b>4,125</b>	<b>23,692</b>
<b>Percent of Total</b>	<b>5%</b>	<b>30%</b>	<b>26%</b>	<b>13%</b>	<b>1%</b>	<b>76%</b>	<b>7%</b>	<b>17%</b>	<b>100%</b>

**Table 5**  
**CASES BY SEX AND RACE**  
**BY REGION AND DISTRICT**  
**April 2002**

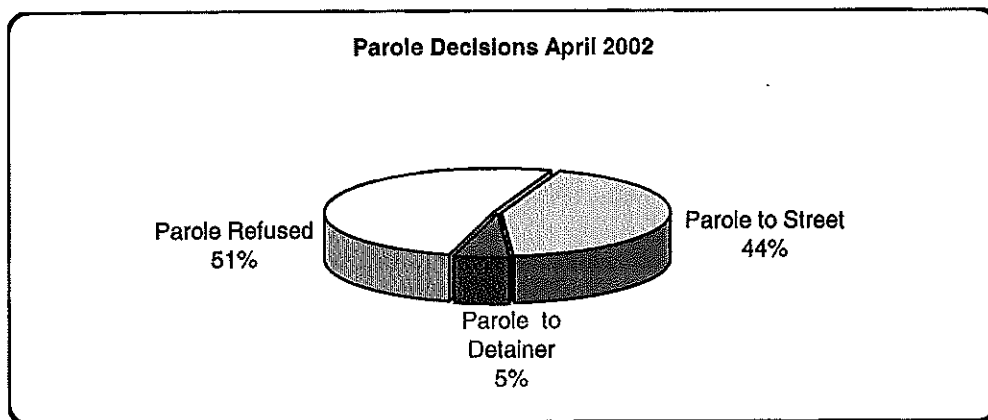
District/Region	Male			Female			Percent Male	Percent Female	Total Cases
	White	Non White	Total	White	Non White	Total			
Chester	697	1,066	1,763	91	54	145	92%	8%	1,908
Philadelphia	844	6,001	6,845	89	394	483	93%	7%	7,328
<b>EASTERN REGION</b>	<b>1,541</b>	<b>7,067</b>	<b>8,608</b>	<b>180</b>	<b>448</b>	<b>628</b>	<b>93%</b>	<b>7%</b>	<b>9,236</b>
Allentown	1,051	1,106	2,157	156	109	265	89%	11%	2,422
Harrisburg	1,191	1,163	2,354	173	126	299	89%	11%	2,653
Scranton	743	157	900	97	24	121	88%	12%	1,021
Williamsport	492	65	557	111	26	137	80%	20%	694
<b>CENTRAL REGION</b>	<b>3,477</b>	<b>2,491</b>	<b>5,968</b>	<b>537</b>	<b>285</b>	<b>822</b>	<b>88%</b>	<b>12%</b>	<b>6,790</b>
Altoona	593	76	669	61	11	72	90%	10%	741
Mercer	1,574	321	1,895	331	70	401	83%	17%	2,296
Erie	547	282	829	58	39	97	90%	10%	926
Pittsburgh	1,525	1,819	3,344	181	178	359	90%	10%	3,703
<b>WESTERN REGION</b>	<b>4,239</b>	<b>2,498</b>	<b>6,737</b>	<b>631</b>	<b>298</b>	<b>929</b>	<b>88%</b>	<b>12%</b>	<b>7,666</b>
<b>TOTAL CASES</b>	<b>9,257</b>	<b>12,056</b>	<b>21,313</b>	<b>1,348</b>	<b>1,031</b>	<b>2,379</b>	<b>90%</b>	<b>10%</b>	<b>23,692</b>

**Table 6**  
**CASES BY EMPLOYMENT STATUS**  
**BY REGION AND DISTRICT**  
**April 2002**

District/Region	Employed	Unemployed	Unemployment Rate	Unable to Work	Unknown	Non Reporting	Total
Chester	788	411	34%	247	2	460	1,908
Philadelphia	2,426	1966	45%	533	10	2,393	7,328
<b>EASTERN REGION</b>	<b>3,214</b>	<b>2,377</b>	<b>43%</b>	<b>780</b>	<b>12</b>	<b>2,853</b>	<b>9,236</b>
Allentown	1,013	509	33%	345	11	544	2,422
Harrisburg	1,386	391	22%	294	0	582	2,653
Scranton	517	168	25%	126	3	207	1,021
Williamsport	364	122	25%	101	3	104	694
<b>CENTRAL REGION</b>	<b>3,280</b>	<b>1,190</b>	<b>27%</b>	<b>866</b>	<b>17</b>	<b>1,437</b>	<b>6,790</b>
Altoona	423	103	20%	104	4	107	741
Mercer	1,095	532	33%	324	6	339	2,296
Erie	411	216	34%	155	3	141	926
Pittsburgh	1,591	731	31%	476	1	904	3,703
<b>WESTERN REGION</b>	<b>3,520</b>	<b>1,582</b>	<b>31%</b>	<b>1,059</b>	<b>14</b>	<b>1,491</b>	<b>7,666</b>
<b>TOTAL CASES</b>	<b>10,014</b>	<b>5,149</b>	<b>34%</b>	<b>2,705</b>	<b>43</b>	<b>5,781</b>	<b>23,692</b>

**Table 7**  
**BOARD DECISIONS**  
**April 2002**

Type of Decision	Total
Parole to Street	639
Parole to Detainer	80
Parole Refused	758
Total Considered	1,477
Percent Granted	49%
Recommitments	563
Refer to Prior Action	195
Assigned by Courts	315
Other Decisions	689
<b>Total Decisions</b>	<b>3,239</b>



**Table 8**  
**HEARINGS AND INTERVIEWS**  
**April 2002**

Type of Decision	Board Members	Hearing Examiners	Total
<b>HEARINGS</b>			
Preliminary	0	40	40
Preliminary/Detention	0	15	15
Violation	0	203	203
Violation/Detention	0	85	85
Detention	0	45	45
Revocation	0	108	108
Revocation/Violation	0	7	7
Probable Cause Out-of State	0	18	18
Panel	58	0	58
<b>Total Hearings</b>	<b>58</b>	<b>521</b>	<b>579</b>
<b>INTERVIEWS</b>			
Parole Minimum	109	655	764
Review	167	539	706
Reparole Review	125	306	431
Victim Input	0	21	21
<b>Total Interviews</b>	<b>401</b>	<b>1,521</b>	<b>1,922</b>

**Table 9**  
**MONTHLY PAROLING DECISIONS**  
**April 2002**

MONTH/YEAR	PAROLE GRANTED	PAROLE REFUSED	TOTAL CONSIDERED	% GRANTED
Apr-01	683	639	1,322	52%
May-01	752	681	1,433	52%
Jun-01	616	620	1,236	50%
Jul-01	595	630	1,225	49%
Aug-01	697	538	1,235	56%
Sep-01	623	560	1,180	53%
Oct-01	817	717	1,534	53%
Nov-01	822	745	1,567	52%
Dec-01	658	564	1,222	54%
Jan-02	728	719	1,447	50%
Feb-02	751	657	1,408	53%
Mar-02	791	776	1,567	50%
Apr-02	719	758	1,477	49%
<b>Monthly Avg Prior 12 Mo</b>	<b>714</b>	<b>664</b>	<b>1,378</b>	<b>52%</b>

