

# COMMONWEALTH OF PENNSYLVANIA

## Board of Probation and Parole

### MONTHLY STATISTICAL REPORT

May 2001



**Tom Ridge**  
Governor

William F. Ward  
Chairman

Allen Castor  
Member

Benjamin Martinez  
Member

Barbara K. Descher  
Member

Nicholas P. Muller  
Member

Richard A. Kipp  
Member

Sean R. Ryan  
Member

Gary R. Lucht  
Member

Michael M. Webster  
Member

Mary A. Achilles  
Victim Advocate

pbpp  
AN EQUAL OPPORTUNITY EMPLOYER

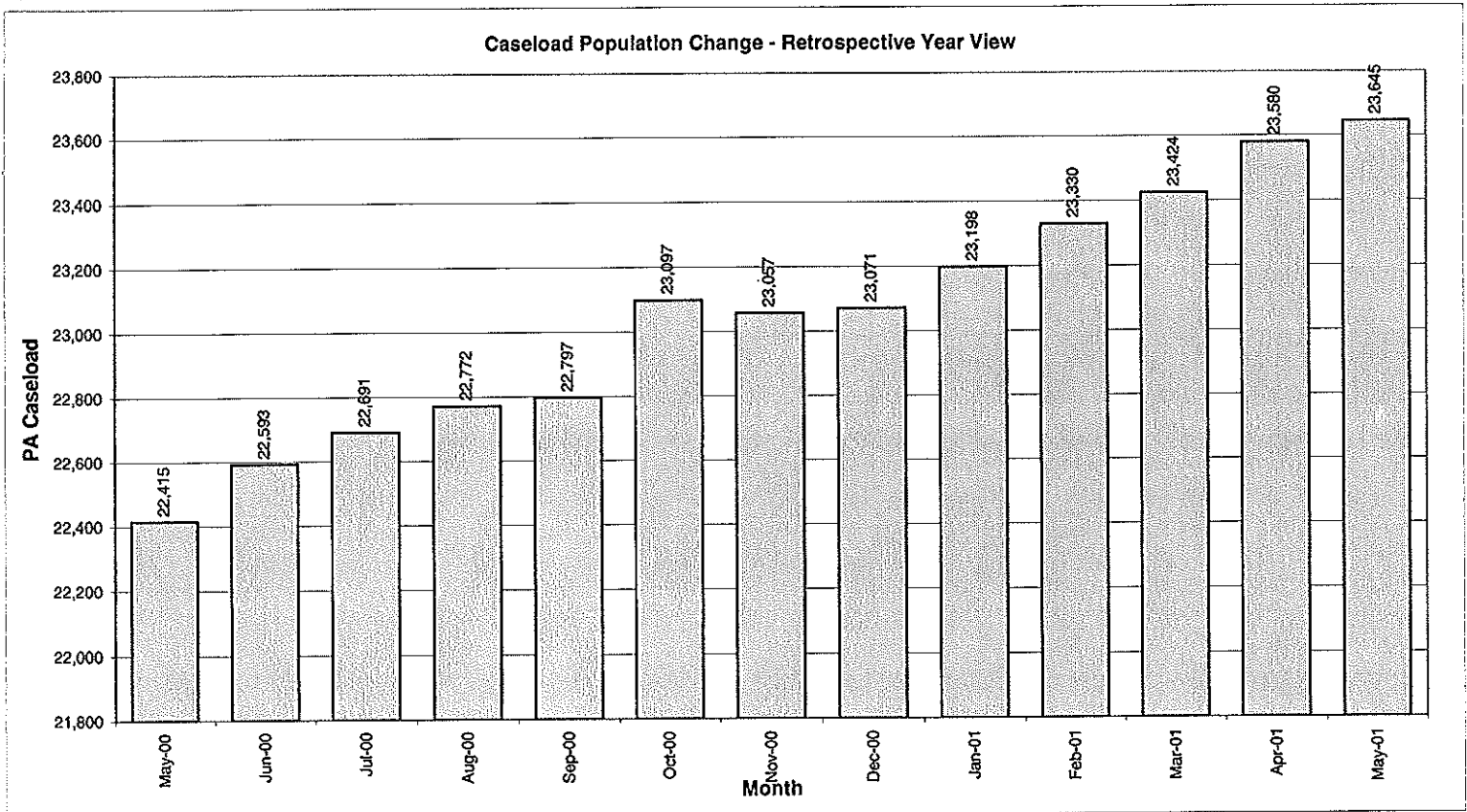


**Table 1  
CASELOAD, WORKLOAD, AND POPULATION CHANGES BY DISTRICT  
May 2001**

Type of Cases	Beginning FY Cases 7/1/00	Current Month Cases	Fiscal YTD Index	Additions	Deletions		Number of Agents	Average Caseload	Average Workload	Total Workload
					Recommits/ Revocations	Other Deletions				
CHESTER	1,865	1,937	104	51	33	32	29	67	135	3,904
PHILADELPHIA	6,867	7,286	106	276	104	120*	105	69	135	14,142
<b>EASTERN REGION</b>	<b>8,732</b>	<b>9,223</b>	<b>106</b>	<b>327</b>	<b>137</b>	<b>152</b>	<b>134</b>	<b>69</b>	<b>135</b>	<b>18,046</b>
ALLENTOWN	2,223	2,395	108	109	69	69	33	73	139	4,574
HARRISBURG	2,540	2,598	102	88	49	60	36	72	170	6,108
SCRANTON	1,050	1,053	100	38	18	19	16	66	154	2,466
WILLIAMSPORT	641	657	102	24	10	19	12	55	166	1,997
<b>CENTRAL REGION</b>	<b>6,454</b>	<b>6,703</b>	<b>104</b>	<b>259</b>	<b>146</b>	<b>167</b>	<b>97</b>	<b>69</b>	<b>156</b>	<b>15,145</b>
ALTOONA	766	770	101	23	5	11	15	51	140	2,107
MERCER	1,897	2,219	117	184	25	86	29	77	203	5,897
ERIE	894	930	104	43	16	19	15	62	125	1,878
PITTSBURGH	3,850	3,800	99	137	87	57	56	68	141	7,877
<b>WESTERN REGION</b>	<b>7,407</b>	<b>7,719</b>	<b>104</b>	<b>387</b>	<b>133</b>	<b>173</b>	<b>115</b>	<b>67</b>	<b>154</b>	<b>17,759</b>
<b>TOTAL CASES SUPERVISED</b>	<b>22,593</b>	<b>23,645</b>	<b>105</b>	<b>973</b>	<b>416</b>	<b>492</b>	<b>346</b>	<b>68</b>	<b>147</b>	<b>50,950</b>

\*Select program accounting adjustments were made.

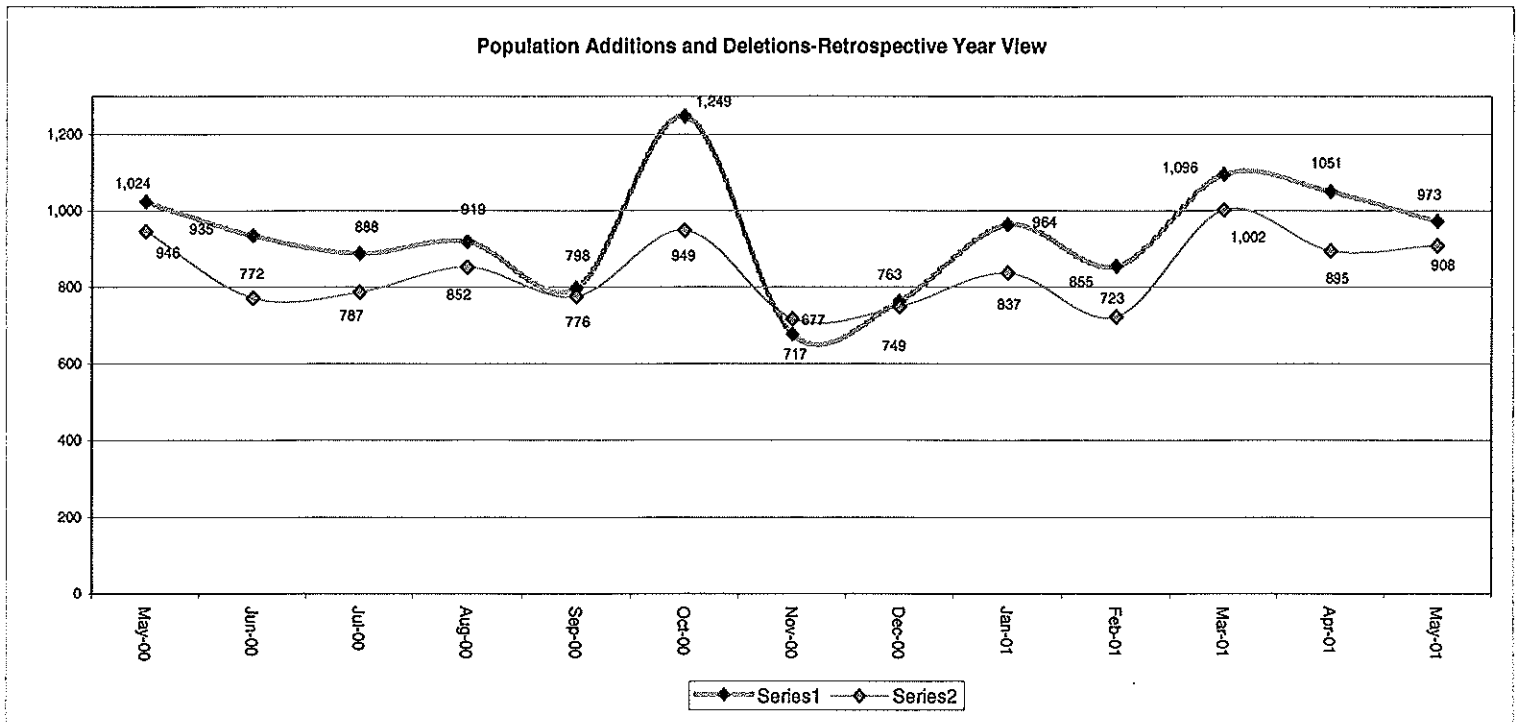
Pa Cases in Other States	2,314	2,300	99	58	15	48*
--------------------------	-------	-------	----	----	----	-----



**Table 2**  
**CASE ADDITIONS AND DELETIONS FOR SUPERVISED CASELOAD IN PENNSYLVANIA**  
**May 2001**

Case Additions and Deletions	PAROLE	REPAROLE	SPECIAL COUNTY PROBATION	SPECIAL COUNTY PAROLE	OTHER STATES' PAROLE	OTHER STATES' PROBATION	MONTHLY TOTAL	FISCAL YTD TOTAL
<b>ADDITIONS</b>	537	128	121	97	13	77	973	10,240
<b>DELETIONS-RECOMMITMENTS</b>								
<b>Convicted Parole Violator</b>								
State Corrections	57	16	1	3	0	0	77	779
County Corrections	11	1	8	6	0	0	26	231
Other States Cases	0	0	0	0	0	0	0	20
<b>Total Convicted Parole Violator</b>	68	17	9	9	0	0	103	1,030
<b>Technical Parole Violator</b>								
State Corrections	170	69	3	1	0	0	243	2,370
County Corrections	38	5	17	10	0	0	70	553
Other States Cases	0	0	0	0	0	0	0	51
<b>Total Technical Parole Violator</b>	208	74	20	11	0	0	313	2,974
<b>TOTAL RECOMMITMENTS</b>	276	91	29	20	0	0	416	4,004
Deletion Maximum Discharge	189	44	52	40	6	44	375	1,635
Deletion Death	14	4	3	1	1	2	25	163
Deletion Other	15*	4	31	6	2	34	92	872
<b>TOTAL DELETIONS</b>	494	143	115	67	9	80	908	6,674

\*Select program accounting adjustments were made.



**Table 3**  
**CASES BY ORIGINATING JURISDICTION**  
**BY REGION AND DISTRICT**  
**May 2001**

District/Region	PA Parole State Sentence				County		Other States		Total Cases
	from DOC	Boot Camp	Cnty Prisons	Subtotal	Spec Prob	Spec Parole	Parole	Probation	
Chester	1,255	74	196	1,525	132	8	31	241	1,937
Philadelphia	6,157	95	378	6,630	275	22	93	266	7,286
<b>Eastern Region</b>	<b>7,412</b>	<b>169</b>	<b>574</b>	<b>8,155</b>	<b>407</b>	<b>30</b>	<b>124</b>	<b>507</b>	<b>9,223</b>
Allentown	1,530	38	394	1,962	127	3	44	259	2,395
Harrisburg	1,858	109	218	2,185	106	7	65	235	2,598
Scranton	408	20	334	762	78	5	33	175	1,053
Williamsport	440	11	80	531	43	8	11	64	657
<b>Central Region</b>	<b>4,236</b>	<b>178</b>	<b>1,026</b>	<b>5,440</b>	<b>354</b>	<b>23</b>	<b>153</b>	<b>733</b>	<b>6,703</b>
Altoona	410	22	73	505	114	87	12	52	770
Mercer	422	10	54	486	867	796	19	51	2,219
Erie	621	29	53	703	120	34	13	60	930
Pittsburgh	2,415	154	79	2,648	800	106	63	183	3,800
<b>Western Region</b>	<b>3,868</b>	<b>215</b>	<b>259</b>	<b>4,342</b>	<b>1,901</b>	<b>1,023</b>	<b>107</b>	<b>346</b>	<b>7,719</b>
<b>Total Cases</b>	<b>15,516</b>	<b>562</b>	<b>1,859</b>	<b>17,937</b>	<b>2,662</b>	<b>1,076</b>	<b>384</b>	<b>1,586</b>	<b>23,645</b>
<b>Percent of Total</b>	<b>66%</b>	<b>2%</b>	<b>8%</b>	<b>76%</b>	<b>11%</b>	<b>5%</b>	<b>2%</b>	<b>7%</b>	<b>100%</b>

**Table 4**  
**CASES BY GRADE OF SUPERVISION**  
**BY REGION AND DISTRICT**  
**May 2001**

District/Region	Reporting						Non-Reporting		Total Cases
	Enhanced	Maximum	Medium	Minimum	Not Classified	Subtotal	Absconder	Detainees	
Chester	144	684	374	248	3	1,453	94	390	1,937
Philadelphia	475	2,352	1,587	556	142	5,112	753	1,421	7,286
<b>Eastern Region</b>	<b>619</b>	<b>3,036</b>	<b>1,961</b>	<b>804</b>	<b>145</b>	<b>6,565</b>	<b>847</b>	<b>1,811</b>	<b>9,223</b>
Allentown	109	727	626	379	43	1,884	171	340	2,395
Harrisburg	56	840	705	412	41	2,054	132	412	2,598
Scranton	18	227	398	187	0	830	32	191	1,053
Williamsport	10	173	212	166	6	567	13	77	657
<b>Central Region</b>	<b>193</b>	<b>1,967</b>	<b>1,941</b>	<b>1,144</b>	<b>90</b>	<b>5,335</b>	<b>348</b>	<b>1,020</b>	<b>6,703</b>
Altoona	31	244	248	112	16	651	27	92	770
Mercer	12	513	767	622	77	1,991	79	149	2,219
Erie	6	290	281	172	30	779	33	118	930
Pittsburgh	201	1,238	1,040	354	33	2,866	228	706	3,800
<b>Western Region</b>	<b>250</b>	<b>2,285</b>	<b>2,336</b>	<b>1,260</b>	<b>156</b>	<b>6,287</b>	<b>367</b>	<b>1,065</b>	<b>7,719</b>
<b>Total Cases</b>	<b>1,062</b>	<b>7,288</b>	<b>6,238</b>	<b>3,208</b>	<b>391</b>	<b>18,187</b>	<b>1,562</b>	<b>3,896</b>	<b>23,645</b>
<b>Percent of Total</b>	<b>4%</b>	<b>31%</b>	<b>26%</b>	<b>14%</b>	<b>2%</b>	<b>77%</b>	<b>7%</b>	<b>16%</b>	<b>100%</b>

**Table 5**  
**CASES BY SEX AND RACE**  
**BY REGION AND DISTRICT**  
**May 2001**

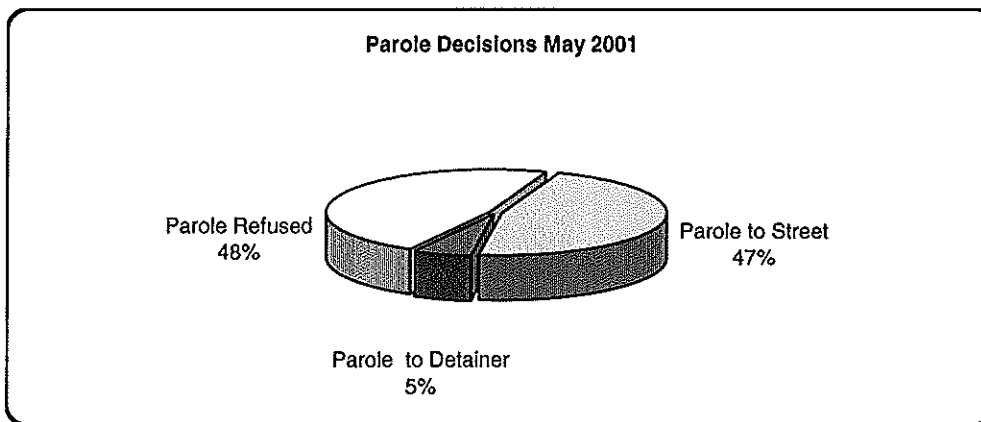
District/Region	Male			Female			Percent Male	Percent Female	Total Cases
	White	Non White	Total	White	Non White	Total			
Chester	729	1,064	1,793	82	63	145	93%	7%	1,938
Philadelphia	922	5,900	6,822	75	389	464	94%	6%	7,286
<b>EASTERN REGION</b>	<b>1,651</b>	<b>6,964</b>	<b>8,615</b>	<b>157</b>	<b>452</b>	<b>609</b>	<b>93%</b>	<b>7%</b>	<b>9,224</b>
Allentown	1,055	1,082	2,137	144	114	258	89%	11%	2,395
Harrisburg	1,172	1,155	2,327	150	121	271	90%	10%	2,598
Scranton	785	153	938	96	19	115	89%	11%	1,053
Williamsport	461	73	534	96	27	123	81%	19%	657
<b>CENTRAL REGION</b>	<b>3,473</b>	<b>2,463</b>	<b>5,936</b>	<b>486</b>	<b>281</b>	<b>767</b>	<b>89%</b>	<b>11%</b>	<b>6,703</b>
Altoona	597	80	677	84	9	93	88%	12%	770
Mercer	1,497	331	1,828	332	58	390	82%	18%	2,218
Erie	544	270	814	80	36	116	88%	12%	930
Pittsburgh	1,524	1,887	3,411	178	211	389	90%	10%	3,800
<b>WESTERN REGION</b>	<b>4,162</b>	<b>2,568</b>	<b>6,730</b>	<b>674</b>	<b>314</b>	<b>988</b>	<b>87%</b>	<b>13%</b>	<b>7,718</b>
<b>TOTAL CASES</b>	<b>9,286</b>	<b>11,995</b>	<b>21,281</b>	<b>1,317</b>	<b>1,047</b>	<b>2,364</b>	<b>90%</b>	<b>10%</b>	<b>23,645</b>

**Table 6**  
**CASES BY EMPLOYMENT STATUS**  
**BY REGION AND DISTRICT**  
**May 2001**

District/Region	Employed	Unemployed	Unemployment Rate	Unable to Work	Unknown	Non Reporting	Total
Chester	949	306	24%	198	0	484	1,937
Philadelphia	2,687	1,892	41%	524	9	2,174	7,286
<b>EASTERN REGION</b>	<b>3,636</b>	<b>2,198</b>	<b>38%</b>	<b>722</b>	<b>9</b>	<b>2,658</b>	<b>9,223</b>
Allentown	1,152	393	25%	338	1	511	2,395
Harrisburg	1,242	582	32%	228	2	544	2,598
Scranton	577	135	19%	117	1	223	1,053
Williamsport	379	88	19%	92	8	90	657
<b>CENTRAL REGION</b>	<b>3,350</b>	<b>1,198</b>	<b>26%</b>	<b>775</b>	<b>12</b>	<b>1,368</b>	<b>6,703</b>
Altoona	438	89	17%	105	19	119	770
Mercer	1,091	651	37%	213	36	228	2,219
Erie	461	199	30%	110	9	151	930
Pittsburgh	1,704	768	31%	389	5	934	3,800
<b>WESTERN REGION</b>	<b>3,694</b>	<b>1,707</b>	<b>32%</b>	<b>817</b>	<b>69</b>	<b>1,432</b>	<b>7,719</b>
<b>TOTAL CASES</b>	<b>10,680</b>	<b>5,103</b>	<b>32%</b>	<b>2,314</b>	<b>90</b>	<b>5,458</b>	<b>23,645</b>

**Table 7  
BOARD DECISIONS  
May 2001**

Type of Decision	Total
Parole to Street	669
Parole to Detainer	83
Parole Refused	681
<b>Total Considered</b>	<b>1,433</b>
<b>Percent Granted</b>	<b>52%</b>
Recommitments	433
Refer to Prior Action	125
Assigned by Courts	368
Other Decisions	594
<b>Total Decisions</b>	<b>2,953</b>



**Table 8  
HEARINGS AND INTERVIEWS  
May 2001**

Type of Decision	Board Members	Hearing Examiners	Total
<b>HEARINGS</b>			
Preliminary	0	29	29
Preliminary/Detention	0	22	22
Violation	0	247	247
Violation/Detention	0	90	90
Detention	0	35	35
Revocation	0	99	99
Revocation/Violation	0	18	18
Probable Cause Out-of State	0	14	14
Panel	41	0	41
<b>Total Hearings</b>	<b>41</b>	<b>554</b>	<b>595</b>
<b>INTERVIEWS</b>			
Parole Minimum	146	618	764
Review	295	418	713
Reparole Review	116	249	365
Victim Input	0	19	19
<b>Total Interviews</b>	<b>557</b>	<b>1,304</b>	<b>1,861</b>

**Table 9**  
**MONTHLY PAROLING DECISIONS**  
**May 2001**

MONTH/YEAR	PAROLE GRANTED	PAROLE REFUSED	TOTAL CONSIDERED	% GRANTED
May-00	694	757	1,451	48%
Jun-00	723	750	1,473	49%
Jul-00	662	683	1,345	49%
Aug-00	833	931	1,764	47%
Sep-00	657	705	1,362	48%
Oct-00	708	717	1,425	50%
Nov-00	718	599	1,317	55%
Dec-00	792	705	1,497	53%
Jan-01	768	740	1,508	51%
Feb-01	803	615	1,418	57%
Mar-01	804	756	1,560	52%
Apr-01	683	639	1,322	52%
May-01	752	681	1,433	52%
<b>Monthly Avg Prior 12 Mo</b>	<b>742</b>	<b>710</b>	<b>1,452</b>	<b>51%</b>

