

COMMONWEALTH OF PENNSYLVANIA

Board of Probation and Parole

MONTHLY STATISTICAL REPORT

April 2001



Tom Ridge
Governor

William F. Ward
Chairman

Allen Castor
Member

Benjamin Martinez
Member

Barbara K. Descher
Member

Nicholas P. Muller
Member

Richard A. Kipp
Member

Sean R. Ryan
Member

Gary R. Lucht
Member

Michael M. Webster
Member

Mary A. Achilles
Victim Advocate

pbpp
AN EQUAL OPPORTUNITY EMPLOYER

**Table 1
CASELOAD, WORKLOAD, AND POPULATION CHANGES BY DISTRICT
April 2001**

Type of Cases	Beginning FY Cases 7/1/00	Current Month Cases	Fiscal YTD Index	Additions	Deletions		Number of Agents	Average Caseload	Average Workload	Total Workload
					Recommits/ Revocations	Other Deletions				
CHESTER	1,865	1,954	105	82	26	67	30	65	120	3,595
PHILADELPHIA	6,867	7,230	105	330	77	126	106	68	128	13,548
EASTERN REGION	8,732	9,184	105	412	103	193	136	68	126	17,143
ALLENTOWN	2,223	2,437	110	126	35	34	34	72	133	4,515
HARRISBURG	2,540	2,615	103	111	35	37	38	69	160	6,089
SCRANTON	1,050	1,051	100	38	15	23	17	62	142	2,416
WILLIAMSPORT	641	648	101	18	8	21	12	54	154	1,852
CENTRAL REGION	6,454	6,751	105	293	93	115	101	67	147	14,872
ALTOONA	766	760	99	31	13	16	14	54	146	2,042
MERCER	1,897	2,144	113	149	50	138	29	74	177	5,138
ERIE	894	922	103	35	13	29	16	58	118	1,882
PITTSBURGH	3,850	3,819	99	131	55	77	57	67	135	7,695
WESTERN REGION	7,407	7,645	103	346	131	260	116	66	144	16,757
TOTAL CASES SUPERVISED	22,593	23,580	104	1,051	327	568	353	67	138	48,772

*Select program accounting adjustments were made.

Pa Cases in Other States	2,314	2,305	100	43	15	122*
--------------------------	-------	-------	-----	----	----	------

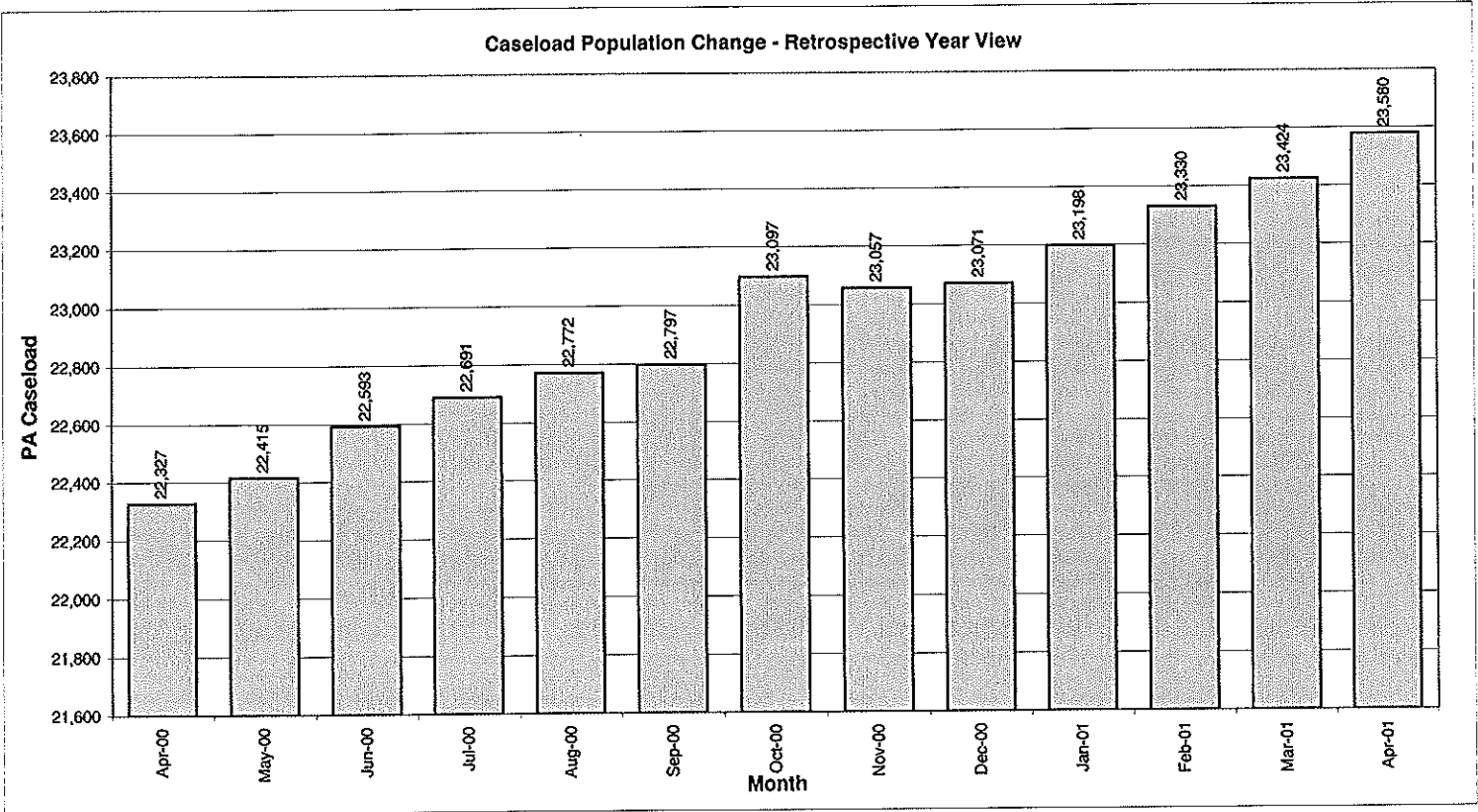


Table 2
CASE ADDITIONS AND DELETIONS FOR SUPERVISED CASELOAD IN PENNSYLVANIA
April 2001

Case Additions and Deletions	PAROLE	REPAROLE	SPECIAL COUNTY PROBATION	SPECIAL COUNTY PAROLE	OTHER STATES' PAROLE	OTHER STATES' PROBATION	MONTHLY TOTAL	FISCAL YTD TOTAL
ADDITIONS	629	134	103	82	15	88	1,051	9,267
DELETIONS-RECOMMITMENTS								
Convicted Parole Violator								
State Corrections	55	13	1	1	0	0	70	702
County Corrections	3	1	14	5	0	0	23	205
Other States Cases	0	0	0	0	0	1	1	20
Total Convicted Parole Violator	58	14	15	6	0	1	94	927
Technical Parole Violator								
State Corrections	123	49	0	0	0	0	172	2,127
County Corrections	13	3	28	14	0	0	58	483
Other States Cases	0	0	0	0	0	3	3	51
Total Technical Parole Violator	136	52	28	14	0	3	233	2,661
TOTAL RECOMMITMENTS	194	66	43	20	0	4	327	3,588
Deletion Maximum Discharge	214	32	84	62	10	48	450	1,260
Deletion Death	13	4	4	2	0	0	23	138
Deletion Other	13	1	30	10	7	34	95	780
TOTAL DELETIONS	434	103	161	94	17	86	895	5,766

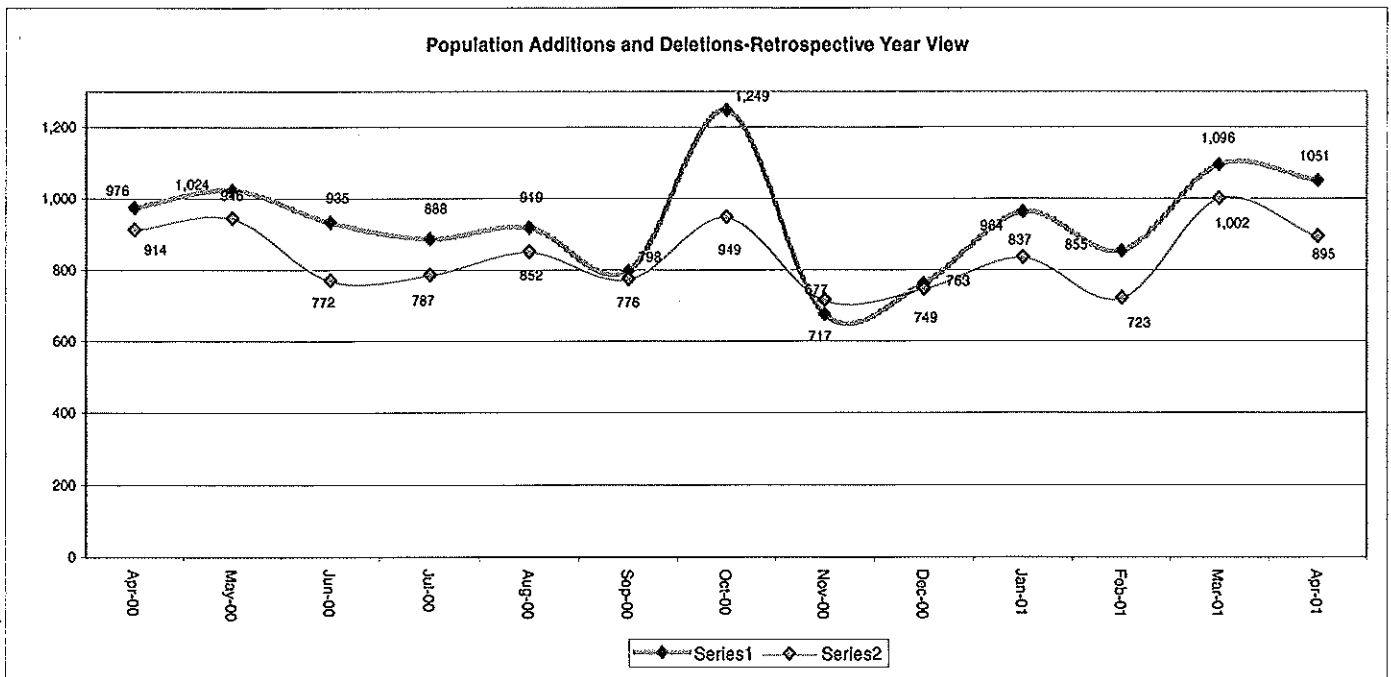


Table 3
CASES BY ORIGINATING JURISDICTION
BY REGION AND DISTRICT
April 2001

District/Region	PA Parole State Sentence				County		Other States		Total Cases
	from DOC	Boot Camp	Cnty Prisons	Subtotal	Spec Prob	Spec Parole	Parole	Probation	
Chester	1,262	79	203	1,544	131	8	31	240	1,954
Philadelphia	6,139	54	387	6,580	268	23	93	266	7,230
Eastern Region	7,401	133	590	8,124	399	31	124	506	9,184
Allentown	1,558	33	409	2,000	132	4	43	258	2,437
Harrisburg	1,865	111	225	2,201	107	7	63	237	2,615
Scranton	414	21	333	768	76	4	32	171	1,051
Williamsport	432	10	82	524	42	7	11	64	648
Central Region	4,269	175	1,049	5,493	357	22	149	730	6,751
Altoona	407	22	73	502	108	85	11	54	760
Mercer	419	10	52	481	842	755	19	47	2,144
Erie	609	29	54	692	118	39	12	61	922
Pittsburgh	2,408	163	85	2,656	810	108	59	186	3,819
Western Region	3,843	224	264	4,331	1,878	987	101	348	7,645
Total Cases	15,513	532	1,903	17,948	2,634	1,040	374	1,584	23,580
Percent of Total	66%	2%	8%	76%	11%	4%	2%	7%	100%

Table 4
CASES BY GRADE OF SUPERVISION
BY REGION AND DISTRICT
April 2001

District/Region	Reporting						Non-Reporting		Total Cases
	Enhanced	Maximum	Medium	Minimum	Not Classified	Subtotal	Absconder	Detainees	
Chester	152	686	387	238	1	1,464	105	385	1,954
Philadelphia	470	2,397	1,546	551	165	5,129	753	1,348	7,230
Eastern Region	622	3,083	1,933	789	166	6,593	858	1,733	9,184
Allentown	101	736	631	382	66	1,916	172	349	2,437
Harrisburg	58	828	697	416	69	2,068	127	420	2,615
Scranton	15	242	401	171	3	832	31	188	1,051
Williamsport	8	177	195	166	7	553	10	85	648
Central Region	182	1,983	1,924	1,135	145	5,369	340	1,042	6,751
Altoona	38	233	236	108	28	643	25	92	760
Mercer	12	463	616	625	226	1,942	81	121	2,144
Erie	6	279	291	173	31	780	35	107	922
Pittsburgh	215	1,227	1,040	342	31	2,855	226	738	3,819
Western Region	271	2,202	2,183	1,248	316	6,220	367	1,058	7,645
Total Cases	1,075	7,268	6,040	3,172	627	18,182	1,565	3,833	23,580
Percent of Total	5%	31%	26%	13%	3%	77%	7%	16%	100%

Table 5
CASES BY SEX AND RACE
BY REGION AND DISTRICT
April 2001

District/Region	Male			Female			Percent Male	Percent Female	Total Cases
	White	Non White	Total	White	Non White	Total			
Chester	737	1,073	1,810	82	62	144	29%	6%	1,954
Philadelphia	909	5,853	6,762	77	391	468	90%	10%	7,230
EASTERN REGION	1,646	6,926	8,572	159	453	612	89%	7%	9,184
Allentown	1,085	1,091	2,176	143	118	261	89%	11%	2,437
Harrisburg	1,182	1,157	2,339	152	124	276	89%	11%	2,615
Scranton	784	151	935	97	19	116	89%	11%	1,051
Williamsport	459	71	530	92	26	118	82%	18%	648
CENTRAL REGION	3,510	2,470	5,980	484	287	771	89%	11%	6,751
Altoona	585	87	672	81	7	88	88%	12%	760
Mercer	1,436	326	1,762	325	57	382	82%	18%	2,144
Erie	549	261	810	76	36	112	88%	12%	922
Pittsburgh	1,540	1,894	3,434	179	206	385	90%	10%	3,819
WESTERN REGION	4,110	2,568	6,678	661	306	967	87%	13%	7,645
TOTAL CASES	9,266	11,964	21,230	1,304	1,046	2,350	90%	10%	23,580

Table 6
CASES BY EMPLOYMENT STATUS
BY REGION AND DISTRICT
April 2001

District/Region	Employed	Unemployed	Unemployment Rate	Unable to Work	Unknown	Non Reporting	Total
Chester	964	292	23%	206	2	490	1,954
Philadelphia	2,698	1,910	41%	509	12	2,101	7,230
EASTERN REGION	3,662	2,202	38%	715	14	2,591	9,184
Allentown	1,157	408	26%	348	3	521	2,437
Harrisburg	1,188	637	35%	224	19	547	2,615
Scranton	568	146	20%	117	1	219	1,051
Williamsport	371	86	19%	73	23	95	648
CENTRAL REGION	3,284	1,277	28%	762	46	1,382	6,751
Altoona	423	81	16%	106	33	117	760
Mercer	1,040	613	37%	203	86	202	2,144
Erie	462	191	29%	113	14	142	922
Pittsburgh	1,686	764	31%	397	8	964	3,819
WESTERN REGION	3,611	1,649	31%	819	141	1,425	7,645
TOTAL CASES	10,557	5,128	33%	2,296	201	5,398	23,580

Table 7
BOARD DECISIONS
April 2001

Type of Decision	Total
Parole to Street	611
Parole to Detainer	72
Parole Refused	639
Total Considered	1,322
Percent Granted	52%
Recommitments	309
Refer to Prior Action	90
Assigned by Courts	352
Other Decisions	617
Total Decisions	2,690

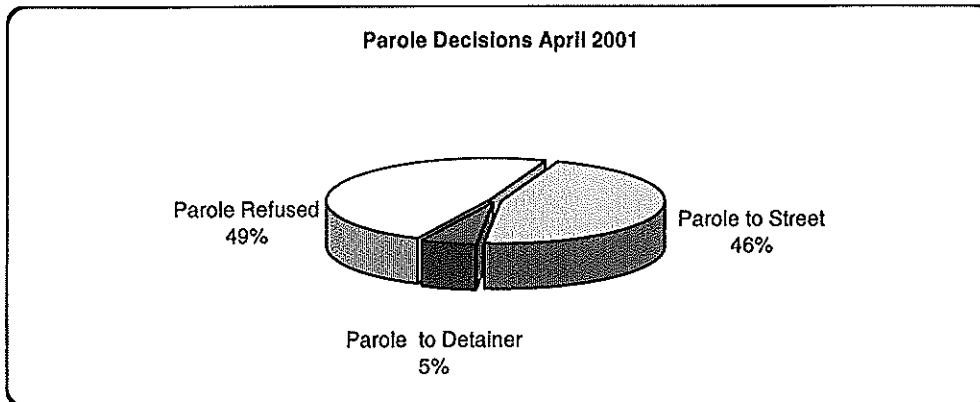


Table 8
HEARINGS AND INTERVIEWS
April 2001

Type of Decision	Board Members	Hearing Examiners	Total
HEARINGS			
Preliminary	0	56	56
Preliminary/Detention	0	19	19
Violation	0	247	247
Violation/Detention	0	45	45
Detention	0	37	37
Revocation	0	93	93
Revocation/Violation	0	13	13
Probable Cause Out-of State	0	15	15
Panel	40	0	40
Total Hearings	40	525	565
INTERVIEWS			
Parole Minimum	142	653	795
Review	348	497	845
Reparole Review	138	244	382
Victim Input	0	18	18
Total Interviews	628	1,412	2,040

Table 9
MONTHLY PAROLING DECISIONS
April 2001

MONTH/YEAR	PAROLE GRANTED	PAROLE REFUSED	TOTAL CONSIDERED	% GRANTED
Apr-00	699	767	1,466	48%
May-00	694	757	1,451	48%
Jun-00	723	750	1,473	49%
Jul-00	662	683	1,345	49%
Aug-00	833	931	1,764	47%
Sep-00	657	705	1,362	48%
Oct-00	708	717	1,425	50%
Nov-00	718	599	1,317	55%
Dec-00	792	705	1,497	53%
Jan-01	768	740	1,508	51%
Feb-01	803	615	1,418	57%
Mar-01	804	756	1,560	52%
Apr-01	683	639	1,322	52%
Monthly Avg Prior 12 Mo	737	716	1,454	51%

