

# COMMONWEALTH OF PENNSYLVANIA

## Board of Probation and Parole

### MONTHLY PROGRAM REPORT

October 2014



**Tom Corbett**  
Governor

Lloyd A. White  
Chairman

Edward L. Burke  
Member

Leslie M. Grey  
Member

Craig R. McKay  
Member

John R. Tuttle  
Member

Michael L. Green  
Member

Jeffrey R. Imboden  
Member

Michael C. Potteiger  
Member

Jennifer Storm  
Victim Advocate

**PBPP**  
AN EQUAL OPPORTUNITY EMPLOYER

Published December 1, 2014 by the PBPP Statistical Reporting and Evidence-Based Program Evaluation Office

Copyright © 2014 Commonwealth of Pennsylvania, Board of Probation and Parole. All rights reserved.

**Table 1**  
**WORKLOAD AND POPULATION CHANGES BY REGION / DISTRICT**  
**October 2014**

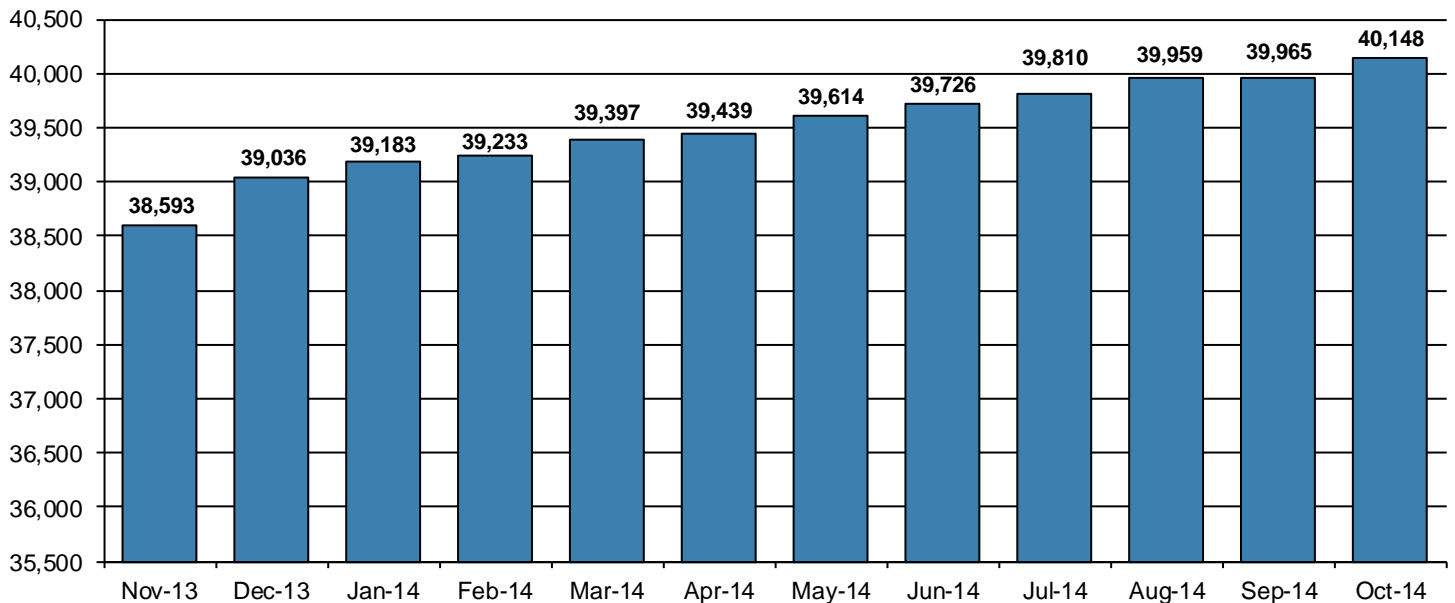
REGION / DISTRICT	Beginning Fiscal Yr <sup>1</sup> July 2014	Current Month Population	Fiscal YTD Index	Additions	Deletions		Number of Agents <sup>2</sup>	Average Workload <sup>3</sup>
					Recommits/ Revocations	Other Deletions		
CHESTER	3,172	3,231	102	90	35	69	41	137
PHILADELPHIA	11,285	11,475	102	384	134	192	139	146
<b>EASTERN REGION</b>	<b>14,457</b>	<b>14,706</b>	<b>102</b>	<b>474</b>	<b>169</b>	<b>261</b>	<b>180</b>	<b>144</b>
ALLENTOWN	4,847	4,846	100	236	58	84	62	154
HARRISBURG	5,536	5,661	102	222	70	92	73	154
SCRANTON	1,910	1,930	101	71	30	53	30	133
WILLIAMSPORT	1,195	1,242	104	35	13	12	16	148
<b>CENTRAL REGION</b>	<b>13,488</b>	<b>13,679</b>	<b>101</b>	<b>564</b>	<b>171</b>	<b>241</b>	<b>181</b>	<b>150</b>
ALTOONA	1,605	1,592	99	46	32	36	23	148
MERCER	3,270	3,196	98	201	51	143	45	151
ERIE	1,766	1,786	101	64	40	39	25	151
PITTSBURGH	5,140	5,189	101	207	95	90	72	146
<b>WESTERN REGION</b>	<b>11,781</b>	<b>11,763</b>	<b>100</b>	<b>518</b>	<b>218</b>	<b>308</b>	<b>165</b>	<b>148</b>
<b>TOTAL Supervised</b>	<b>39,726</b>	<b>40,148</b>	<b>101</b>	<b>1,556</b>	<b>558</b>	<b>810</b>	<b>526</b>	<b>147</b>

<sup>1</sup> effective June 30<sup>2</sup> Filled agent positions

PA Offenders in Other States	<b>3,245</b>	<b>3,298</b>	<b>102</b>	<b>81</b>	<b>5</b>	<b>29</b>
------------------------------	--------------	--------------	------------	-----------	----------	-----------

<sup>3</sup> Workload is a measure of the expected hours per month an agent's caseload and other duties require. An agent's available hours is 131.75.

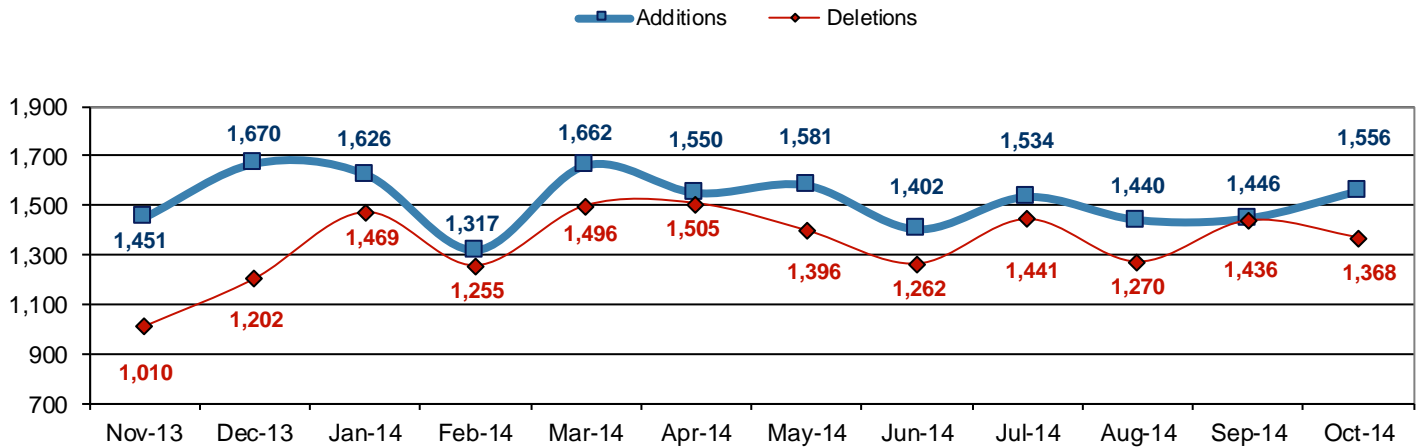
### Population - Retrospective Year View



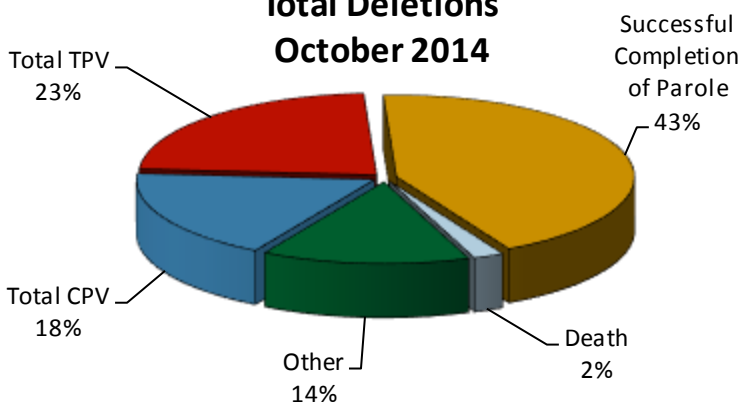
**Table 2  
SUPERVISED POPULATION ADDITIONS AND DELETIONS  
October 2014**

Population Additions and Deletions	Parole	Reparole	Special County Probation	Special County Parole	Other States' Probation	Other States' Parole	Monthly Total	Fiscal YTD Total
<b>ADDITIONS</b>	836	324	164	94	119	19	1,556	5,976
<b>DELETIONS-RECOMMITMENTS</b>								
<i>Convicted Parole Violator</i>								
State Corrections	142	43	4	1	0	0	190	791
County Corrections	6	6	35	7	0	0	54	168
Other States	0	0	0	0	0	0	0	4
<i>Total Convicted Parole Violator</i>	148	49	39	8	0	0	244	963
<i>Technical Parole Violator</i>								
State Corrections	169	78	1	0	0	0	248	1,090
County Corrections	3	15	32	15	0	0	65	237
Other States	0	0	0	0	1	0	1	6
<i>Total Technical Parole Violator</i>	172	93	33	15	1	0	314	1,333
<b>TOTAL RECOMMITMENTS</b>	320	142	72	23	1	0	558	2,296
Deletion Successful Completion	276	85	138	45	35	10	589	2,313
Deletion Death	11	6	7	3	1	0	28	130
Deletion Other	14	3	70	7	81	18	193	776
<b>TOTAL DELETIONS</b>	621	236	287	78	118	28	1,368	5,515

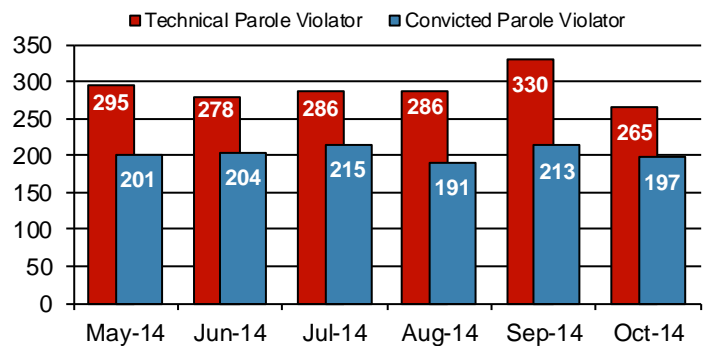
**Population Additions & Deletions-Retrospective Year View**



**Total Deletions  
October 2014**



**State Sentence Parole Revocations\***

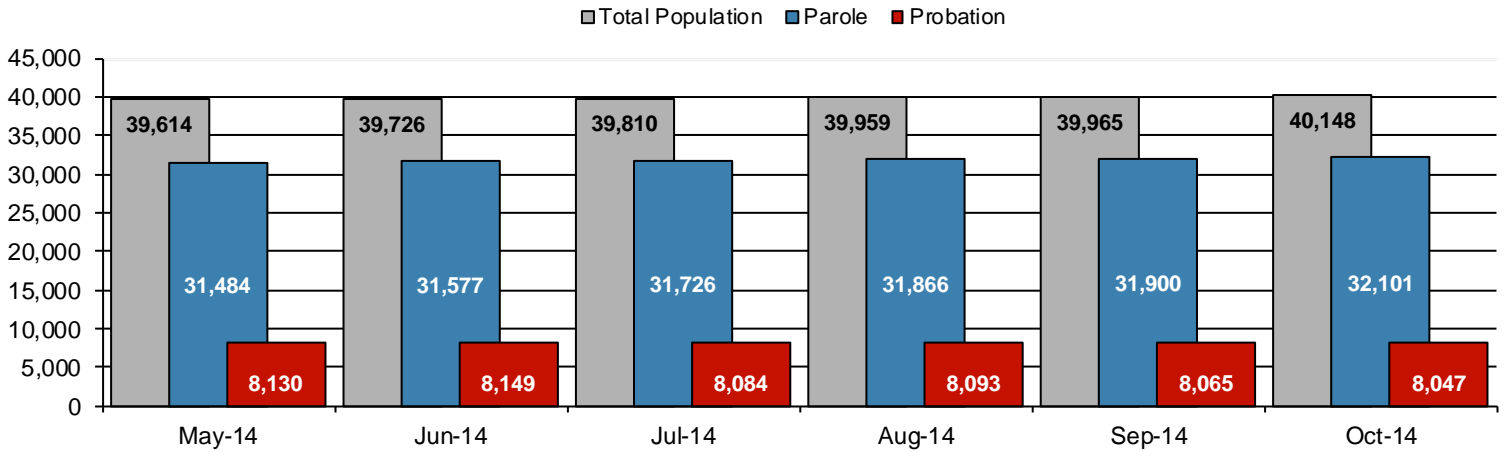


\* These revocations represent field case closure records and are dependent on case processing.

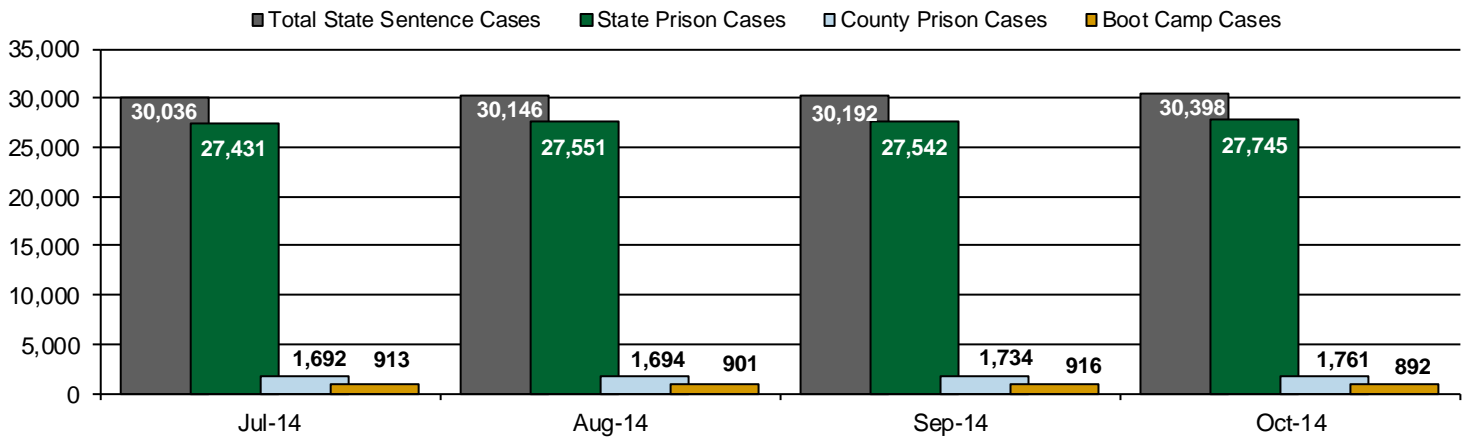
**Table 3**  
**SUPERVISED POPULATION BY ORIGINATING JURISDICTION and REGION / DISTRICT**  
**October 2014**

Region / District	PA Parole State Sentence				County		Other States		Total Population
	State Prisons	Boot Camp	County Prisons	Subtotal	Special Probation	Special Parole	Probation	Parole	
Chester	2,084	41	111	2,236	664	23	260	48	3,231
Philadelphia	8,938	195	252	9,385	1,410	6	529	145	11,475
<b>Eastern Region</b>	<b>11,022</b>	<b>236</b>	<b>363</b>	<b>11,621</b>	<b>2,074</b>	<b>29</b>	<b>789</b>	<b>193</b>	<b>14,706</b>
Allentown	3,415	111	382	3,908	480	2	368	88	4,846
Harrisburg	4,531	212	254	4,997	312	1	279	72	5,661
Scranton	1,346	12	179	1,537	155	1	169	68	1,930
Williamsport	871	14	68	953	148	12	105	24	1,242
<b>Central Region</b>	<b>10,163</b>	<b>349</b>	<b>883</b>	<b>11,395</b>	<b>1,095</b>	<b>16</b>	<b>921</b>	<b>252</b>	<b>13,679</b>
Altoona	1,022	39	92	1,153	260	66	86	27	1,592
Mercer	790	17	62	869	1,283	917	105	22	3,196
Erie	1,239	55	155	1,449	209	53	59	16	1,786
Pittsburgh	3,509	196	206	3,911	919	42	247	70	5,189
<b>Western Region</b>	<b>6,560</b>	<b>307</b>	<b>515</b>	<b>7,382</b>	<b>2,671</b>	<b>1,078</b>	<b>497</b>	<b>135</b>	<b>11,763</b>
<b>Total</b>	<b>27,745</b>	<b>892</b>	<b>1,761</b>	<b>30,398</b>	<b>5,840</b>	<b>1,123</b>	<b>2,207</b>	<b>580</b>	<b>40,148</b>
<b>Percent of Total</b>	<b>69%</b>	<b>2%</b>	<b>4%</b>	<b>75%</b>	<b>15%</b>	<b>3%</b>	<b>5%</b>	<b>2%</b>	<b>100%</b>

**Parole and Probation Supervised Populations**



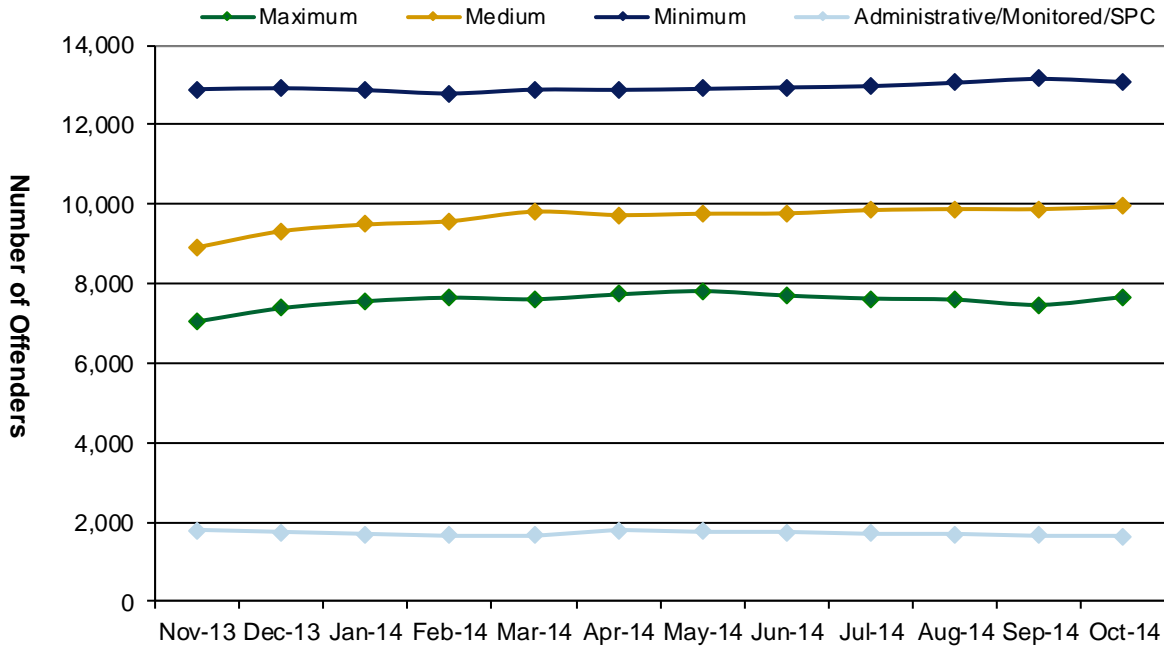
**Supervised State Sentence Cases**



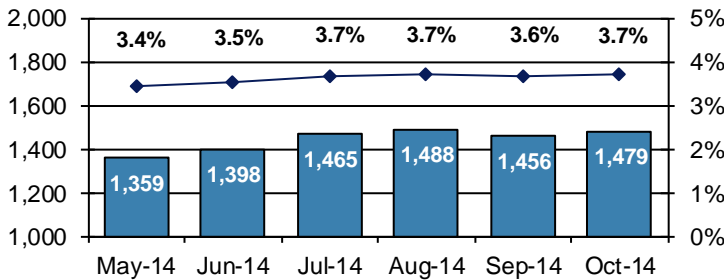
**Table 4**  
**SUPERVISED POPULATION BY GRADE OF SUPERVISION and REGION / DISTRICT**  
**October 2014**

Region / District	Reporting							Non-Reporting		Total Population
	Enhanced	Maximum	Medium	Minimum	ADM/MON /SPC	Not Classified	Subtotal	Absconder	Detainees	
Chester	3	323	770	1,397	231	5	2,729	70	432	3,231
Philadelphia	23	1,989	2,516	3,943	338	49	8,858	511	2,106	11,475
<b>Eastern Region</b>	<b>26</b>	<b>2,312</b>	<b>3,286</b>	<b>5,340</b>	<b>569</b>	<b>54</b>	<b>11,587</b>	<b>581</b>	<b>2,538</b>	<b>14,706</b>
Allentown	22	1,144	1,168	1,477	148	15	3,974	232	640	4,846
Harrisburg	19	1,319	1,309	1,648	254	12	4,561	221	879	5,661
Scranton	8	327	575	590	125	1	1,626	63	241	1,930
Williamsport	2	154	359	360	161	1	1,037	24	181	1,242
<b>Central Region</b>	<b>51</b>	<b>2,944</b>	<b>3,411</b>	<b>4,075</b>	<b>688</b>	<b>29</b>	<b>11,198</b>	<b>540</b>	<b>1,941</b>	<b>13,679</b>
Altoona	1	327	478	473	55	5	1,339	25	228	1,592
Mercer	2	446	921	1,266	187	5	2,827	58	311	3,196
Erie	4	480	483	493	105	2	1,567	49	170	1,786
Pittsburgh	23	1,153	1,358	1,425	46	13	4,018	226	945	5,189
<b>Western Region</b>	<b>30</b>	<b>2,406</b>	<b>3,240</b>	<b>3,657</b>	<b>393</b>	<b>25</b>	<b>9,751</b>	<b>358</b>	<b>1,654</b>	<b>11,763</b>
<b>Total</b>	<b>107</b>	<b>7,662</b>	<b>9,937</b>	<b>13,072</b>	<b>1,650</b>	<b>108</b>	<b>32,536</b>	<b>1,479</b>	<b>6,133</b>	<b>40,148</b>
<b>Percent of Total</b>	<b>&lt;1%</b>	<b>19%</b>	<b>25%</b>	<b>33%</b>	<b>4%</b>	<b>&lt;1%</b>	<b>81%</b>	<b>4%</b>	<b>15%</b>	<b>100%</b>

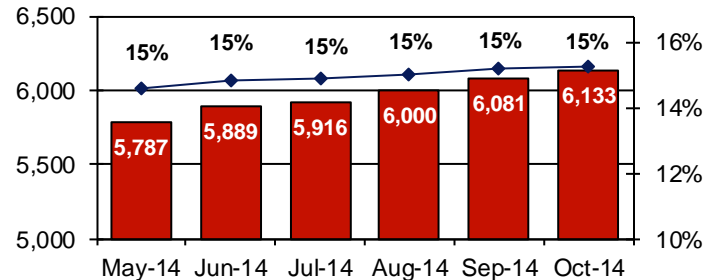
**PBPP Active Cases By Supervision Level**



**Number of Absconders and % of Population**



**Number of Detainees and % of Population**



**Table 5**  
**SUPERVISED POPULATION BY GENDER, RACE and REGION / DISTRICT**  
**October 2014**

Region / District	Male					Female					% Male	Total Population
	White	Black	Hispanic	Other <sup>1</sup>	Total	White	Black	Hispanic	Other <sup>1</sup>	Total		
Chester	1,353	1,409	142	34	2,938	210	73	4	6	293	91%	3,231
Philadelphia	1,491	7,614	1,434	150	10,689	245	448	82	11	786	93%	11,475
<b>EASTERN REGION</b>	<b>2,844</b>	<b>9,023</b>	<b>1,576</b>	<b>184</b>	<b>13,627</b>	<b>455</b>	<b>521</b>	<b>86</b>	<b>17</b>	<b>1,079</b>	<b>93%</b>	<b>14,706</b>
Allentown	2,096	1,077	1,157	37	4,367	326	88	58	7	479	90%	4,846
Harrisburg	2,527	1,828	679	31	5,065	429	108	54	5	596	89%	5,661
Scranton	1,221	355	104	13	1,693	207	17	11	2	237	88%	1,930
Williamsport	859	104	17	5	985	230	21	4	2	257	79%	1,242
<b>CENTRAL REGION</b>	<b>6,703</b>	<b>3,364</b>	<b>1,957</b>	<b>86</b>	<b>12,110</b>	<b>1,192</b>	<b>234</b>	<b>127</b>	<b>16</b>	<b>1,569</b>	<b>89%</b>	<b>13,679</b>
Altoona	1,172	127	6	6	1,311	267	14	0	0	281	82%	1,592
Mercer	2,059	374	13	7	2,453	653	80	5	5	743	77%	3,196
Erie	1,088	388	57	13	1,546	196	38	4	2	240	87%	1,786
Pittsburgh	2,202	2,364	53	16	4,635	388	154	4	8	554	89%	5,189
<b>WESTERN REGION</b>	<b>6,521</b>	<b>3,253</b>	<b>129</b>	<b>42</b>	<b>9,945</b>	<b>1,504</b>	<b>286</b>	<b>13</b>	<b>15</b>	<b>1,818</b>	<b>85%</b>	<b>11,763</b>
<b>TOTAL</b>	<b>16,068</b>	<b>15,640</b>	<b>3,662</b>	<b>312</b>	<b>35,682</b>	<b>3,151</b>	<b>1,041</b>	<b>226</b>	<b>48</b>	<b>4,466</b>	<b>89%</b>	<b>40,148</b>

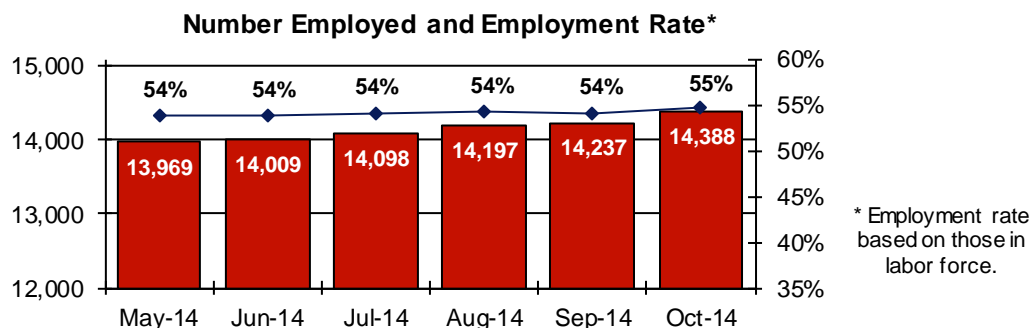
<sup>1</sup> "Other" includes Asian, Pacific Islander, Native American, Native Alaskan, and cases not elsewhere classified.

**Table 6**  
**SUPERVISED POPULATION BY EMPLOYMENT STATUS and REGION / DISTRICT**  
**October 2014**

Region / District	In Labor Force				Not In Labor Force					Total Population
	Employed Part Time	Employed Full Time	Unemployed	Employment Rate	Unable to Work <sup>2</sup>	Student	Unearned Income <sup>3</sup>	Unknown	Non-Reporting	
Chester	150	1,200	973	58%	292	26	88	0	502	3,231
Philadelphia	741	2,389	4,323	42%	858	161	385	1	2,617	11,475
<b>EASTERN REGION</b>	<b>891</b>	<b>3,589</b>	<b>5,296</b>	<b>46%</b>	<b>1,150</b>	<b>187</b>	<b>473</b>	<b>1</b>	<b>3,119</b>	<b>14,706</b>
Allentown	248	1,717	1,041	65%	653	38	277	0	872	4,846
Harrisburg	230	1,824	2,040	50%	271	27	169	0	1,100	5,661
Scranton	51	851	403	69%	129	9	183	0	304	1,930
Williamsport	105	566	125	84%	128	19	94	0	205	1,242
<b>CENTRAL REGION</b>	<b>634</b>	<b>4,958</b>	<b>3,609</b>	<b>61%</b>	<b>1,181</b>	<b>93</b>	<b>723</b>	<b>0</b>	<b>2,481</b>	<b>13,679</b>
Altoona	123	460	488	54%	107	9	152	0	253	1,592
Mercer	284	973	846	60%	358	38	326	2	369	3,196
Erie	120	547	573	54%	163	10	153	1	219	1,786
Pittsburgh	292	1,517	1,137	61%	829	42	201	0	1,171	5,189
<b>WESTERN REGION</b>	<b>819</b>	<b>3,497</b>	<b>3,044</b>	<b>59%</b>	<b>1,457</b>	<b>99</b>	<b>832</b>	<b>3</b>	<b>2,012</b>	<b>11,763</b>
<b>TOTAL</b>	<b>2,344</b>	<b>12,044</b>	<b>11,949</b>	<b>55%</b>	<b>3,788</b>	<b>379</b>	<b>2,028</b>	<b>4</b>	<b>7,612</b>	<b>40,148</b>

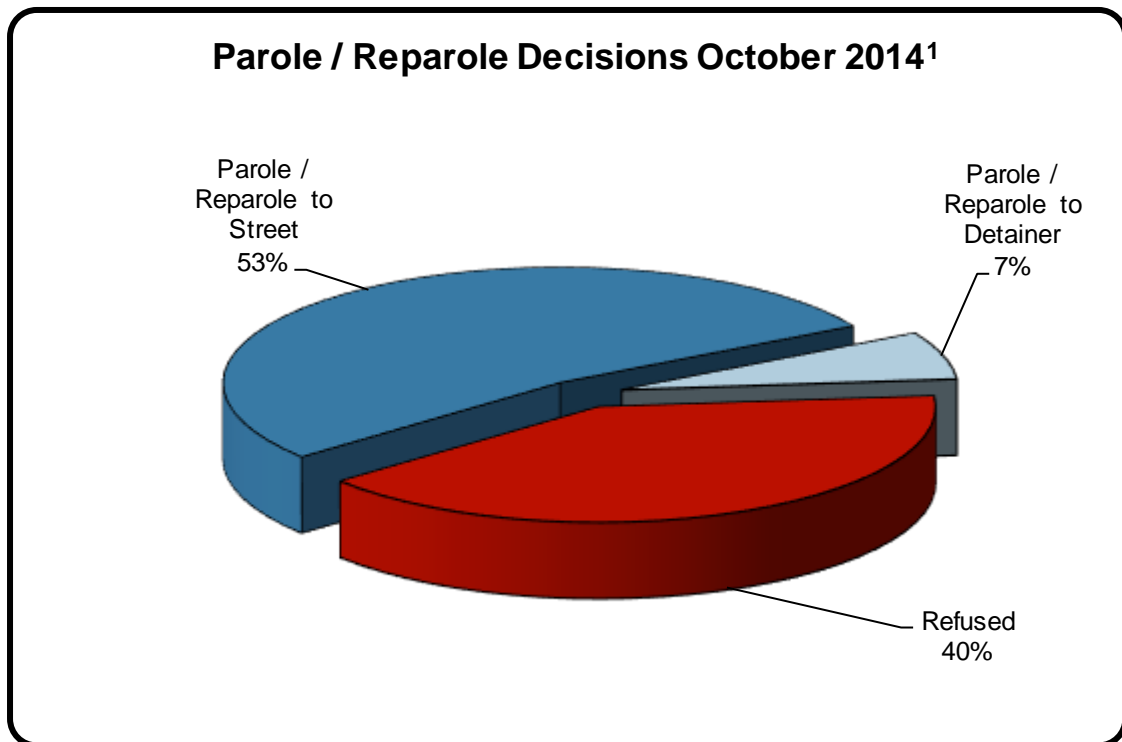
<sup>2</sup> Offender is unable to work due to a physical or mental disability, is a care provider, attends inpatient treatment, etc.

<sup>3</sup> Offender collects income assistance, workman's compensation, monthly pension, Social Security, disability payments, etc.



**Table 7  
BOARD DECISIONS  
October 2014**

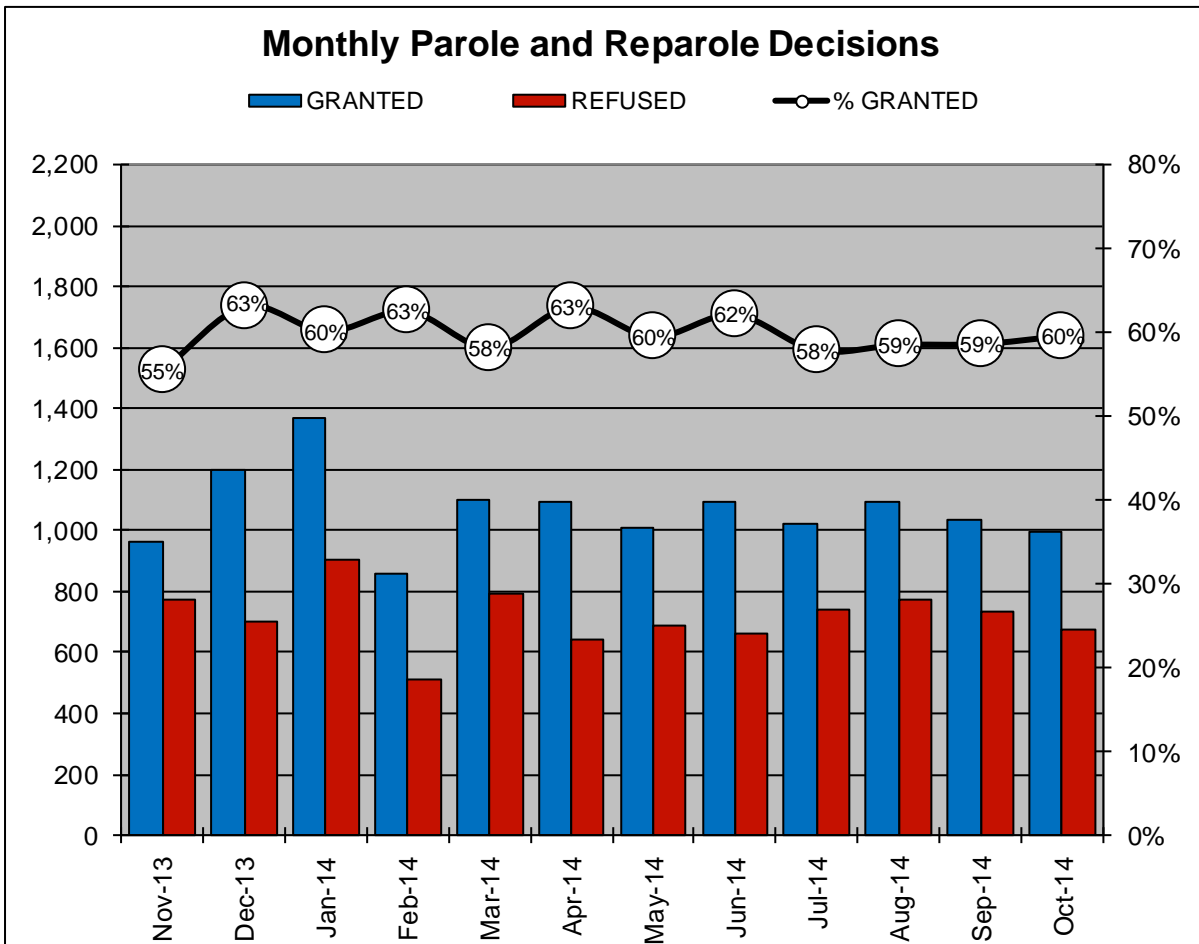
<b>Type of Decision</b>		<b>Total</b>
Parole / Reparole to Street	887	
Parole / Reparole to Detainer	112	
Refused	677	
<b>Total Considered</b>		<b>1,676</b>
Recommitments as TPV	534	
Recommitments as CPV	163	
Recommitments as CPV and TPV	5	
<b>Total Recommitments</b>		<b>702</b>
Refer to Prior Action		94
Other Decisions		1,152
<b>Total Decisions</b>		<b>3,624</b>



<sup>1</sup> The 59% does not necessarily reflect the overall grant rate, but rather is the calculated percent of grant decisions for the total number of Board Actions produced during this period of time.

**Table 8**  
**MONTHLY PAROLE and REPAROLE DECISIONS**  
**October 2014**

MONTH-YEAR	GRANTED	REFUSED	CONSIDERED	% GRANTED
Nov-13	966	775	1,741	55%
Dec-13	1,202	701	1,903	63%
Jan-14	1,367	905	2,272	60%
Feb-14	859	513	1,372	63%
Mar-14	1,102	792	1,894	58%
Apr-14	1,094	640	1,734	63%
May-14	1,009	686	1,695	60%
Jun-14	1,094	665	1,759	62%
Jul-14	1,019	742	1,761	58%
Aug-14	1,094	775	1,869	59%
Sep-14	1,036	731	1,767	59%
Oct-14	999	677	1,676	60%
<b>Monthly Average Over 12 Months</b>	1,070	717	1,787	60%



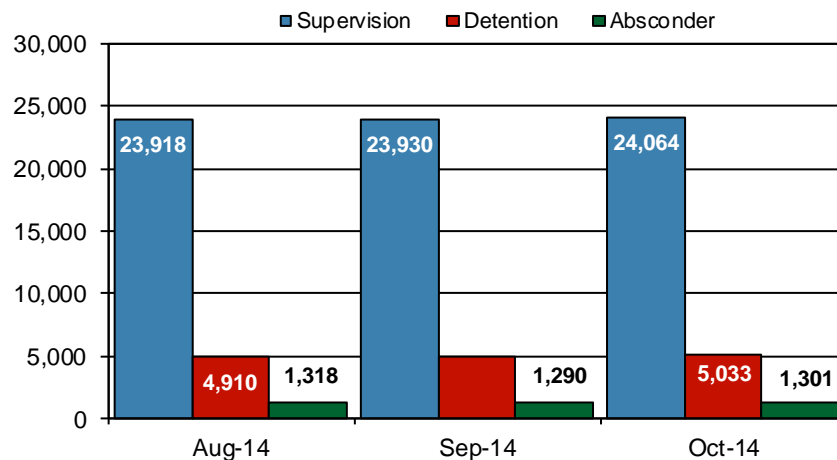


## PBPP Population Breakdown by Place of Incarceration/Jurisdiction - October 2014

Offender Status - October 2014					
Status	State Prison	County Prison	County Sentence	Other States' Cases	Total
Supervision	22,732	1,332	5,803	2,669	32,536
Absconder	1,187	114	178	0	1,479
Detention	4,718	315	982	118	6,133
<b>Total</b>	<b>28,637</b>	<b>1,761</b>	<b>6,963</b>	<b>2,787</b>	<b>40,148</b>

PBPP Monthly Population Profile						
Offender Status	May-14	Jun-14	Jul-14	Aug-14	Sep-14	Oct-14
<b>State sentence from state institution</b>	<b>28,088</b>	<b>28,175</b>	<b>28,344</b>	<b>28,452</b>	<b>28,458</b>	<b>28,637</b>
Supervision	22,528	22,539	22,611	22,613	22,602	22,732
Absconder	1,111	1,132	1,193	1,221	1,188	1,187
Detention	4,449	4,504	4,540	4,618	4,668	4,718
<b>State sentence from county prison</b>	<b>1,695</b>	<b>1,689</b>	<b>1,692</b>	<b>1,694</b>	<b>1,734</b>	<b>1,761</b>
Supervision	1,330	1,312	1,310	1,305	1,328	1,332
Absconder	78	85	93	97	102	114
Detention	287	292	289	292	304	315
<b>County sentence Prob &amp; Parole</b>	<b>6,984</b>	<b>7,017</b>	<b>6,954</b>	<b>6,980</b>	<b>6,979</b>	<b>6,963</b>
Supervision	5,890	5,877	5,822	5,840	5,824	5,803
Absconder	169	180	179	169	165	178
Detention	925	960	953	971	990	982
<b>Other states' sentence Prob &amp; Parole</b>	<b>2,847</b>	<b>2,845</b>	<b>2,820</b>	<b>2,833</b>	<b>2,794</b>	<b>2,787</b>
Supervision	2,720	2,711	2,686	2,713	2,674	2,669
Absconder	1	1	0	1	1	0
Detention	126	133	134	119	119	118
<b>PBPP Population end of month</b>	<b>39,614</b>	<b>39,726</b>	<b>39,810</b>	<b>39,959</b>	<b>39,965</b>	<b>40,148</b>

### State Sentence Cases by Offender Status



## PBPP Population Breakdown by Place of Incarceration/Jurisdiction - October 2014

Monthly Count of Grant and Refuse Board Actions							
Type of Decision	County Prison			State Prison			All Grant/Refuse Board Actions
	Grant	Refuse	Total	Grant	Refuse	Total	
November 2013	5	6	11	961	769	1,730	1,741
December 2013	13	7	20	1,189	694	1,883	1,903
January 2014	5	5	10	1,362	900	2,262	2,272
February 2014	11	1	12	848	512	1,360	1,372
March 2014	6	4	10	1,096	788	1,884	1,894
April 2014	9	1	10	1,085	639	1,724	1,734
May 2014	4	1	5	1,005	685	1,690	1,695
June 2014	5	4	9	1,089	661	1,750	1,759
July 2014	3	0	3	1,016	742	1,758	1,761
August 2014	3	5	8	1,091	770	1,861	1,869
September 2014	3	1	4	1,033	730	1,763	1,767
October 2014	2	4	6	997	673	1,670	1,676
<b>2014 Total</b>	<b>51</b>	<b>26</b>	<b>77</b>	<b>10,622</b>	<b>7,100</b>	<b>17,722</b>	<b>17,799</b>

Additions and Deletions						
	May-14	Jun-14	Jul-14	Aug-14	Sep-14	Oct-14
<b>Total Additions</b>	<b>1,581</b>	<b>1,402</b>	<b>1,534</b>	<b>1,440</b>	<b>1,446</b>	<b>1,556</b>
State sentence - State Prison	1,114	1,013	1,126	1,032	1,033	1,044
State sentence - County Prison	94	67	83	78	103	116
County sentence Prob & Parole	213	180	184	177	178	258
Other states' sentence	160	142	141	153	132	138
<b>Total Deletions</b>	<b>1,396</b>	<b>1,262</b>	<b>1,441</b>	<b>1,270</b>	<b>1,436</b>	<b>1,368</b>
<b>State sentence - State Prison</b>	<b>881</b>	<b>806</b>	<b>859</b>	<b>798</b>	<b>905</b>	<b>789</b>
<i>Technical Violator</i>	277	253	267	263	308	247
<i>Convicted Violator</i>	192	198	204	186	203	185
<i>Successful Completion</i>	367	319	351	306	360	327
<i>Other Case Closure</i>	45	36	37	43	34	30
<b>State sentence - County Prison</b>	<b>48</b>	<b>61</b>	<b>70</b>	<b>60</b>	<b>65</b>	<b>68</b>
<i>Technical Violator</i>	18	25	19	23	22	18
<i>Convicted Violator</i>	9	6	11	5	10	12
<i>Successful Completion</i>	20	26	34	28	33	34
<i>Other Case Closure</i>	1	4	6	4	0	4
<b>County sentence Prob &amp; Parole</b>	<b>316</b>	<b>250</b>	<b>345</b>	<b>274</b>	<b>294</b>	<b>365</b>
<i>Technical Violator</i>	55	32	46	39	27	48
<i>Convicted Violator</i>	32	19	39	26	31	47
<i>Successful Completion</i>	129	120	166	134	149	183
<i>Other Case Closure</i>	100	79	94	75	87	87
<b>Other states' sentence</b>	<b>151</b>	<b>145</b>	<b>167</b>	<b>138</b>	<b>172</b>	<b>146</b>
<i>Technical Violator</i>	0	1	1	3	1	1
<i>Convicted Violator</i>	3	4	1	3	0	0
<i>Successful Completion</i>	54	55	56	45	62	45
<i>Other Case Closure</i>	94	85	109	87	109	100
<b>PBPP Population end of month</b>	<b>39,614</b>	<b>39,726</b>	<b>39,810</b>	<b>39,959</b>	<b>39,965</b>	<b>40,148</b>