

# COMMONWEALTH OF PENNSYLVANIA

## Board of Probation and Parole

### MONTHLY PROGRAM REPORT

May 2015



**Tom Wolf**  
Governor

John R. Tuttle  
Acting Chairman

Edward L. Burke  
Member

Michael L. Green  
Member

Leslie M. Grey  
Member

Jeffrey R. Imboden  
Member

Craig R. McKay  
Member

Michael C. Potteiger  
Member

Jennifer Storm  
Victim Advocate

**PBPP**  
AN EQUAL OPPORTUNITY EMPLOYER

Published June 11, 2015 by the PBPP Statistical Reporting and Evidence-Based Program Evaluation Office

Copyright © 2015 Commonwealth of Pennsylvania, Board of Probation and Parole. All rights reserved.

**Table 1**  
**WORKLOAD AND POPULATION CHANGES BY REGION / DISTRICT**  
**May 2015**

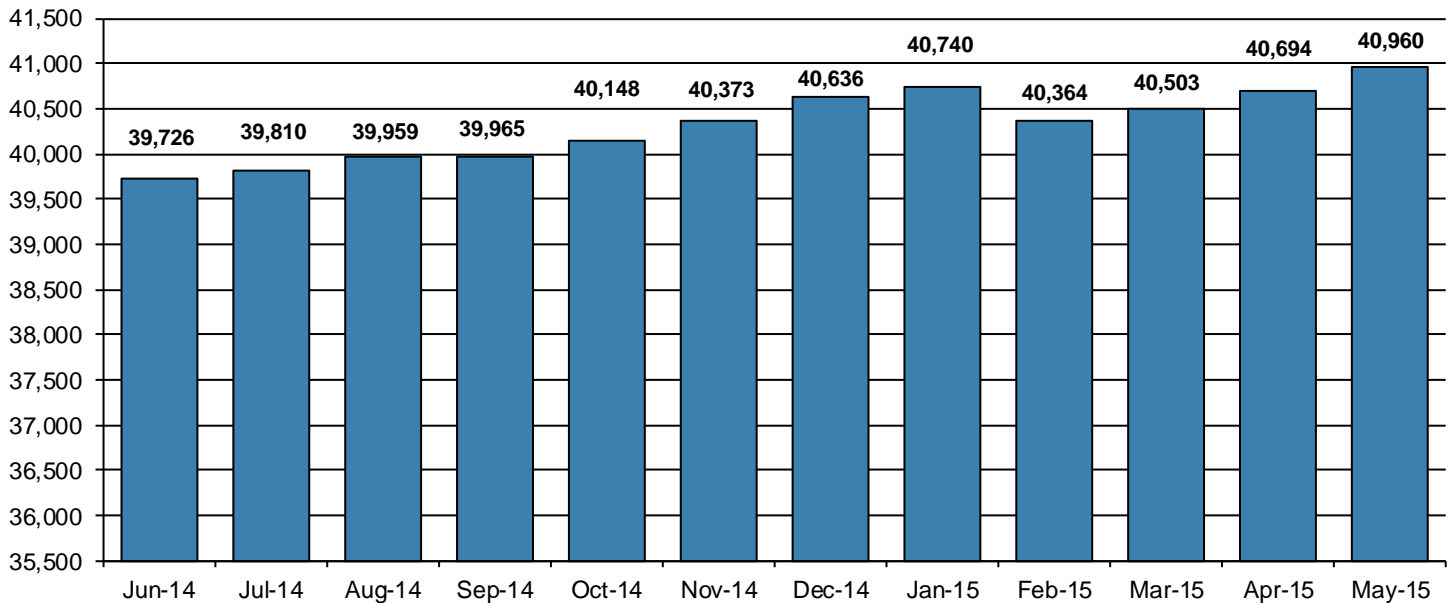
REGION / DISTRICT	Beginning Fiscal Yr <sup>1</sup> July 2014	Current Month Population	Fiscal YTD Index	Additions	Deletions		Number of Agents <sup>2</sup>	Average Workload <sup>3</sup>
					Recommits/ Revocations	Other Deletions		
CHESTER	3,172	3,174	100	77	21	74	42	130
PHILADELPHIA	11,285	11,759	104	347	81	183	150	138
<b>EASTERN REGION</b>	<b>14,457</b>	<b>14,933</b>	<b>103</b>	<b>424</b>	<b>102</b>	<b>257</b>	<b>192</b>	<b>136</b>
ALLENTOWN	4,847	4,855	100	196	48	78	63	149
HARRISBURG	5,536	5,951	107	203	47	78	70	163
SCRANTON	1,910	2,024	106	49	23	38	30	137
WILLIAMSPORT	1,195	1,219	102	38	8	29	16	140
<b>CENTRAL REGION</b>	<b>13,488</b>	<b>14,049</b>	<b>104</b>	<b>486</b>	<b>126</b>	<b>223</b>	<b>179</b>	<b>152</b>
ALTOONA	1,605	1,688	105	56	14	17	22	154
MERCER	3,270	3,224	99	170	41	92	45	143
ERIE	1,766	1,856	105	69	22	23	23	159
PITTSBURGH	5,140	5,210	101	187	90	96	73	146
<b>WESTERN REGION</b>	<b>11,781</b>	<b>11,978</b>	<b>102</b>	<b>482</b>	<b>167</b>	<b>228</b>	<b>163</b>	<b>148</b>
<b>TOTAL Supervised</b>	<b>39,726</b>	<b>40,960</b>	<b>103</b>	<b>1,392</b>	<b>395</b>	<b>708</b>	<b>534</b>	<b>145</b>

<sup>1</sup> effective June 30<sup>2</sup> Filled agent positions

PA Offenders in Other States	<b>3,245</b>	<b>3,336</b>	<b>103</b>	<b>61</b>	<b>4</b>	<b>118</b>
------------------------------	--------------	--------------	------------	-----------	----------	------------

<sup>3</sup> Workload is a measure of the expected hours per month an agent's caseload and other duties require. An agent's available hours is 131.75.

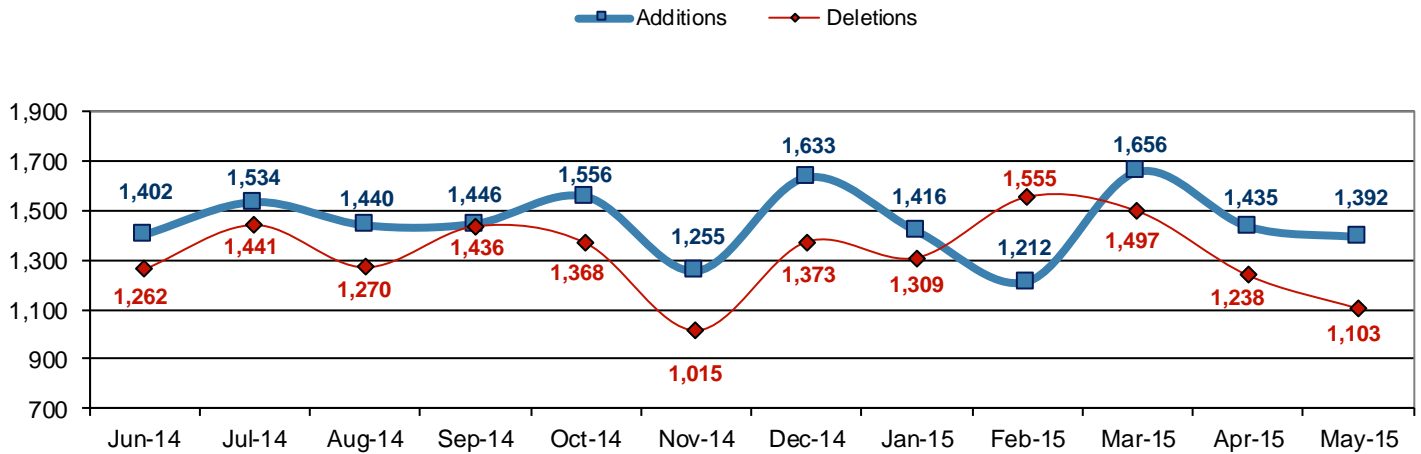
### Population - Retrospective Year View



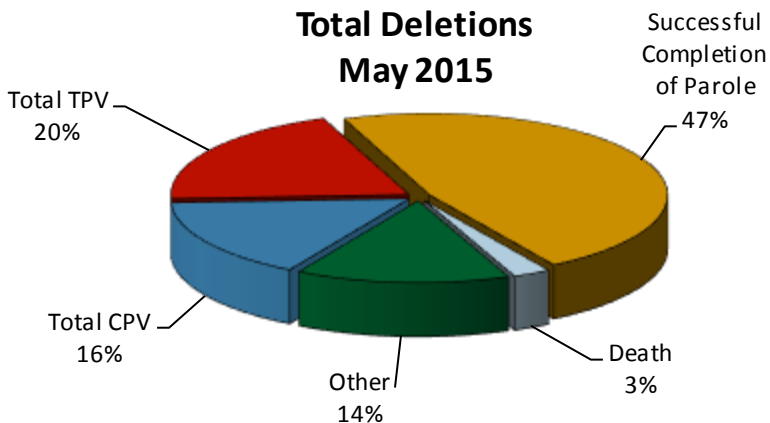
**Table 2  
SUPERVISED POPULATION ADDITIONS AND DELETIONS  
May 2015**

Population Additions and Deletions	Parole	Reparole	Special County Probation	Special County Parole	Other States' Probation	Other States' Parole	Monthly Total	Fiscal YTD Total
<b>ADDITIONS</b>	812	219	134	86	108	33	1,392	15,975
<b>DELETIONS-RECOMMITMENTS</b>								
<i>Convicted Parole Violator</i>								
State Corrections	97	37	2	0	0	0	136	2,201
County Corrections	0	7	24	7	0	0	38	445
Other States	0	0	0	0	1	0	1	12
<i>Total Convicted Parole Violator</i>	97	44	26	7	1	0	175	2,658
<i>Technical Parole Violator</i>								
State Corrections	112	53	2	0	0	0	167	2,722
County Corrections	7	17	17	12	0	0	53	637
Other States	0	0	0	0	0	0	0	13
<i>Total Technical Parole Violator</i>	119	70	19	12	0	0	220	3,372
<b>TOTAL RECOMMITMENTS</b>	216	114	45	19	1	0	395	6,030
Deletion Successful Completion	251	102	100	23	34	10	520	6,236
Deletion Death	14	6	8	0	0	0	28	301
Deletion Other	9	4	75	6	56	10	160	2,038
<b>TOTAL DELETIONS</b>	490	226	228	48	91	20	1,103	14,605

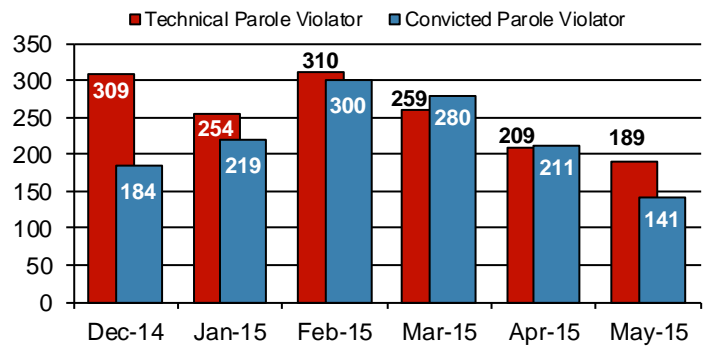
**Population Additions & Deletions-Retrospective Year View**



**Total Deletions  
May 2015**



**State Sentence Parole Revocations\***

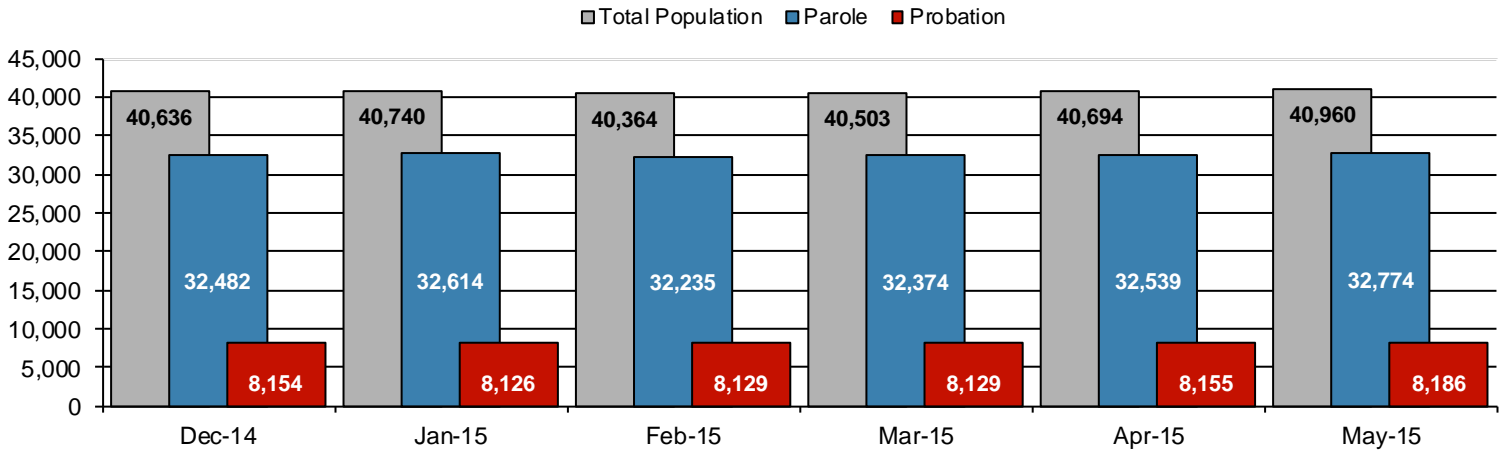


\* These revocations represent field case closure records and are dependent on case processing.

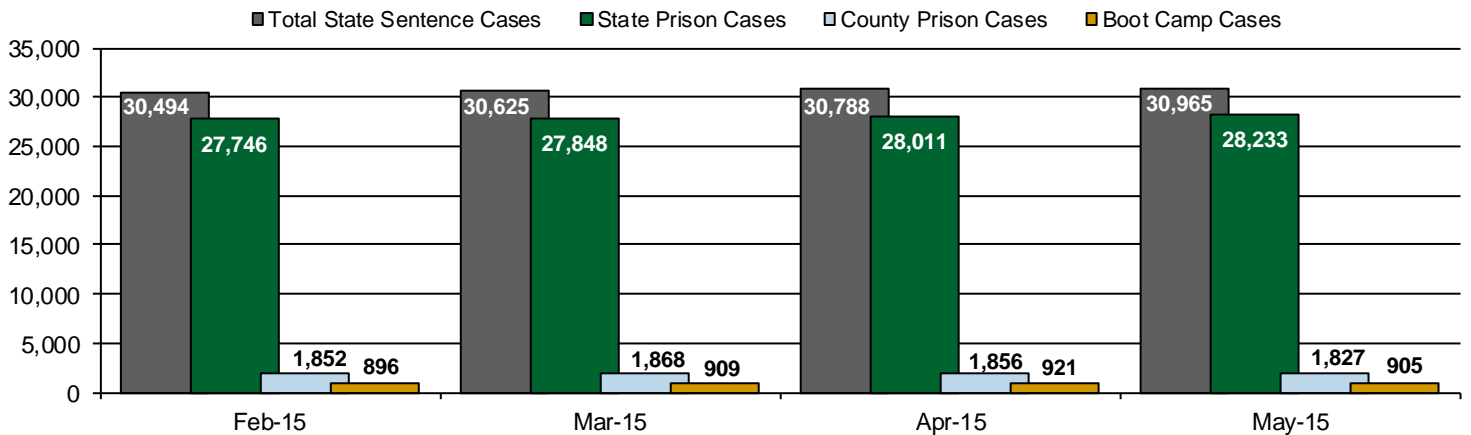
**Table 3**  
**SUPERVISED POPULATION BY ORIGINATING JURISDICTION and REGION / DISTRICT**  
**May 2015**

Region / District	PA Parole State Sentence				County		Other States		Total Population
	State Prisons	Boot Camp	County Prisons	Subtotal	Special Probation	Special Parole	Probation	Parole	
Chester	2,035	46	100	2,181	676	16	249	52	3,174
Philadelphia	9,117	205	256	9,578	1,499	9	519	154	11,759
<b>Eastern Region</b>	<b>11,152</b>	<b>251</b>	<b>356</b>	<b>11,759</b>	<b>2,175</b>	<b>25</b>	<b>768</b>	<b>206</b>	<b>14,933</b>
Allentown	3,392	108	401	3,901	473	6	374	101	4,855
Harrisburg	4,727	200	314	5,241	320	3	305	82	5,951
Scranton	1,411	21	172	1,604	158	0	194	68	2,024
Williamsport	871	18	83	972	124	9	90	24	1,219
<b>Central Region</b>	<b>10,401</b>	<b>347</b>	<b>970</b>	<b>11,718</b>	<b>1,075</b>	<b>18</b>	<b>963</b>	<b>275</b>	<b>14,049</b>
Altoona	1,080	45	93	1,218	267	83	90	30	1,688
Mercer	798	16	68	882	1,267	948	104	23	3,224
Erie	1,280	59	146	1,485	221	67	64	19	1,856
Pittsburgh	3,522	187	194	3,903	939	37	253	78	5,210
<b>Western Region</b>	<b>6,680</b>	<b>307</b>	<b>501</b>	<b>7,488</b>	<b>2,694</b>	<b>1,135</b>	<b>511</b>	<b>150</b>	<b>11,978</b>
<b>Total</b>	<b>28,233</b>	<b>905</b>	<b>1,827</b>	<b>30,965</b>	<b>5,944</b>	<b>1,178</b>	<b>2,242</b>	<b>631</b>	<b>40,960</b>
<b>Percent of Total</b>	<b>69%</b>	<b>2%</b>	<b>5%</b>	<b>76%</b>	<b>15%</b>	<b>3%</b>	<b>5%</b>	<b>1%</b>	<b>100%</b>

**Parole and Probation Supervised Populations**



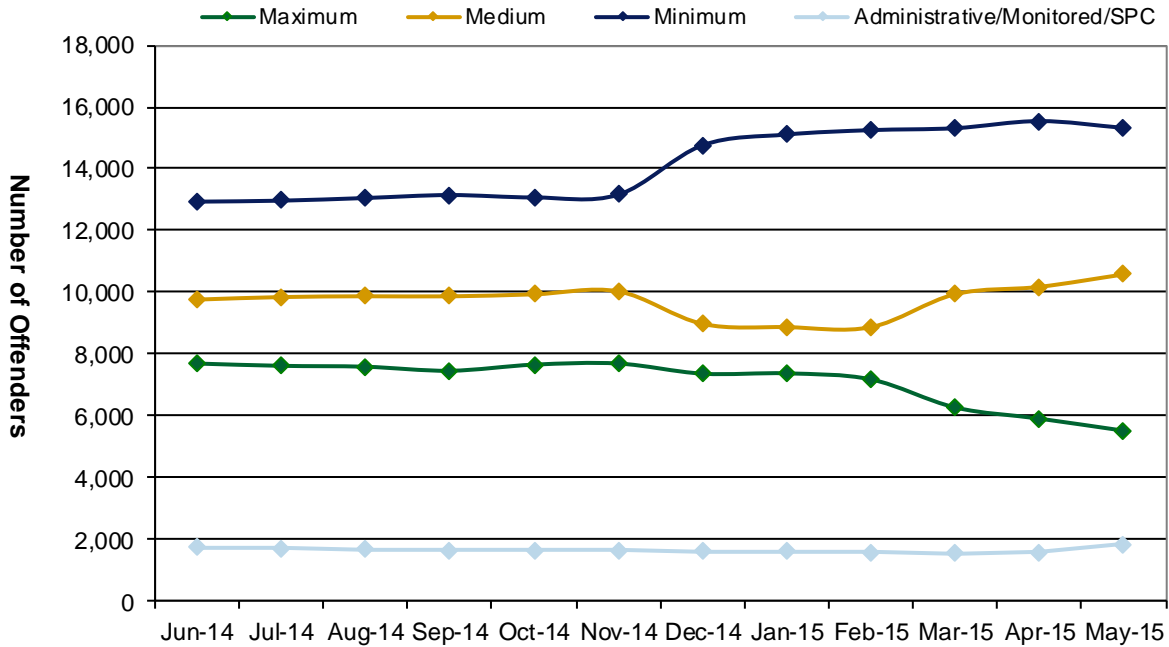
**Supervised State Sentence Cases**



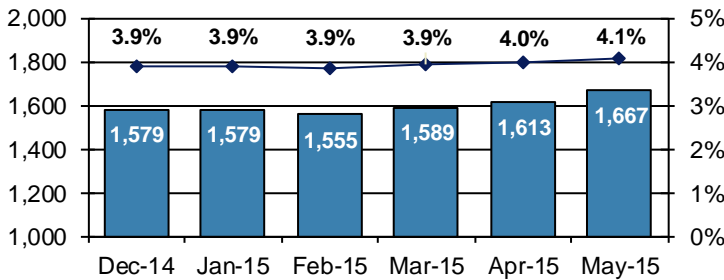
**Table 4**  
**SUPERVISED POPULATION BY GRADE OF SUPERVISION and REGION / DISTRICT**  
**May 2015**

Region / District	Reporting							Non-Reporting		Total Population
	Enhanced	Maximum	Medium	Minimum	ADM/MON /SPC	Not Classified	Subtotal	Absconder	Detainees	
Chester	4	247	675	1,548	245	2	2,721	92	361	3,174
Philadelphia	24	1,239	2,949	4,589	383	59	9,243	558	1,958	11,759
<b>Eastern Region</b>	<b>28</b>	<b>1,486</b>	<b>3,624</b>	<b>6,137</b>	<b>628</b>	<b>61</b>	<b>11,964</b>	<b>650</b>	<b>2,319</b>	<b>14,933</b>
Allentown	18	837	1,198	1,750	145	3	3,951	263	641	4,855
Harrisburg	24	1,004	1,546	1,926	352	20	4,872	261	818	5,951
Scranton	15	276	587	704	145	3	1,730	72	222	2,024
Williamsport	3	111	354	387	173	7	1,035	30	154	1,219
<b>Central Region</b>	<b>60</b>	<b>2,228</b>	<b>3,685</b>	<b>4,767</b>	<b>815</b>	<b>33</b>	<b>11,588</b>	<b>626</b>	<b>1,835</b>	<b>14,049</b>
Altoona	8	263	456	638	44	16	1,425	29	234	1,688
Mercer	3	365	797	1,491	177	8	2,841	75	308	3,224
Erie	2	344	585	553	124	2	1,610	60	186	1,856
Pittsburgh	35	839	1,434	1,737	56	20	4,121	227	862	5,210
<b>Western Region</b>	<b>48</b>	<b>1,811</b>	<b>3,272</b>	<b>4,419</b>	<b>401</b>	<b>46</b>	<b>9,997</b>	<b>391</b>	<b>1,590</b>	<b>11,978</b>
<b>Total</b>	<b>136</b>	<b>5,525</b>	<b>10,581</b>	<b>15,323</b>	<b>1,844</b>	<b>140</b>	<b>33,549</b>	<b>1,667</b>	<b>5,744</b>	<b>40,960</b>
<b>Percent of Total</b>	<b>&lt;1%</b>	<b>14%</b>	<b>26%</b>	<b>37%</b>	<b>5%</b>	<b>&lt;1%</b>	<b>82%</b>	<b>4%</b>	<b>14%</b>	<b>100%</b>

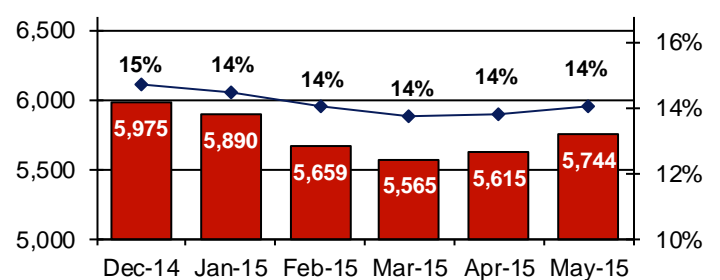
**PBPP Active Cases By Supervision Level**



**Number of Absconders and % of Population**



**Number of Detainees and % of Population**



**Table 5**  
**SUPERVISED POPULATION BY GENDER, RACE and REGION / DISTRICT**  
**May 2015**

Region / District	Male					Female					% Male	Total Population
	White	Black	Hispanic	Other <sup>1</sup>	Total	White	Black	Hispanic	Other <sup>1</sup>	Total		
Chester	1,310	1,416	136	30	2,892	196	77	6	3	282	91%	3,174
Philadelphia	1,552	7,788	1,483	153	10,976	245	439	89	10	783	93%	11,759
<b>EASTERN REGION</b>	<b>2,862</b>	<b>9,204</b>	<b>1,619</b>	<b>183</b>	<b>13,868</b>	<b>441</b>	<b>516</b>	<b>95</b>	<b>13</b>	<b>1,065</b>	<b>93%</b>	<b>14,933</b>
Allentown	2,102	1,048	1,184	34	4,368	335	83	59	10	487	90%	4,855
Harrisburg	2,716	1,889	742	32	5,379	408	110	48	6	572	90%	5,951
Scranton	1,256	375	116	10	1,757	231	23	11	2	267	87%	2,024
Williamsport	826	112	23	6	967	226	19	4	3	252	79%	1,219
<b>CENTRAL REGION</b>	<b>6,900</b>	<b>3,424</b>	<b>2,065</b>	<b>82</b>	<b>12,471</b>	<b>1,200</b>	<b>235</b>	<b>122</b>	<b>21</b>	<b>1,578</b>	<b>89%</b>	<b>14,049</b>
Altoona	1,229	154	8	6	1,397	273	18	0	0	291	83%	1,688
Mercer	2,046	393	20	7	2,466	653	93	6	6	758	76%	3,224
Erie	1,123	413	60	11	1,607	204	38	5	2	249	87%	1,856
Pittsburgh	2,222	2,376	60	15	4,673	382	145	4	6	537	90%	5,210
<b>WESTERN REGION</b>	<b>6,620</b>	<b>3,336</b>	<b>148</b>	<b>39</b>	<b>10,143</b>	<b>1,512</b>	<b>294</b>	<b>15</b>	<b>14</b>	<b>1,835</b>	<b>85%</b>	<b>11,978</b>
<b>TOTAL</b>	<b>16,382</b>	<b>15,964</b>	<b>3,832</b>	<b>304</b>	<b>36,482</b>	<b>3,153</b>	<b>1,045</b>	<b>232</b>	<b>48</b>	<b>4,478</b>	<b>89%</b>	<b>40,960</b>

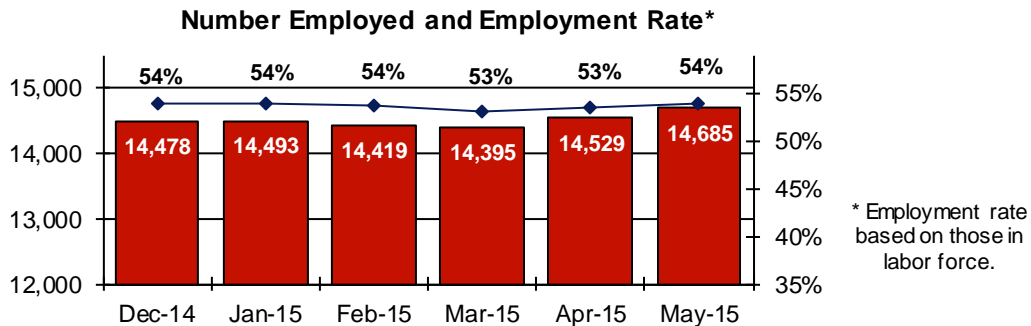
<sup>1</sup> "Other" includes Asian, Pacific Islander, Native American, Native Alaskan, and cases not elsewhere classified.

**Table 6**  
**SUPERVISED POPULATION BY EMPLOYMENT STATUS and REGION / DISTRICT**  
**May 2015**

Region / District	In Labor Force				Not In Labor Force					Total Population
	Employed Part Time	Employed Full Time	Unemployed	Employment Rate	Unable to Work <sup>2</sup>	Student	Unearned Income <sup>3</sup>	Unknown	Non-Reporting	
Chester	163	1,252	896	61%	279	30	101	0	453	3,174
Philadelphia	818	2,333	4,642	40%	919	148	383	0	2,516	11,759
<b>EASTERN REGION</b>	<b>981</b>	<b>3,585</b>	<b>5,538</b>	<b>45%</b>	<b>1,198</b>	<b>178</b>	<b>484</b>	<b>0</b>	<b>2,969</b>	<b>14,933</b>
Allentown	227	1,724	1,102	64%	586	37	275	0	904	4,855
Harrisburg	242	1,897	2,154	50%	367	29	182	1	1,079	5,951
Scranton	54	946	369	73%	151	20	190	0	294	2,024
Williamsport	102	540	159	80%	116	16	101	1	184	1,219
<b>CENTRAL REGION</b>	<b>625</b>	<b>5,107</b>	<b>3,784</b>	<b>60%</b>	<b>1,220</b>	<b>102</b>	<b>748</b>	<b>2</b>	<b>2,461</b>	<b>14,049</b>
Altoona	134	430	575	50%	120	16	150	0	263	1,688
Mercer	313	973	847	60%	341	36	328	3	383	3,224
Erie	116	537	633	51%	180	13	131	0	246	1,856
Pittsburgh	282	1,602	1,201	61%	792	35	208	1	1,089	5,210
<b>WESTERN REGION</b>	<b>845</b>	<b>3,542</b>	<b>3,256</b>	<b>57%</b>	<b>1,433</b>	<b>100</b>	<b>817</b>	<b>4</b>	<b>1,981</b>	<b>11,978</b>
<b>TOTAL</b>	<b>2,451</b>	<b>12,234</b>	<b>12,578</b>	<b>54%</b>	<b>3,851</b>	<b>380</b>	<b>2,049</b>	<b>6</b>	<b>7,411</b>	<b>40,960</b>

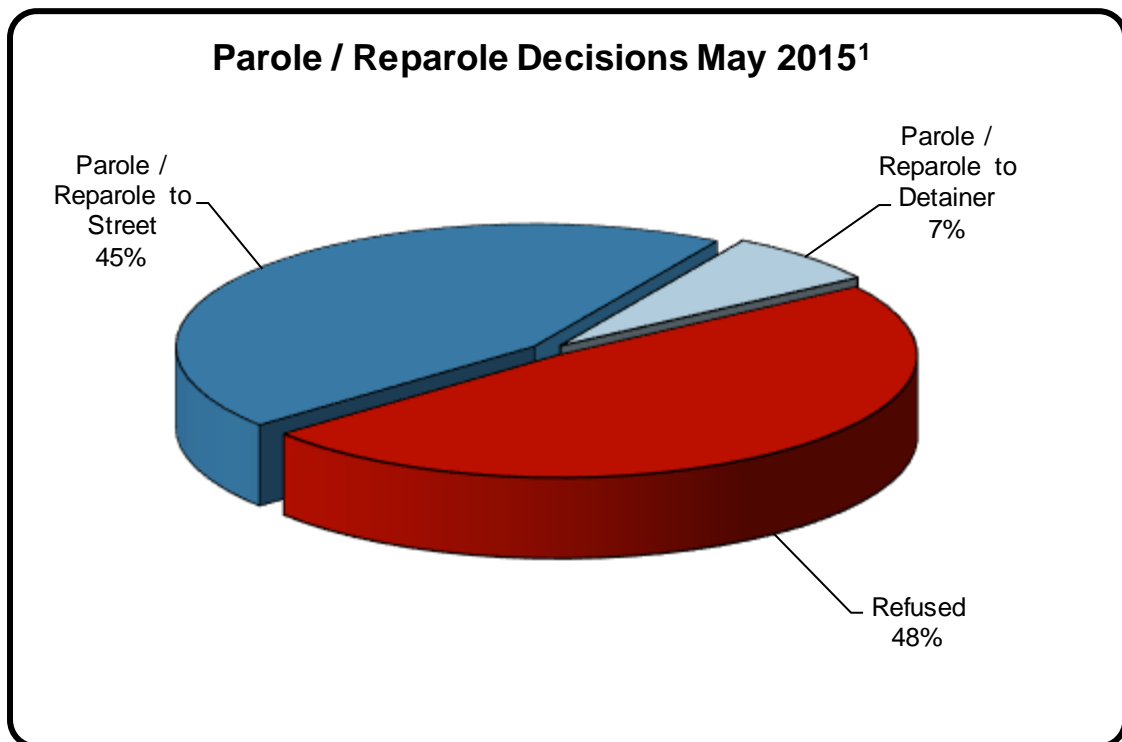
<sup>2</sup> Offender is unable to work due to a physical or mental disability, is a care provider, attends inpatient treatment, etc.

<sup>3</sup> Offender collects income assistance, workman's compensation, monthly pension, Social Security, disability payments, etc.



**Table 7  
BOARD DECISIONS  
May 2015**

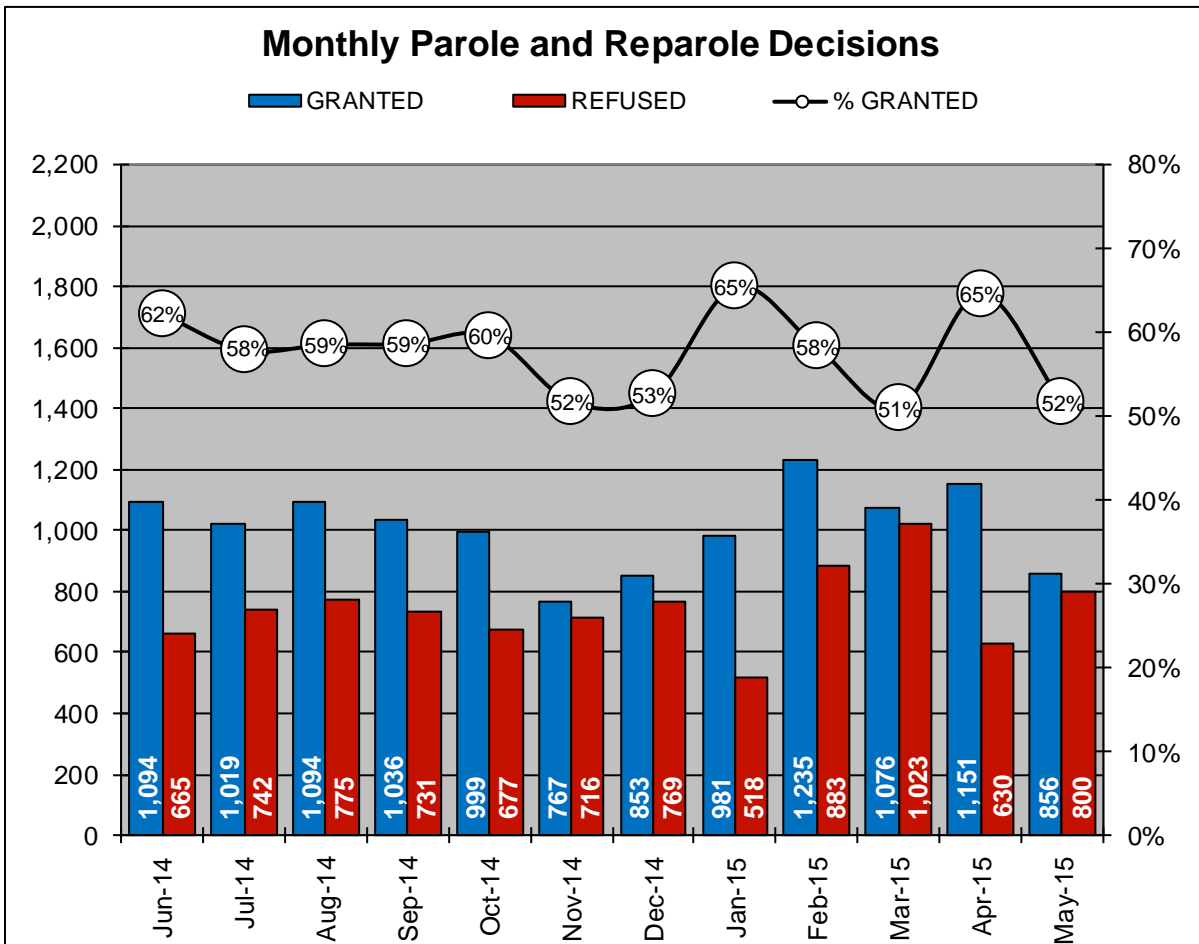
<b>Type of Decision</b>		<b>Total</b>
Parole / Reparole to Street	739	
Parole / Reparole to Detainer	117	
Refused	800	
<b>Total Considered</b>		<b>1,656</b>
Recommitments as TPV	397	
Recommitments as CPV	148	
Recommitments as CPV and TPV	9	
<b>Total Recommitments</b>		<b>554</b>
Refer to Prior Action		102
Other Decisions		1,207
<b>Total Decisions</b>		<b>3,519</b>



<sup>1</sup> The 52% does not necessarily reflect the overall grant rate, but rather is the calculated percent of grant decisions for the total number of Board Actions produced during this period of time.

**Table 8**  
**MONTHLY PAROLE and REPAROLE DECISIONS**  
**May 2015**

MONTH-YEAR	GRANTED	REFUSED	CONSIDERED	% GRANTED
Jun-14	1,094	665	1,759	62%
Jul-14	1,019	742	1,761	58%
Aug-14	1,094	775	1,869	59%
Sep-14	1,036	731	1,767	59%
Oct-14	999	677	1,676	60%
Nov-14	767	716	1,483	52%
Dec-14	853	769	1,622	53%
Jan-15	981	518	1,499	65%
Feb-15	1,235	883	2,118	58%
Mar-15	1,076	1,023	2,099	51%
Apr-15	1,151	630	1,781	65%
May-15	856	800	1,656	52%
<b>Monthly Average Over 12 Months</b>	1,013	744	1,758	58%



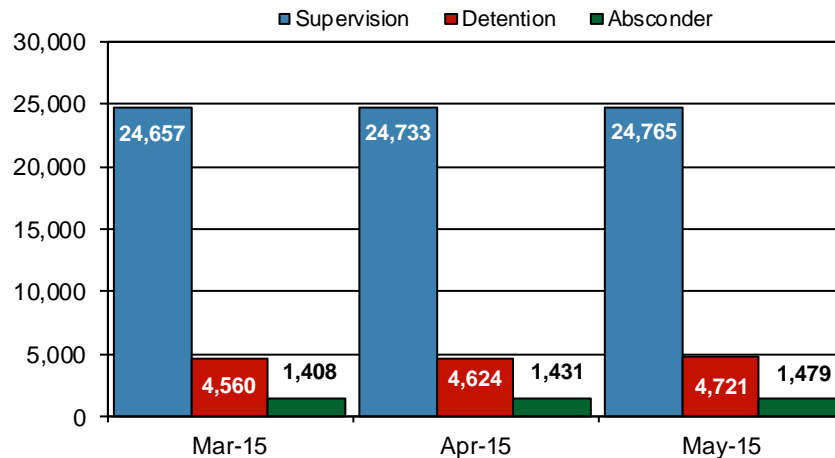


## PBPP Population Breakdown by Place of Incarceration/Jurisdiction - May 2015

Offender Status - May 2015					
Status	State Prison	County Prison	County Sentence	Other States' Cases	Total
Supervision	23,387	1,378	6,004	2,780	33,549
Absconder	1,351	128	188	0	1,667
Detention	4,400	321	930	93	5,744
<b>Total</b>	<b>29,138</b>	<b>1,827</b>	<b>7,122</b>	<b>2,873</b>	<b>40,960</b>

PBPP Monthly Population Profile						
Offender Status	Dec-14	Jan-15	Feb-15	Mar-15	Apr-15	May-15
<b>State sentence from state institution</b>	<b>28,910</b>	<b>29,031</b>	<b>28,642</b>	<b>28,757</b>	<b>28,932</b>	<b>29,138</b>
<i>Supervision</i>	23,057	23,236	23,064	23,218	23,333	23,387
<i>Absconder</i>	1,263	1,263	1,243	1,273	1,290	1,351
<i>Detention</i>	4,590	4,532	4,335	4,266	4,309	4,400
<b>State sentence from county prison</b>	<b>1,822</b>	<b>1,837</b>	<b>1,852</b>	<b>1,868</b>	<b>1,856</b>	<b>1,827</b>
<i>Supervision</i>	1,397	1,409	1,425	1,439	1,400	1,378
<i>Absconder</i>	129	131	131	135	141	128
<i>Detention</i>	296	297	296	294	315	321
<b>County sentence Prob &amp; Parole</b>	<b>7,083</b>	<b>7,047</b>	<b>7,042</b>	<b>7,042</b>	<b>7,067</b>	<b>7,122</b>
<i>Supervision</i>	5,929	5,904	5,927	5,961	5,992	6,004
<i>Absconder</i>	186	185	181	181	182	188
<i>Detention</i>	968	958	934	900	893	930
<b>Other states' sentence Prob &amp; Parole</b>	<b>2,821</b>	<b>2,825</b>	<b>2,828</b>	<b>2,836</b>	<b>2,839</b>	<b>2,873</b>
<i>Supervision</i>	2,699	2,722	2,734	2,731	2,741	2,780
<i>Absconder</i>	1	0	0	0	0	0
<i>Detention</i>	121	103	94	105	98	93
<b>PBPP Population end of month</b>	<b>40,636</b>	<b>40,740</b>	<b>40,364</b>	<b>40,503</b>	<b>40,694</b>	<b>40,960</b>

State Sentence Cases by Offender Status



## PBPP Population Breakdown by Place of Incarceration/Jurisdiction - May 2015

Additions and Deletions						
	Dec-14	Jan-15	Feb-15	Mar-15	Apr-15	May-15
<b>Total Additions</b>	<b>1,633</b>	<b>1,416</b>	<b>1,212</b>	<b>1,656</b>	<b>1,435</b>	<b>1,392</b>
State sentence - State Prison	1,153	1,024	759	1,189	1,021	967
State sentence - County Prison	121	80	107	107	81	64
County sentence Prob & Parole	215	174	203	212	192	220
Other states' sentence	144	138	143	148	141	141
<b>Total Deletions</b>	<b>1,373</b>	<b>1,309</b>	<b>1,555</b>	<b>1,497</b>	<b>1,238</b>	<b>1,103</b>
<b>State sentence - State Prison</b>	<b>876</b>	<b>816</b>	<b>1,022</b>	<b>937</b>	<b>745</b>	<b>654</b>
<i>Technical Violator</i>	283	237	287	238	193	165
<i>Convicted Violator</i>	175	205	281	269	203	134
<i>Successful Completion</i>	379	335	396	377	316	325
<i>Other Case Closure</i>	39	39	58	53	33	30
<b>State sentence - County Prison</b>	<b>66</b>	<b>62</b>	<b>73</b>	<b>71</b>	<b>56</b>	<b>62</b>
<i>Technical Violator</i>	26	17	23	21	16	24
<i>Convicted Violator</i>	9	14	19	11	8	7
<i>Successful Completion</i>	28	28	30	38	25	28
<i>Other Case Closure</i>	3	3	1	1	7	3
<b>County sentence Prob &amp; Parole</b>	<b>296</b>	<b>297</b>	<b>319</b>	<b>347</b>	<b>294</b>	<b>276</b>
<i>Technical Violator</i>	62	39	40	37	33	31
<i>Convicted Violator</i>	41	29	31	32	36	33
<i>Successful Completion</i>	133	150	145	154	143	123
<i>Other Case Closure</i>	60	79	103	124	82	89
<b>Other states' sentence</b>	<b>135</b>	<b>134</b>	<b>141</b>	<b>142</b>	<b>143</b>	<b>111</b>
<i>Technical Violator</i>	1	4	2	0	0	0
<i>Convicted Violator</i>	2	1	1	1	2	1
<i>Successful Completion</i>	49	56	61	48	51	44
<i>Other Case Closure</i>	83	73	77	93	90	66
<b>PBPP Population end of month</b>	<b>40,636</b>	<b>40,740</b>	<b>40,364</b>	<b>40,503</b>	<b>40,694</b>	<b>40,960</b>