

COMMONWEALTH OF PENNSYLVANIA

Board of Probation and Parole

MONTHLY PROGRAM REPORT

October 2013



Tom Corbett
Governor

Michael C. Potteiger
Chairman

Edward L. Burke
Member

Randy P. Feathers
Member

Michael L. Green
Member

Leslie M. Grey
Member

Jeffrey R. Imboden
Member

Craig R. McKay
Member

John R. Tuttle
Member

Lloyd A. White
Member

Carol Lavery
Victim Advocate

PBPP
AN EQUAL OPPORTUNITY EMPLOYER

Published November 8, 2013 by the PBPP Statistical Reporting and Evidence-Based Program Evaluation Office

Copyright © 2013 Commonwealth of Pennsylvania, Board of Probation and Parole. All rights reserved.

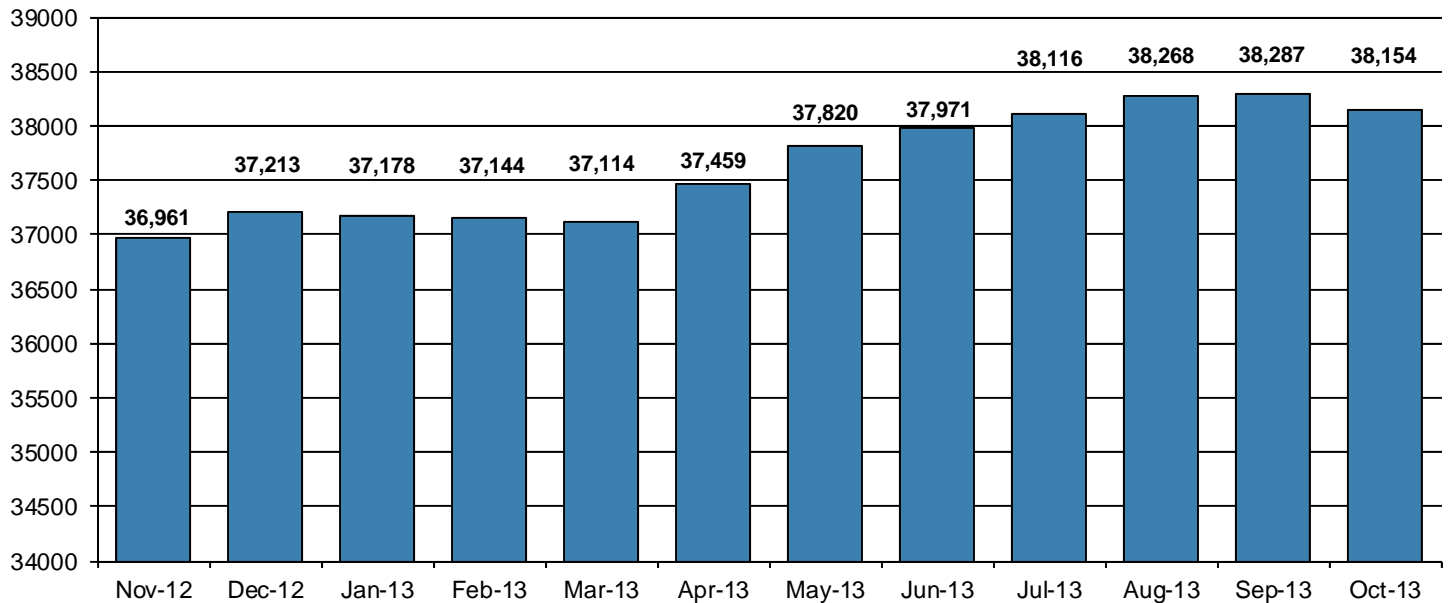
Table 1
WORKLOAD AND POPULATION CHANGES BY REGION / DISTRICT
October 2013

REGION / DISTRICT	Beginning Fiscal Yr ¹ July 2012	Current Month Population	Fiscal YTD Index	Additions	Deletions		Number of Agents ²	Average Workload	Total Workload
					Recommits/ Revocations	Other Deletions			
CHESTER	3,154	3,146	100	91	33	60	40	130	5,199
PHILADELPHIA	10,676	10,743	101	366	173	196	138	125	17,253
EASTERN REGION	13,830	13,889	100	457	206	256	178	126	22,453
ALLENTOWN	4,466	4,586	103	171	93	109	58	140	8,111
HARRISBURG	5,328	5,326	100	198	104	94	68	144	9,779
SCRANTON	1,961	1,851	94	58	39	61	31	112	3,464
WILLIAMSPORT	1,104	1,155	105	44	28	27	14	161	2,254
CENTRAL REGION	12,859	12,918	100	471	264	291	171	138	23,607
ALTOONA	1,502	1,504	100	60	47	34	22	136	2,993
MERCER	3,151	3,114	99	178	54	115	41	145	5,948
ERIE	1,762	1,748	99	58	31	51	26	126	3,263
PITTSBURGH	4,867	4,981	102	191	85	107	69	135	9,296
WESTERN REGION	11,282	11,347	101	487	217	307	158	136	21,500
TOTAL Supervised	37,971	38,154	100	1,415	687	854	507	133	67,560

¹ effective June 30² Filled agent positions

PA Offenders in Other States	3,189	3,144	99	59	13	68
------------------------------	--------------	--------------	-----------	-----------	-----------	-----------

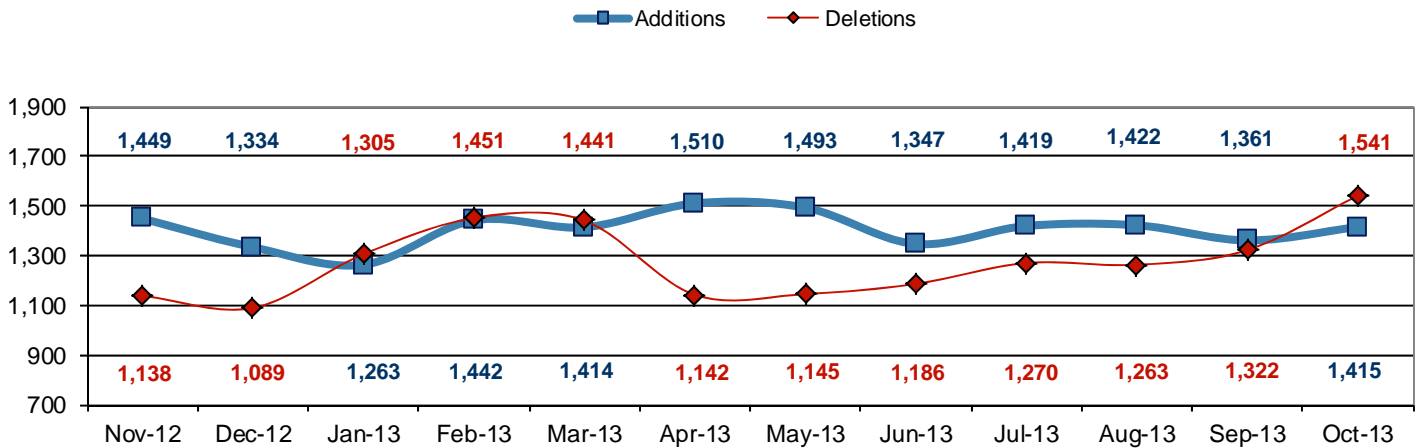
Population - Retrospective Year View



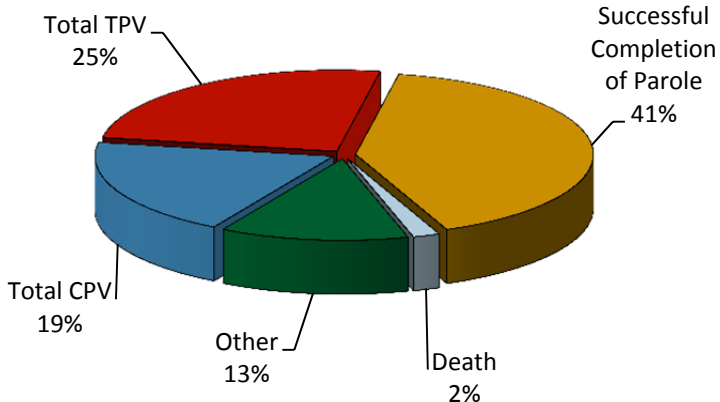
**Table 2
SUPERVISED POPULATION ADDITIONS AND DELETIONS
October 2013**

Population Additions and Deletions	Parole	Reparole	Special County Probation	Special County Parole	Other States' Probation	Other States' Parole	Monthly Total	Fiscal YTD Total
ADDITIONS	738	298	145	99	110	25	1,415	5,617
DELETIONS-RECOMMITMENTS								
<i>Convicted Parole Violator</i>								
State Corrections	196	49	4	0	0	0	249	761
County Corrections	10	6	27	7	0	0	50	167
Other States	0	0	0	0	0	0	0	3
<i>Total Convicted Parole Violator</i>	206	55	31	7	0	0	299	931
<i>Technical Parole Violator</i>								
State Corrections	241	69	4	0	0	0	314	1,073
County Corrections	8	4	43	15	0	0	70	201
Other States	0	0	0	0	3	1	4	8
<i>Total Technical Parole Violator</i>	249	73	47	15	3	1	388	1,282
TOTAL RECOMMITMENTS	455	128	78	22	3	1	687	2,213
Deletion Successful Completion	313	78	146	37	44	11	629	2,293
Deletion Death	18	6	1	1	2	0	28	99
Deletion Other	17	5	66	9	78	22	197	791
TOTAL DELETIONS	803	217	291	69	127	34	1,541	5,396

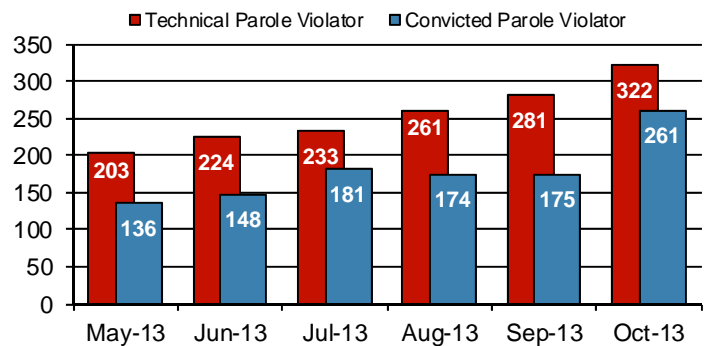
Population Additions & Deletions-Retrospective Year View



Total Deletions October 2013



State Sentence Parole Revocations*



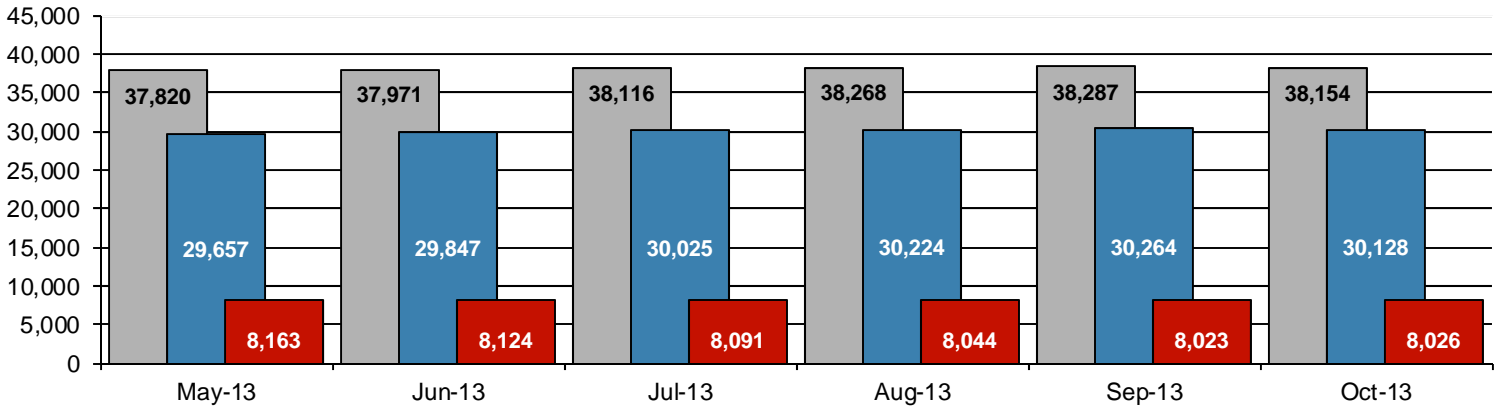
* These revocations represent field case closure records and are dependent on case processing.

Table 3
SUPERVISED POPULATION BY ORIGINATING JURISDICTION and REGION / DISTRICT
October 2013

Region / District	PA Parole State Sentence				County		Other States		Total Population
	State Prisons	Boot Camp	County Prisons	Subtotal	Special Probation	Special Parole	Probation	Parole	
Chester	1,979	36	122	2,137	679	21	254	55	3,146
Philadelphia	8,332	181	228	8,741	1,274	12	557	159	10,743
Eastern Region	10,311	217	350	10,878	1,953	33	811	214	13,889
Allentown	3,192	100	314	3,606	492	1	405	82	4,586
Harrisburg	4,254	194	197	4,645	337	3	277	64	5,326
Scranton	1,275	10	161	1,446	167	1	177	60	1,851
Williamsport	794	9	60	863	146	6	118	22	1,155
Central Region	9,515	313	732	10,560	1,142	11	977	228	12,918
Altoona	974	26	79	1,079	269	49	87	20	1,504
Mercer	797	25	40	862	1,279	841	113	19	3,114
Erie	1,157	66	196	1,419	195	42	71	21	1,748
Pittsburgh	3,314	240	163	3,717	883	57	246	78	4,981
Western Region	6,242	357	478	7,077	2,626	989	517	138	11,347
Total	26,068	887	1,560	28,515	5,721	1,033	2,305	580	38,154
Percent of Total	68%	2%	4%	74%	15%	3%	6%	2%	100%

Parole and Probation Supervised Populations

□ Total Population ■ Parole ■ Probation



Supervised State Sentence Cases

■ Total State Sentence Cases ■ State Prison Cases □ County Prison Cases ■ Boot Camp Cases

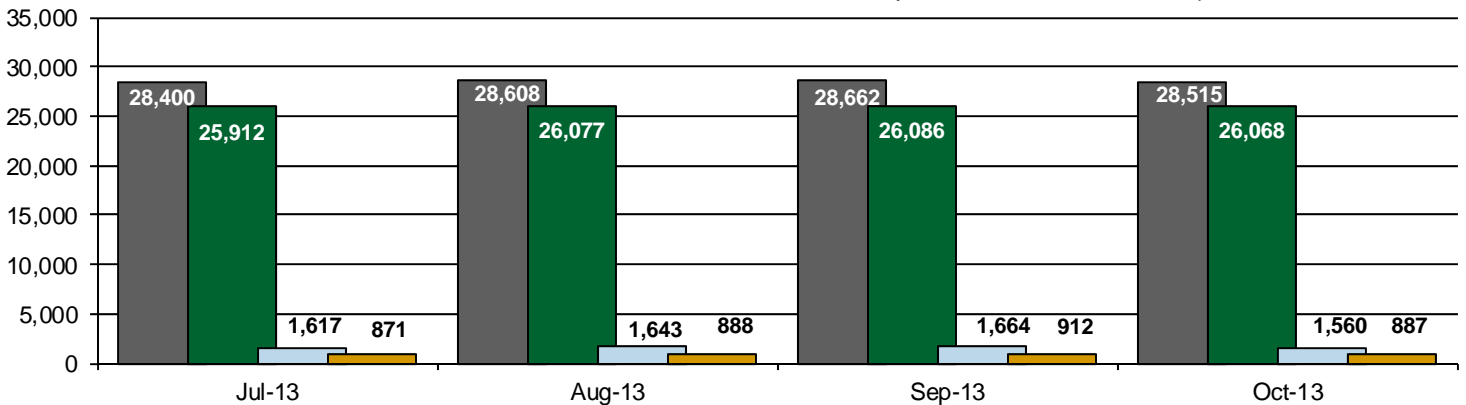
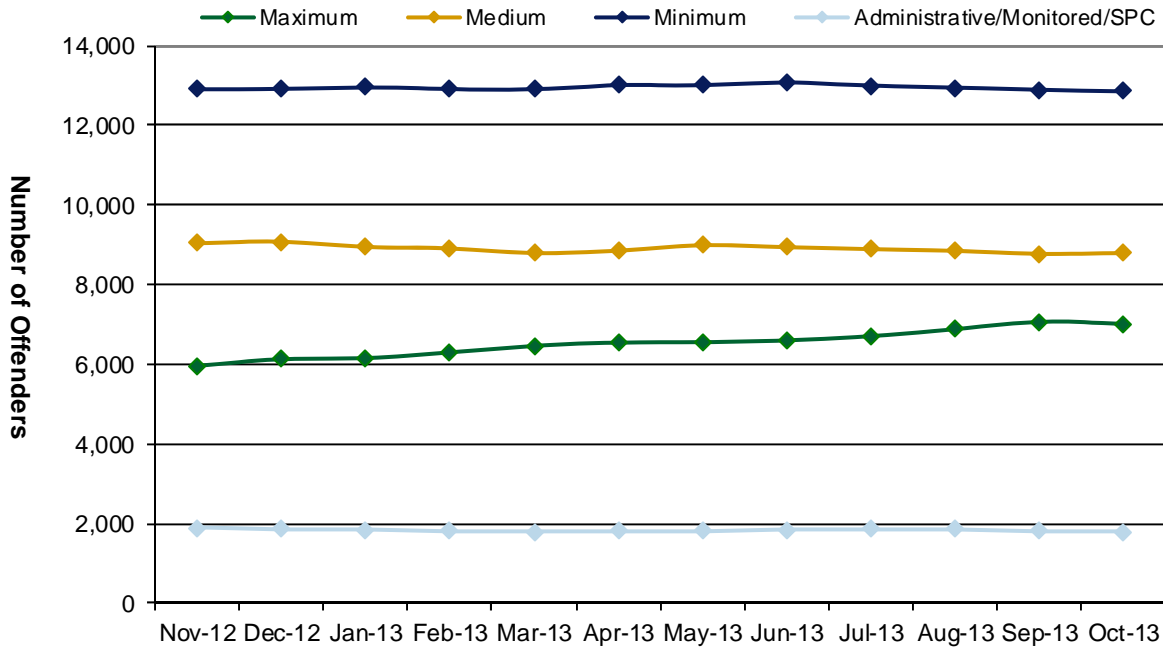


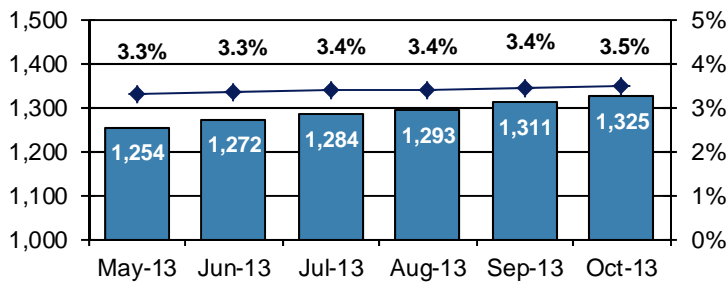
Table 4
SUPERVISED POPULATION BY GRADE OF SUPERVISION and REGION / DISTRICT
October 2013

Region / District	Reporting							Non-Reporting		Total Population
	Enhanced	Maximum	Medium	Minimum	ADM/MON /SPC	Not Classified	Subtotal	Absconder	Detainees	
Chester	1	279	717	1,430	214	6	2,647	58	441	3,146
Philadelphia	13	1,684	2,127	3,999	385	40	8,248	436	2,059	10,743
Eastern Region	14	1,963	2,844	5,429	599	46	10,895	494	2,500	13,889
Allentown	28	1,023	1,071	1,371	204	15	3,712	185	689	4,586
Harrisburg	27	1,184	1,200	1,537	278	17	4,243	231	852	5,326
Scranton	13	249	405	668	119	1	1,455	63	333	1,851
Williamsport	0	154	310	413	131	2	1,010	13	132	1,155
Central Region	68	2,610	2,986	3,989	732	35	10,420	492	2,006	12,918
Altoona	3	298	414	492	60	2	1,269	35	200	1,504
Mercer	3	351	896	1,237	224	6	2,717	64	333	3,114
Erie	6	461	390	526	115	2	1,500	39	209	1,748
Pittsburgh	33	1,330	1,260	1,176	51	23	3,873	201	907	4,981
Western Region	45	2,440	2,960	3,431	450	33	9,359	339	1,649	11,347
Total	127	7,013	8,790	12,849	1,781	114	30,674	1,325	6,155	38,154
Percent of Total	<1%	18%	23%	34%	5%	<1%	81%	3%	16%	100%

PBPP Active Cases By Supervision Level



Number of Absconders and % of Population



Number of Detainees and % of Population

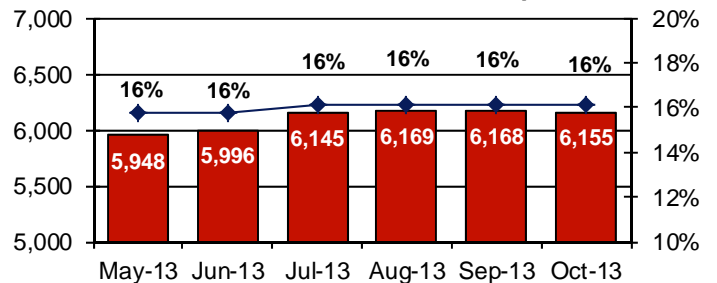


Table 5
SUPERVISED POPULATION BY GENDER, RACE and REGION / DISTRICT
October 2013

Region / District	Male					Female					% Male	Total Population
	White	Black	Hispanic	Other ¹	Total	White	Black	Hispanic	Other ¹	Total		
Chester	1,295	1,415	129	35	2,874	191	69	6	6	272	91%	3,146
Philadelphia	1,386	7,172	1,306	150	10,014	226	432	61	10	729	93%	10,743
EASTERN REGION	2,681	8,587	1,435	185	12,888	417	501	67	16	1,001	93%	13,889
Allentown	2,045	982	1,053	40	4,120	318	83	60	5	466	90%	4,586
Harrisburg	2,380	1,720	591	39	4,730	423	120	49	4	596	89%	5,326
Scranton	1,142	361	104	11	1,618	197	22	11	3	233	87%	1,851
Williamsport	789	110	17	3	919	207	16	10	3	236	80%	1,155
CENTRAL REGION	6,356	3,173	1,765	93	11,387	1,145	241	130	15	1,531	88%	12,918
Altoona	1,094	146	6	7	1,253	237	13	0	1	251	83%	1,504
Mercer	2,030	356	15	8	2,409	628	71	2	4	705	77%	3,114
Erie	1,056	386	49	10	1,501	201	39	5	2	247	86%	1,748
Pittsburgh	2,102	2,264	45	23	4,434	378	160	2	7	547	89%	4,981
WESTERN REGION	6,282	3,152	115	48	9,597	1,444	283	9	14	1,750	85%	11,347
TOTAL	15,319	14,912	3,315	326	33,872	3,006	1,025	206	45	4,282	89%	38,154

¹ "Other" includes Asian, Pacific Islander, Native American, Native Alaskan, and cases not elsewhere classified.

Table 6
SUPERVISED POPULATION BY EMPLOYMENT STATUS and REGION / DISTRICT
October 2013

Region / District	In Labor Force				Not In Labor Force					Total Population
	Employed Part Time	Employed Full Time	Unemployed	Employment Rate	Unable to Work ²	Student	Unearned Income ³	Unknown	Non-Reporting	
Chester	170	1,209	858	62%	299	30	81	0	499	3,146
Philadelphia	678	2,403	3,830	45%	772	155	406	4	2,495	10,743
EASTERN REGION	848	3,612	4,688	49%	1,071	185	487	4	2,994	13,889
Allentown	269	1,603	891	68%	583	51	315	0	874	4,586
Harrisburg	246	1,745	1,786	53%	282	27	155	2	1,083	5,326
Scranton	46	890	264	78%	63	10	182	0	396	1,851
Williamsport	91	516	179	77%	110	21	93	0	145	1,155
CENTRAL REGION	652	4,754	3,120	63%	1,038	109	745	2	2,498	12,918
Altoona	130	454	409	59%	110	17	149	0	235	1,504
Mercer	279	928	790	60%	341	41	338	0	397	3,114
Erie	116	547	511	56%	158	20	148	0	248	1,748
Pittsburgh	263	1,514	1,182	60%	628	49	237	0	1,108	4,981
WESTERN REGION	788	3,443	2,892	59%	1,237	127	872	0	1,988	11,347
TOTAL	2,288	11,809	10,700	57%	3,346	421	2,104	6	7,480	38,154

² Offender is unable to work due to a physical or mental disability, is a care provider, attends inpatient treatment, etc.

³ Offender collects income assistance, workman's compensation, monthly pension, Social Security, disability payments, etc.

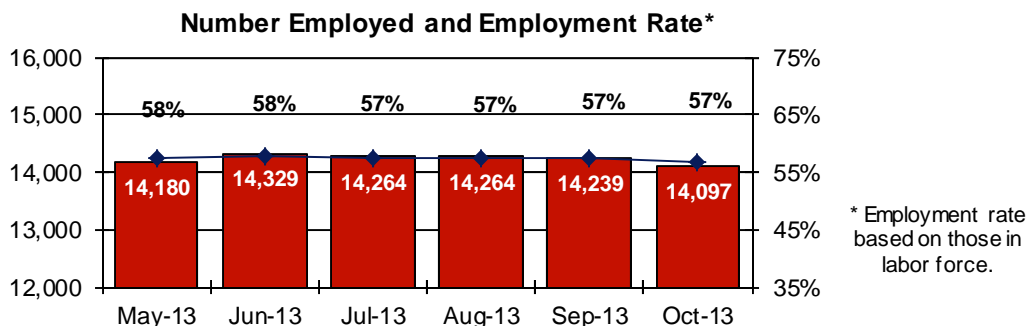
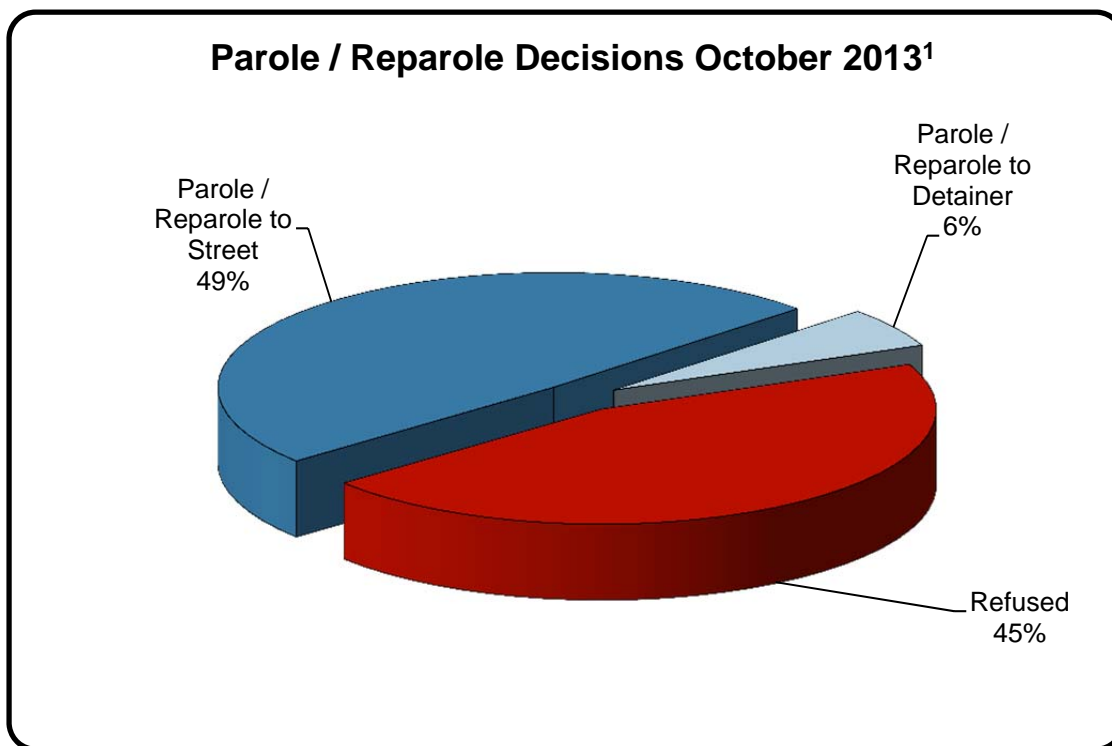


Table 7
BOARD DECISIONS
October 2013

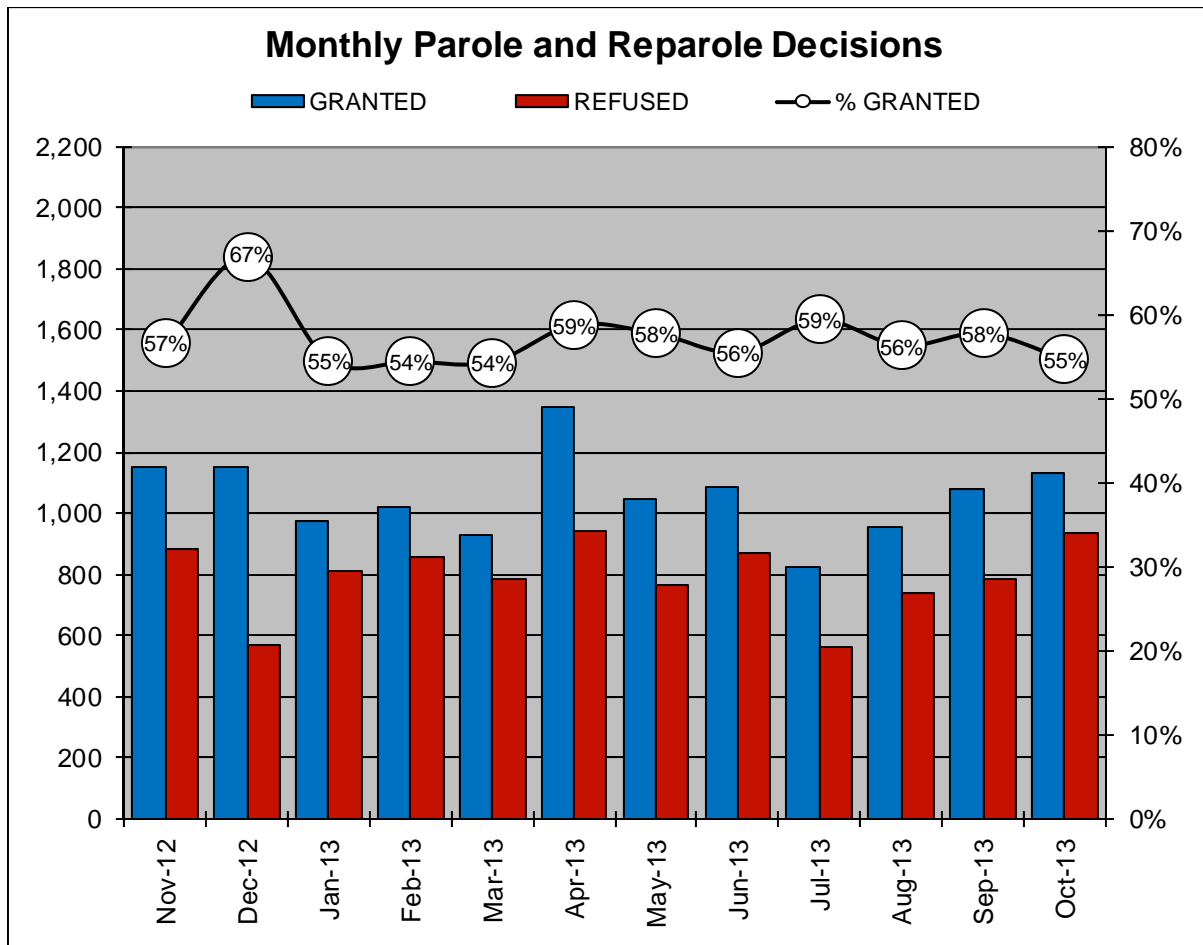
Type of Decision		Total
Parole / Reparole to Street	1,014	
Parole / Reparole to Detainer	116	
Refused	935	
Total Considered		2,065
Recommitments as TPV	374	
Recommitments as CPV	187	
Recommitments as CPV and TPV	15	
Total Recommitments		576
Refer to Prior Action		80
Other Decisions		1,004
Total Decisions		3,725



¹ The 55% does not necessarily reflect the overall grant rate, but rather is the calculated percent of grant decisions for the total number of Board Actions produced during this period of time.

Table 8
MONTHLY PAROLE and REPAROLE DECISIONS
October 2013

MONTH-YEAR	GRANTED	REFUSED	CONSIDERED	% GRANTED
Nov-12	1,152	881	2,033	57%
Dec-12	1,151	570	1,721	67%
Jan-13	972	810	1,782	55%
Feb-13	1,020	854	1,874	54%
Mar-13	931	782	1,713	54%
Apr-13	1,346	944	2,290	59%
May-13	1,047	766	1,813	58%
Jun-13	1,084	869	1,953	56%
Jul-13	825	564	1,389	59%
Aug-13	954	741	1,695	56%
Sep-13	1,076	786	1,862	58%
Oct-13	1,130	935	2,065	55%
Monthly Average Over 12 Months	1,057	792	1,849	58%

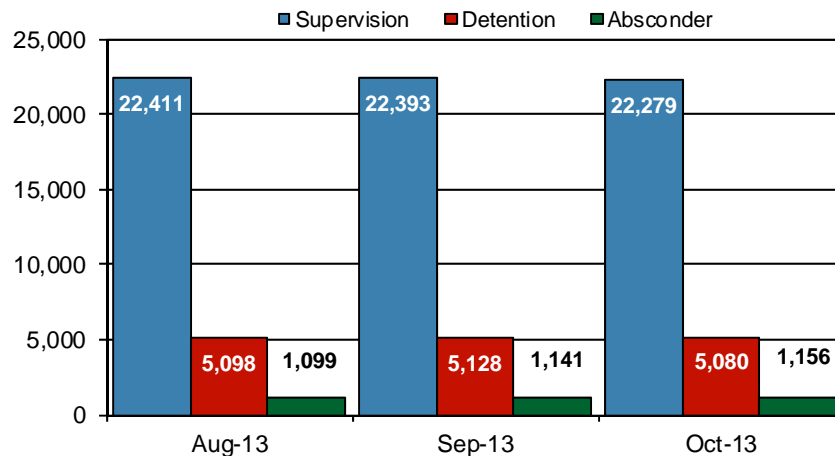


PBPP Population Breakdown By Place of Incarceration/Jurisdiction – October 2013

Offender Status - October 2013					
Status	State Prison	County Prison	County Sentence	Other States' Cases	Total
Supervision	21,040	1,239	5,648	2,747	30,674
Absconder	1,089	67	169	0	1,325
Detention	4,826	254	937	138	6,155
Total	26,955	1,560	6,754	2,885	38,154

PBPP Monthly Population Profile						
Offender Status	May-13	Jun-13	Jul-13	Aug-13	Sep-13	Oct-13
State sentence from state institution	26,479	26,648	26,783	26,965	26,998	26,955
Supervision	20,868	20,963	20,964	21,091	21,080	21,040
Absconder	1,016	1,046	1,043	1,037	1,079	1,089
Detention	4,595	4,639	4,776	4,837	4,839	4,826
State sentence from county prison	1,554	1,560	1,617	1,643	1,664	1,560
Supervision	1,245	1,248	1,295	1,320	1,313	1,239
Absconder	49	52	54	62	62	67
Detention	260	260	268	261	289	254
County sentence Prob & Parole	6,805	6,811	6,799	6,747	6,715	6,754
Supervision	5,640	5,656	5,624	5,603	5,624	5,648
Absconder	187	174	187	194	170	169
Detention	978	981	988	950	921	937
Other states' sentence Prob & Parole	2,982	2,952	2,917	2,913	2,910	2,885
Supervision	2,865	2,836	2,804	2,792	2,791	2,747
Absconder	2	0	0	0	0	0
Detention	115	116	113	121	119	138
PBPP Population end of month	37,820	37,971	38,116	38,268	38,287	38,154

State Sentence Cases by Offender Status



PBPP Population Breakdown By Place of Incarceration/Jurisdiction – October 2013

Monthly Count of Grant and Refuse Board Actions							
Type of Decision	County Prison			State Prison			All Grant/Refuse Board Actions
	Grant	Refuse	Total	Grant	Refuse	Total	
November 2012	30	10	40	1,122	871	1,993	2,033
December 2012	12	7	19	1,139	563	1,702	1,721
January 2013	17	10	27	955	800	1,755	1,782
February 2013	16	5	21	1,004	849	1,853	1,874
March 2013	12	7	19	919	775	1,694	1,713
April 2013	24	8	32	1,322	936	2,258	2,290
May 2013	18	9	27	1,029	757	1,786	1,813
June 2013	5	7	12	1,079	862	1,941	1,953
July 2013	4	4	8	821	560	1,381	1,389
August 2013	6	2	8	948	739	1,687	1,695
September 2013	8	1	9	1,068	785	1,853	1,862
October 2013	15	5	20	1,115	930	2,045	2,065
2013 Total	125	58	183	10,260	7,993	18,253	18,436

Additions and Deletions						
	May-13	Jun-13	Jul-13	Aug-13	Sep-13	Oct-13
Total Additions	1,493	1,347	1,419	1,422	1,361	1,415
State sentence - State Prison	1,072	933	978	1,021	999	960
State sentence - County Prison	51	41	111	82	74	76
County sentence Prob & Parole	200	229	199	187	146	244
Other states' sentence	170	144	131	132	142	135
Total Deletions	1,145	1,186	1,270	1,263	1,322	1,541
State sentence - State Prison	661	689	767	763	834	953
<i>Technical Violator</i>	196	215	224	254	272	310
<i>Convicted Violator</i>	131	145	172	163	168	245
<i>Successful Completion</i>	309	302	332	313	355	357
<i>Other Case Closure</i>	25	27	39	33	39	41
State sentence - County Prison	53	33	45	45	53	67
<i>Technical Violator</i>	7	9	9	7	9	12
<i>Convicted Violator</i>	5	3	9	11	7	16
<i>Successful Completion</i>	38	18	26	23	32	34
<i>Other Case Closure</i>	3	3	1	4	5	5
County sentence Prob & Parole	267	290	294	296	288	360
<i>Technical Violator</i>	36	42	34	37	44	62
<i>Convicted Violator</i>	24	33	28	35	36	38
<i>Successful Completion</i>	115	113	142	143	122	183
<i>Other Case Closure</i>	92	102	90	81	86	77
Other states' sentence	164	174	164	159	147	161
<i>Technical Violator</i>	3	4	2	2	0	4
<i>Convicted Violator</i>	0	1	2	0	1	0
<i>Successful Completion</i>	61	59	53	67	56	55
<i>Other Case Closure</i>	100	110	107	90	90	102
PBPP Population end of month	37,820	37,971	38,116	38,268	38,287	38,154