

COMMONWEALTH OF PENNSYLVANIA

Board of Probation and Parole

MONTHLY PROGRAM REPORT

November 2012



Tom Corbett
Governor

Michael C. Potteiger
Chairman

Randy P. Feathers
Member

Michael L. Green
Member

Craig R. McKay
Member

Judith E. Viglione
Member

C. James Fox
Member

Jeffrey R. Imboden
Member

John R. Tuttle
Member

Lloyd A. White
Member

Carol Lavery
Victim Advocate

PBPP
AN EQUAL OPPORTUNITY EMPLOYER

Published December 18, 2012 by the PBPP Statistical Reporting and Evidence-Based Program Evaluation Office

Copyright © 2012 Commonwealth of Pennsylvania, Board of Probation and Parole. All rights reserved.

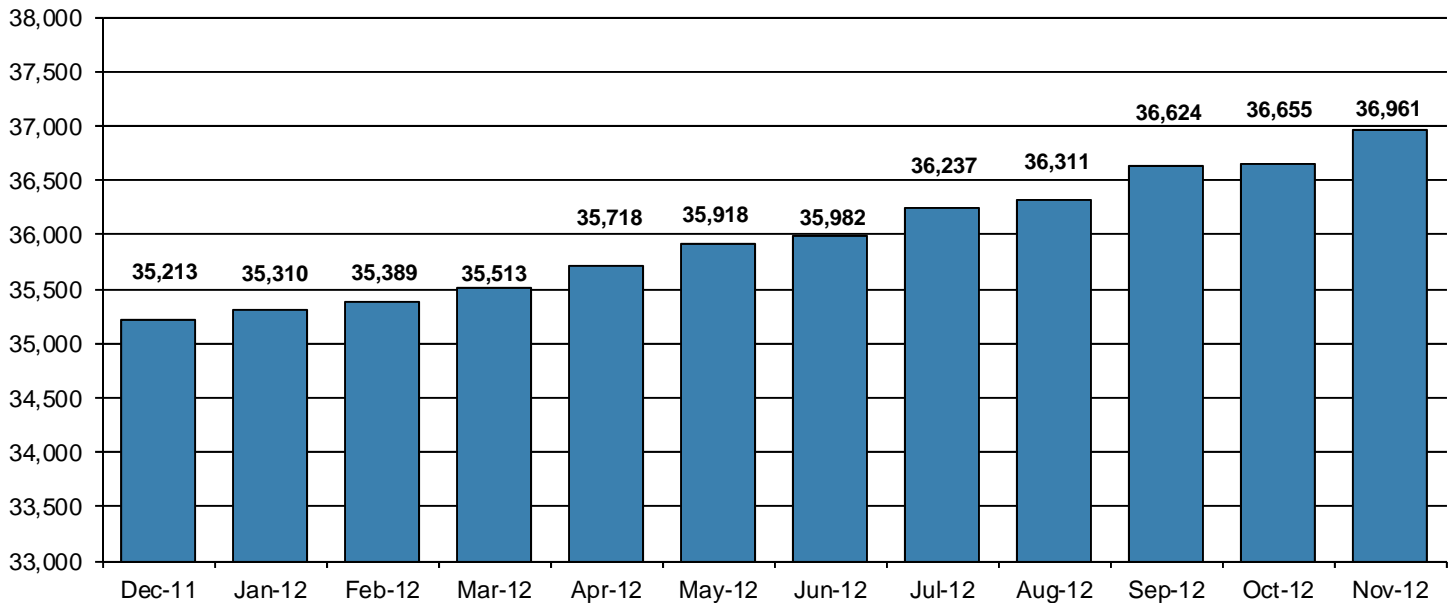
Table 1
WORKLOAD AND POPULATION CHANGES BY REGION / DISTRICT
November 2012

REGION / DISTRICT	Beginning Fiscal Yr ¹ July 2012	Current Month Population	Fiscal YTD Index	Additions	Deletions		Number of Agents ²	Average Workload	Total Workload
					Recommits/ Revocations	Other Deletions			
CHESTER	2,967	3,061	103	95	30	62	39	129	5,023
PHILADELPHIA	9,927	10,285	104	394	103	176	129	126	16,266
EASTERN REGION	12,894	13,346	104	489	133	238	168	127	21,289
ALLENTOWN	4,101	4,241	103	166	68	67	51	145	7,397
HARRISBURG	4,993	5,149	103	202	96	85	64	143	9,163
SCRANTON	1,907	1,967	103	74	31	56	31	117	3,642
WILLIAMSPORT	1,025	1,056	103	38	10	15	16	124	1,984
CENTRAL REGION	12,026	12,413	103	480	205	223	162	137	22,186
ALTOONA	1,453	1,494	103	50	17	21	22	130	2,870
MERCER	3,298	3,245	98	131	42	75	41	147	6,046
ERIE	1,669	1,728	104	86	13	22	25	127	3,166
PITTSBURGH	4,642	4,735	102	213	65	84	71	125	8,861
WESTERN REGION	11,062	11,202	101	480	137	202	159	132	20,944
TOTAL Supervised	35,982	36,961	103	1,449	475	663	489	132	64,420

¹ effective June 30² Filled agent positions

PA Offenders in Other States	3,077	3,183	103	91	12	53
------------------------------	--------------	--------------	------------	-----------	-----------	-----------

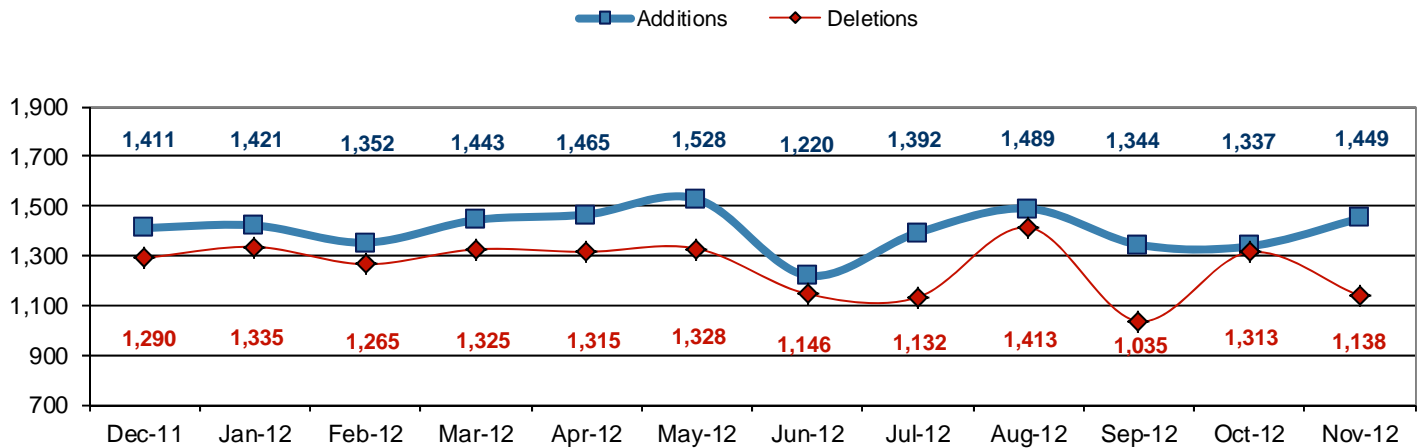
Population - Retrospective Year View



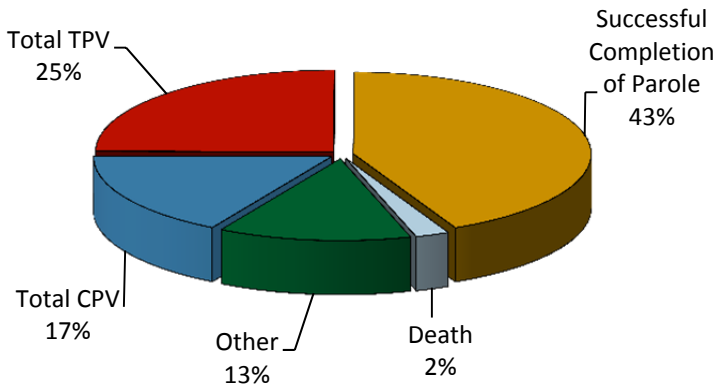
**Table 2
SUPERVISED POPULATION ADDITIONS AND DELETIONS
November 2012**

Population Additions and Deletions	Parole	Reparole	Special County Probation	Special County Parole	Other States' Probation	Other States' Parole	Monthly Total	Fiscal YTD Total
ADDITIONS	890	234	139	64	99	23	1,449	7,011
DELETIONS-RECOMMITMENTS								
<i>Convicted Parole Violator</i>								
State Corrections	124	31	2	0	0	0	157	782
County Corrections	3	1	26	4	0	0	34	170
Other States	0	0	0	0	0	0	0	7
<i>Total Convicted Parole Violator</i>	127	32	28	4	0	0	191	959
<i>Technical Parole Violator</i>								
State Corrections	162	70	2	0	0	0	234	1,217
County Corrections	9	1	24	15	0	0	49	240
Other States	0	0	0	0	1	0	1	7
<i>Total Technical Parole Violator</i>	171	71	26	15	1	0	284	1,464
TOTAL RECOMMITMENTS	298	103	54	19	1	0	475	2,423
Deletion Successful Completion	254	58	100	20	44	12	488	2,639
Deletion Death	13	4	4	1	3	1	26	108
Deletion Other	7		63	9	54	16	149	861
TOTAL DELETIONS	572	165	221	49	102	29	1,138	6,031

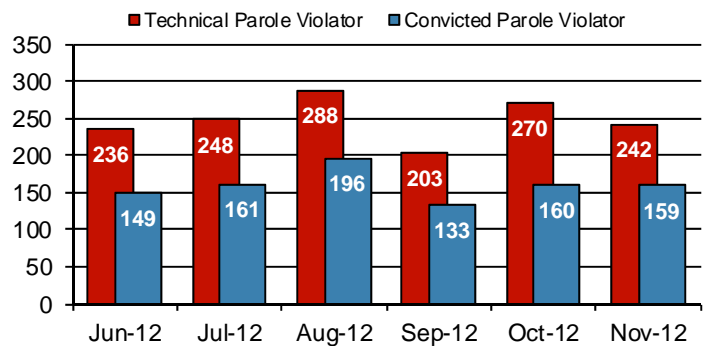
Population Additions & Deletions-Retrospective Year View



Total Deletions November 2012



State Sentence Parole Revocations*

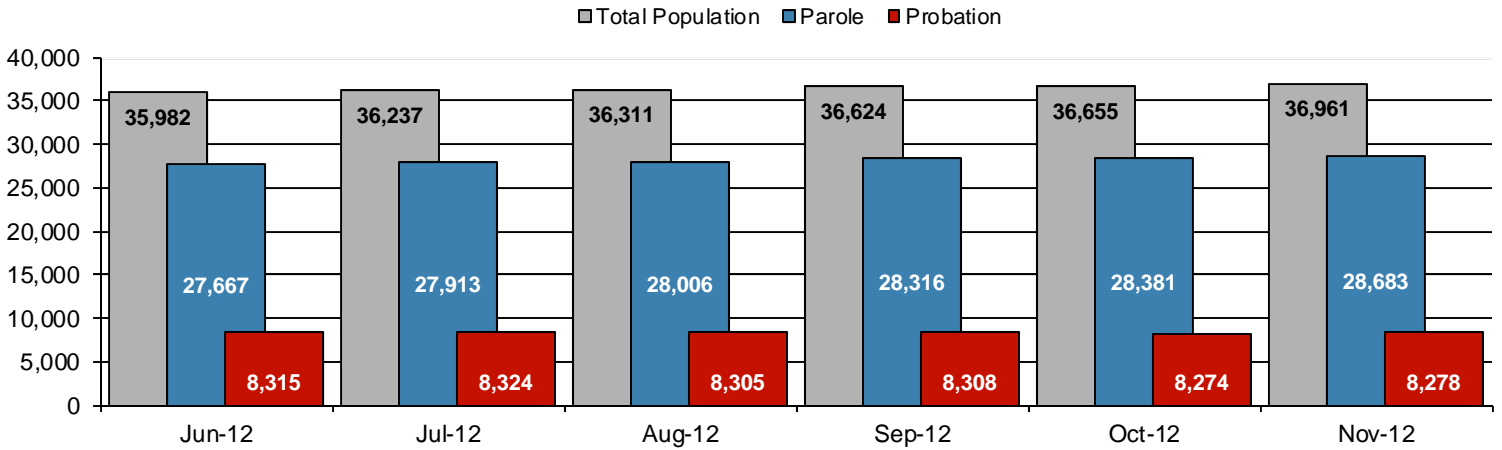


* These revocations represent field case closure records and are dependent on case processing.

**Table 3
SUPERVISED POPULATION BY ORIGINATING JURISDICTION and REGION / DISTRICT
November 2012**

Region / District	PA Parole State Sentence				County		Other States		Total Population
	State Prisons	Boot Camp	County Prisons	Subtotal	Special Probation	Special Parole	Probation	Parole	
Chester	1,796	45	200	2,041	662	17	293	48	3,061
Philadelphia	7,771	141	346	8,258	1,282	13	581	151	10,285
Eastern Region	9,567	186	546	10,299	1,944	30	874	199	13,346
Allentown	2,848	109	336	3,293	477	4	375	92	4,241
Harrisburg	4,050	188	169	4,407	363	4	305	70	5,149
Scranton	1,274	7	182	1,463	215	0	203	86	1,967
Williamsport	745	15	42	802	124	10	97	23	1,056
Central Region	8,917	319	729	9,965	1,179	18	980	271	12,413
Altoona	933	18	67	1,018	295	65	89	27	1,494
Mercer	747	18	43	808	1,436	877	98	26	3,245
Erie	1,120	50	215	1,385	197	52	72	22	1,728
Pittsburgh	3,172	205	107	3,484	866	67	248	70	4,735
Western Region	5,972	291	432	6,695	2,794	1,061	507	145	11,202
Total	24,456	796	1,707	26,959	5,917	1,109	2,361	615	36,961
Percent of Total	66%	2%	5%	73%	16%	3%	6%	2%	100%

Parole and Probation Supervised Populations



Supervised State Sentence Cases

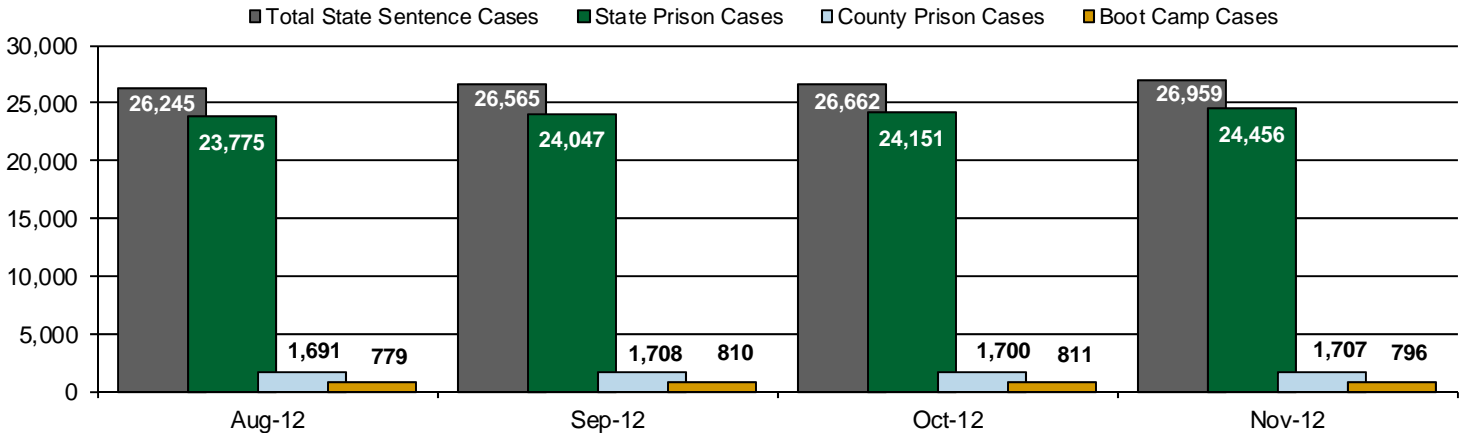
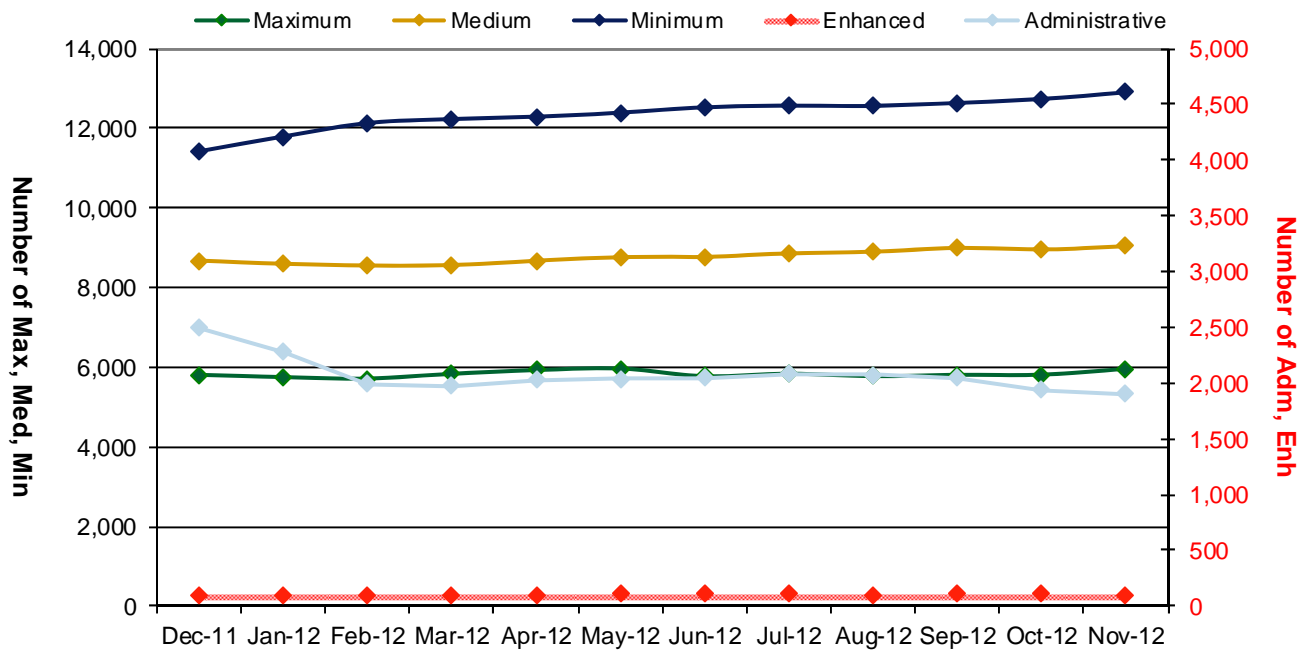


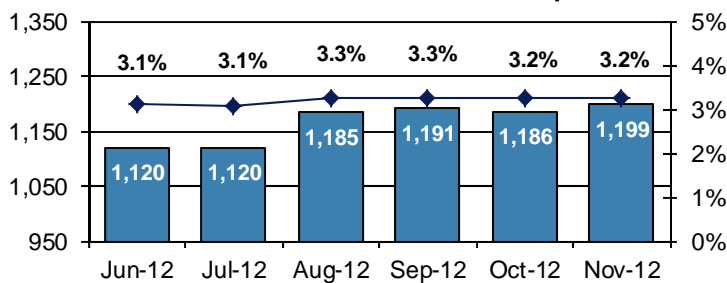
Table 4
SUPERVISED POPULATION BY GRADE OF SUPERVISION and REGION / DISTRICT
November 2012

Region / District	Reporting							Non-Reporting		Total Population
	Enhanced	Maximum	Medium	Minimum	ADM / SPC	Not Classified	Subtotal	Absconder	Detainees	
Chester	5	287	705	1,270	289	14	2,570	54	437	3,061
Philadelphia	1	1,486	2,073	4,000	331	56	7,947	420	1,918	10,285
Eastern Region	6	1,773	2,778	5,270	620	70	10,517	474	2,355	13,346
Allentown	18	800	1,063	1,491	107	22	3,501	159	581	4,241
Harrisburg	17	958	1,157	1,600	348	20	4,100	215	834	5,149
Scranton	8	290	496	680	127	0	1,601	48	318	1,967
Williamsport	2	126	309	356	108	4	905	22	129	1,056
Central Region	45	2,174	3,025	4,127	690	46	10,107	444	1,862	12,413
Altoona	2	235	467	478	78	1	1,261	15	218	1,494
Mercer	1	265	907	1,376	304	5	2,858	57	330	3,245
Erie	7	359	437	553	144	7	1,507	57	164	1,728
Pittsburgh	43	1,151	1,423	1,096	65	2	3,780	152	803	4,735
Western Region	53	2,010	3,234	3,503	591	15	9,406	281	1,515	11,202
Total	104	5,957	9,037	12,900	1,901	131	30,030	1,199	5,732	36,961
Percent of Total	<1%	16%	24%	35%	5%	<1%	81%	3%	16%	100%

PBPP Active Cases By Supervision Level



Number of Absconders and % of Population



Number of Detainees and % of Population

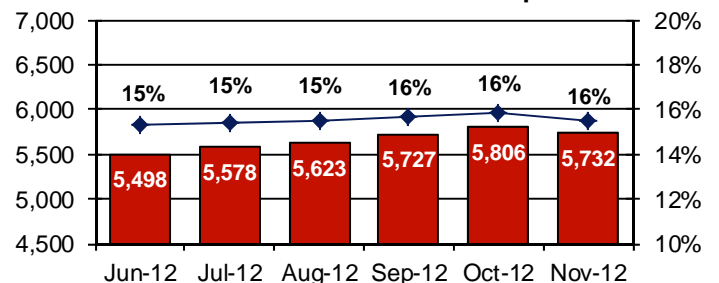


Table 5
SUPERVISED POPULATION BY GENDER, RACE and REGION / DISTRICT
November 2012

Region / District	Male					Female					% Male	Total Population
	White	Black	Hispanic	Other ¹	Total	White	Black	Hispanic	Other ¹	Total		
Chester	1,260	1,373	124	33	2,790	185	72	9	5	271	91%	3,061
Philadelphia	1,291	6,899	1,264	153	9,607	184	423	60	11	678	93%	10,285
EASTERN REGION	2,551	8,272	1,388	186	12,397	369	495	69	16	949	93%	13,346
Allentown	1,903	881	998	34	3,816	274	80	66	5	425	90%	4,241
Harrisburg	2,289	1,670	578	39	4,576	396	121	48	8	573	89%	5,149
Scranton	1,211	383	109	14	1,717	212	25	10	3	250	87%	1,967
Williamsport	744	91	11	3	849	176	23	7	1	207	80%	1,056
CENTRAL REGION	6,147	3,025	1,696	90	10,958	1,058	249	131	17	1,455	88%	12,413
Altoona	1,072	140	6	10	1,228	252	12	0	2	266	82%	1,494
Mercer	2,146	374	11	8	2,539	625	76	1	4	706	78%	3,245
Erie	1,022	406	50	9	1,487	186	46	6	3	241	86%	1,728
Pittsburgh	1,994	2,138	51	19	4,202	365	159	2	7	533	89%	4,735
WESTERN REGION	6,234	3,058	118	46	9,456	1,428	293	9	16	1,746	84%	11,202
TOTAL	14,932	14,355	3,202	322	32,811	2,855	1,037	209	49	4,150	89%	36,961

¹ "Other" includes Asian, Pacific Islander, Native American, Native Alaskan, and cases not elsewhere classified.

Table 6
SUPERVISED POPULATION BY EMPLOYMENT STATUS and REGION / DISTRICT
November 2012

Region / District	In Labor Force				Not In Labor Force					Total Population
	Employed Part Time	Employed Full Time	Unemployed	Employment Rate	Unable to Work ²	Student	Unearned Income ³	Unknown	Non-Reporting	
Chester	158	1,201	804	63%	283	34	88	2	491	3,061
Philadelphia	598	2,421	3,538	46%	791	136	463	0	2,338	10,285
EASTERN REGION	756	3,622	4,342	50%	1,074	170	551	2	2,829	13,346
Allentown	294	1,587	679	73%	556	63	322	0	740	4,241
Harrisburg	218	1,738	1,659	54%	295	32	157	1	1,049	5,149
Scranton	47	945	307	76%	112	14	176	0	366	1,967
Williamsport	88	470	162	78%	91	12	81	1	151	1,056
CENTRAL REGION	647	4,740	2,807	66%	1,054	121	736	2	2,306	12,413
Altoona	136	476	367	63%	110	20	152	0	233	1,494
Mercer	294	1,008	820	61%	365	47	323	1	387	3,245
Erie	111	564	451	60%	187	26	167	1	221	1,728
Pittsburgh	256	1,598	913	67%	669	57	285	2	955	4,735
WESTERN REGION	797	3,646	2,551	64%	1,331	150	927	4	1,796	11,202
TOTAL	2,200	12,008	9,700	59%	3,459	441	2,214	8	6,931	36,961

² Offender is unable to work due to a physical or mental disability, is a care provider, attends inpatient treatment, etc.

³ Offender collects income assistance, workman's compensation, monthly pension, Social Security, disability payments, etc.

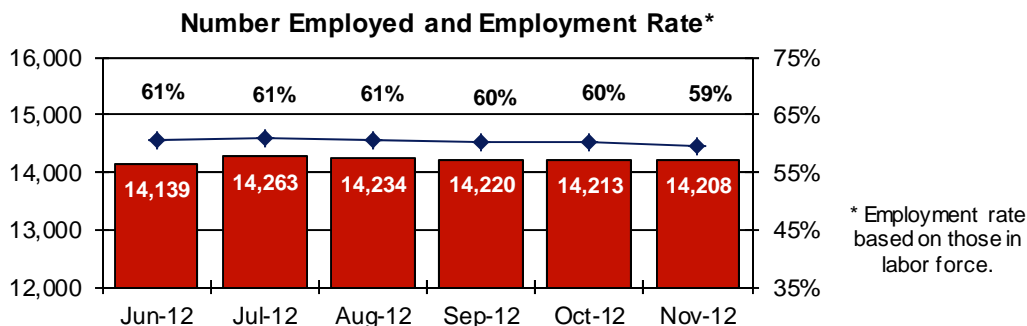
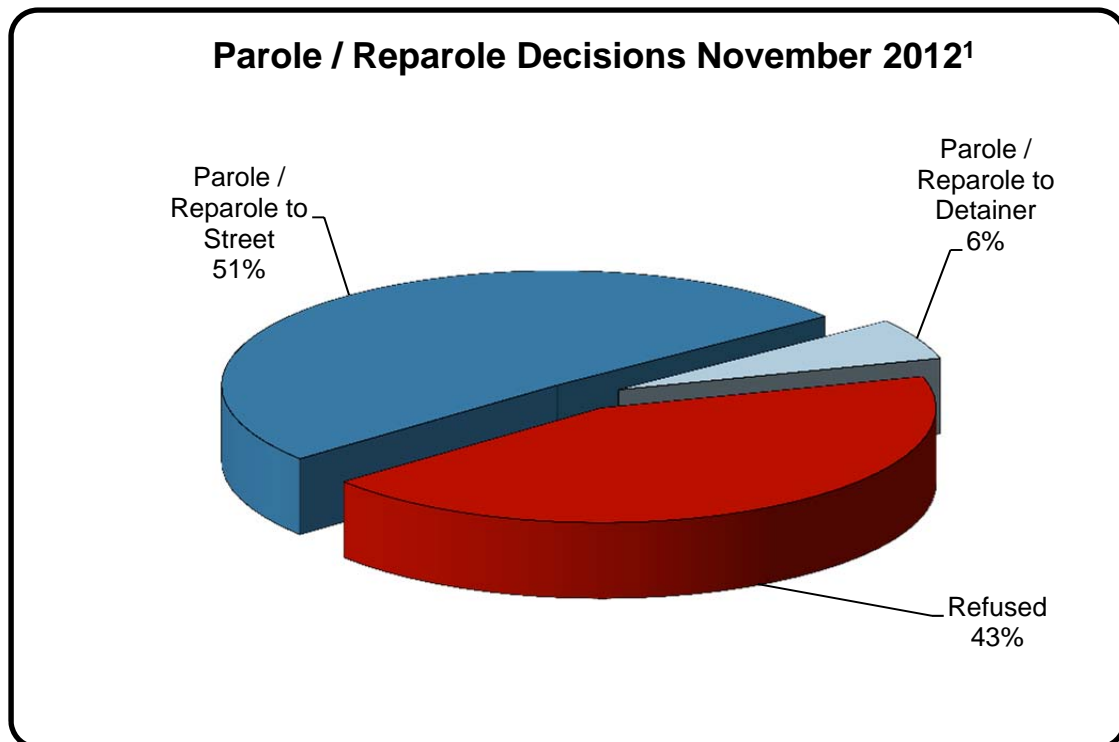


Table 7
BOARD DECISIONS
November 2012

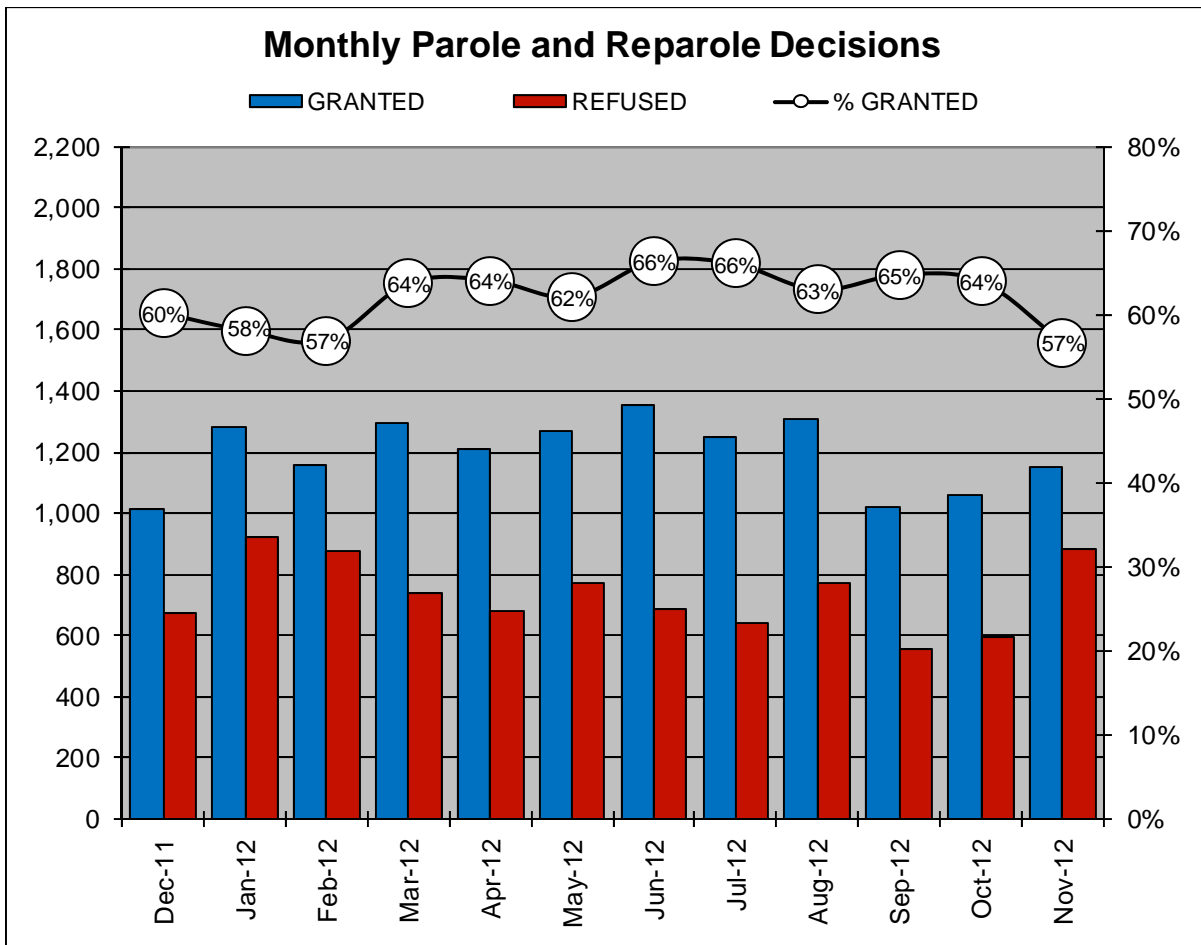
Type of Decision		Total
Parole / Reparole to Street	1,034	
Parole / Reparole to Detainer	118	
Refused	881	
Total Considered		2,033
<hr/>		
Recommitments as TPV	337	
Recommitments as CPV	123	
Recommitments as CPV and TPV	22	
Total Recommitments		482
Refer to Prior Action		62
Other Decisions		739
Total Decisions		3,316



¹ The 57% does not necessarily reflect the overall grant rate, but rather is the calculated percent of grant decisions for the total number of Board Actions produced during this period of time.

Table 8
MONTHLY PAROLE and REPAROLE DECISIONS
November 2012

MONTH-YEAR	GRANTED	REFUSED	CONSIDERED	% GRANTED
Dec-11	1,015	671	1,686	60%
Jan-12	1,282	925	2,207	58%
Feb-12	1,156	874	2,030	57%
Mar-12	1,296	736	2,032	64%
Apr-12	1,212	679	1,891	64%
May-12	1,266	774	2,040	62%
Jun-12	1,353	686	2,039	66%
Jul-12	1,250	643	1,893	66%
Aug-12	1,309	771	2,080	63%
Sep-12	1,022	557	1,579	65%
Oct-12	1,059	596	1,655	64%
Nov-12	1,152	881	2,033	57%
Monthly Average Over 12 Months	1,198	733	1,930	62%

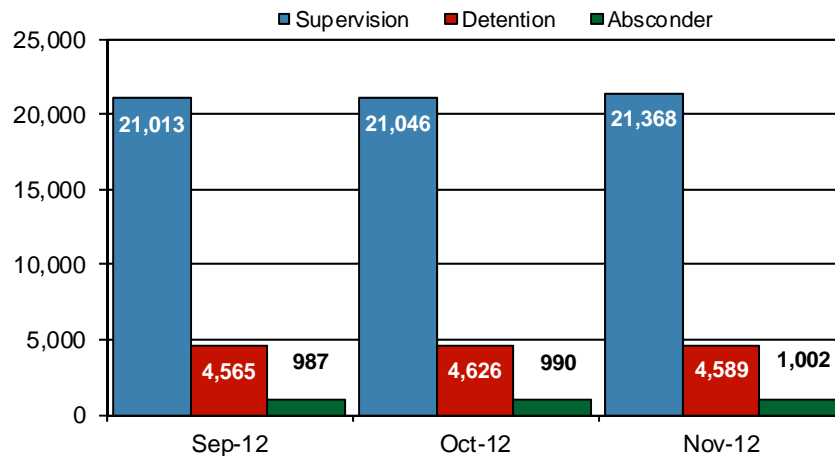


PBPP Population Breakdown By Place of Incarceration/Jurisdiction – November 2012

Offender Status - November 2012					
Status	State Prison	County Prison	County Sentence	Other States' Cases	Total
Supervision	19,994	1,374	5,832	2,830	30,030
Absconder	956	46	197	0	1,199
Detention	4,302	287	997	146	5,732
Total	25,252	1,707	7,026	2,976	36,961

PBPP Monthly Population Profile						
Offender Status	Jun-12	Jul-12	Aug-12	Sep-12	Oct-12	Nov-12
State sentence from state institution	24,219	24,457	24,554	24,857	24,962	25,252
Supervision	19,198	19,391	19,411	19,622	19,662	19,994
Absconder	888	889	943	937	940	956
Detention	4,133	4,177	4,200	4,298	4,360	4,302
State sentence from county prison	1,675	1,676	1,691	1,708	1,700	1,707
Supervision	1,367	1,369	1,381	1,391	1,384	1,374
Absconder	44	48	45	50	50	46
Detention	264	259	265	267	266	287
County sentence Prob & Parole	7,058	7,086	7,044	7,035	7,010	7,026
Supervision	5,906	5,900	5,840	5,815	5,778	5,832
Absconder	187	182	196	204	196	197
Detention	965	1,004	1,008	1,016	1,036	997
Other states' sentence Prob & Parole	3,030	3,018	3,022	3,024	2,983	2,976
Supervision	2,893	2,879	2,871	2,878	2,839	2,830
Absconder	1	1	1	0	0	0
Detention	136	138	150	146	144	146
PBPP Population end of month	35,982	36,237	36,311	36,624	36,655	36,961

State Sentence Cases by Offender Status



PBPP Population Breakdown By Place of Incarceration/Jurisdiction – November 2012

Monthly Count of Grant and Refuse Board Actions							
Type of Decision	County Prison			State Prison			All Grant/Refuse Board Actions
	Grant	Refuse	Total	Grant	Refuse	Total	
December 2011	42	12	54	973	659	1,632	1,686
January 2012	45	42	87	1,237	883	2,120	2,207
February 2012	47	15	62	1,109	859	1,968	2,030
March 2012	43	22	65	1,253	714	1,967	2,032
April 2012	43	13	56	1,169	666	1,835	1,891
May 2012	35	20	55	1,231	754	1,985	2,040
June 2012	44	21	65	1,309	665	1,974	2,039
July 2012	37	13	50	1,213	630	1,843	1,893
August 2012	41	14	55	1,268	757	2,025	2,080
September 2012	24	10	34	998	547	1,545	1,579
October 2012	20	10	30	1,039	586	1,625	1,655
November 2012	30	10	40	1,122	871	1,993	2,033
2012 Total	409	190	599	12,948	7,932	20,880	21,479

Additions and Deletions						
	Jun-12	Jul-12	Aug-12	Sep-12	Oct-12	Nov-12
Total Additions	1,220	1,392	1,489	1,344	1,337	1,449
State sentence - State Prison	842	1,001	1,067	961	960	1,059
State sentence - County Prison	68	49	73	50	41	65
County sentence Prob & Parole	171	207	198	199	206	203
Other states' sentence	139	135	151	134	130	122
Total Deletions	1,146	1,132	1,413	1,035	1,313	1,138
State sentence - State Prison	687	682	874	592	763	692
<i>Technical Violator</i>	230	235	274	196	261	232
<i>Convicted Violator</i>	138	151	190	123	153	155
<i>Successful Completion</i>	292	266	375	250	332	281
<i>Other Case Closure</i>	27	30	35	23	17	24
State sentence - County Prison	53	46	54	42	56	45
<i>Technical Violator</i>	6	13	14	7	9	10
<i>Convicted Violator</i>	11	10	6	10	7	4
<i>Successful Completion</i>	34	21	32	22	39	31
<i>Other Case Closure</i>	2	2	2	3	1	0
County sentence Prob & Parole	256	256	340	273	323	270
<i>Technical Violator</i>	41	31	46	38	49	41
<i>Convicted Violator</i>	28	17	34	30	30	32
<i>Successful Completion</i>	113	131	172	125	159	120
<i>Other Case Closure</i>	74	77	88	80	85	77
Other states' sentence	150	148	145	128	171	131
<i>Technical Violator</i>	3	1	1	2	3	1
<i>Convicted Violator</i>	1	2	1	0	4	0
<i>Successful Completion</i>	57	65	46	53	63	56
<i>Other Case Closure</i>	89	80	97	73	101	74
PBPP Population end of month	35,982	36,237	36,311	36,624	36,655	36,961